



USER'S GUIDE

Digital Cutting Plotter Edge 12 / Edge 15X





READ THESE IMPORTANT SAFETY INSTRUCTIONS

THIS DEVICE IS INTENDED FOR HOUSEHOLD USE ONLY

This appliance is not intended for use by persons (including children) with reduced physical, sensory or mental capabilities, or lack of experience and knowledge, unless they have been given supervision or instruction concerning use of the appliance by a person responsible for their safety.

Children should be supervised to ensure that they do not play with the appliance.

WARNING



To reduce the risk of fire, electrical shock or personal injury, it is important that you read and understand all the instructions and warnings that come with your Digital Cutter Edge 12/15 ("Product").

ELECTRICAL SHOCK HAZARD



Product is an electrical device. Use with caution. Observe the following precautions:

- Do not operate Product on wet surfaces or near any water sources (tub, shower, sink, etc.).
- Keep liquids and beverages away from Product.
- Unplug Product from outlet when not in use or before cleaning.
- Unplug Product when removing or installing blades or blade holder.

PINCH HAZARD



Cutting Carriage can pinch fingers or hand. Feed Rollers can catch hair or clothing.

- Keep fingers away from moving parts.
- Keep hair and clothing away from moving parts.

CUTTING HAZARD

Cutting Blades are sharp. Handle with care.

- Keep fingers away from exposed blade.



Keep away from children

- Choking hazard. Small parts.

This Product has a Class 1 laser and complies with International Standards EN 60825-1; a Class 1 laser product is safe under reasonably foreseeable conditions of operation. Use of controls or adjustments or performance of procedures other than those specified herein may result in hazardous radiation exposure.

GENERAL RULES

- Do not disassemble the device.
- Do not shine laser on a reflective surface.
- Do dispose of product in accordance with local laws and regulations of your region.
- Do not look directly at the laser at any time.
- Always operate product on a dry, clean and level surface.
- Do not operate product with wet hands.
- Keep area of operation well lit.
- Do not operate product near flammable liquids or gases.
- Do not operate product outside.
- Do not unplug product by tugging or pulling the power cord.
- Do not touch the mat, blade holder or rollers while the product is in operation.

FCC Part 15 compliance

- This device complies with Part 15 of the FCC Rules. Operation is subject to the following two conditions: (1) this device may not cause harmful interference, and (2) this device must accept any interference received, including interference that may cause undesired operation.

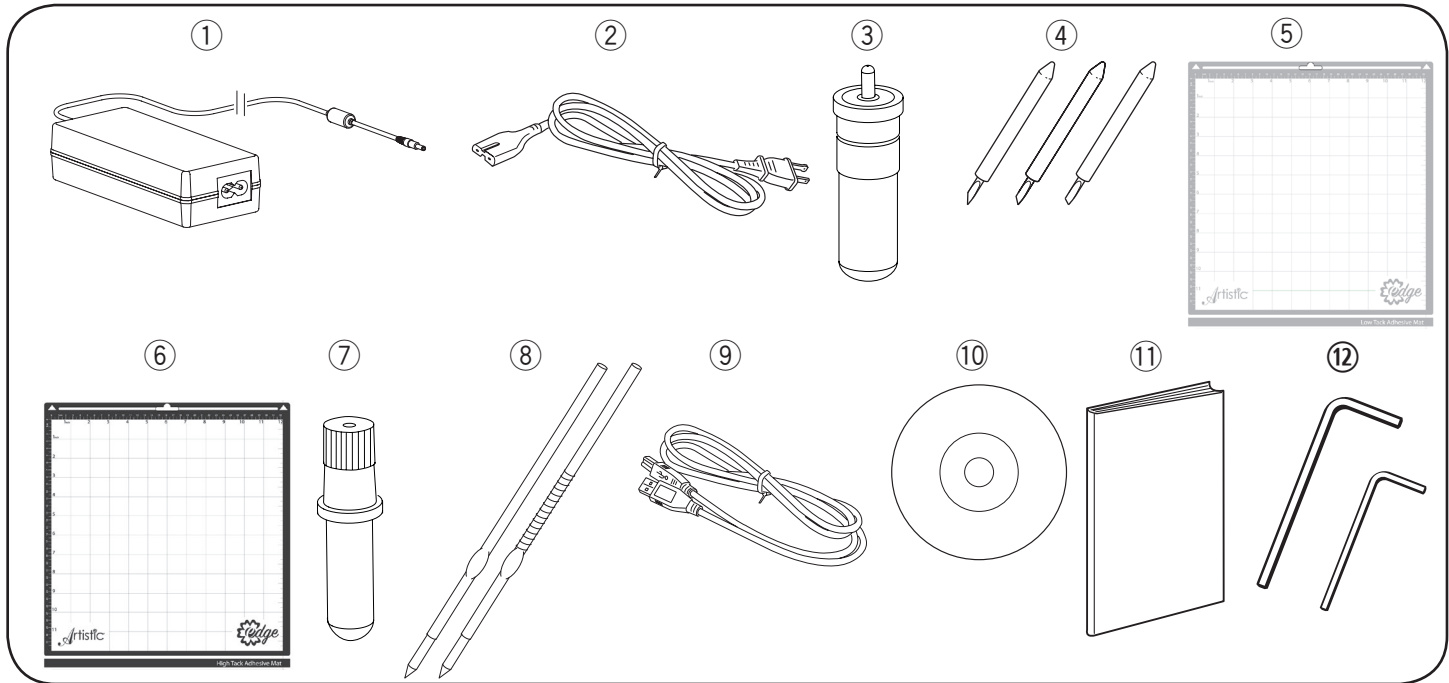
Unlawful Use of Scanning Equipment notice

It is an offense to make reproductions of certain items or documents with the intent to commit fraud. The following is a non-exhaustive list of documents which may be unlawful to produce copies of. We suggest you check with legal counsel if in doubt about any particular item or document.

- Currency
- Bonds
- Certificates of Deposit
- Armed forces service papers
- Passports
- Postage Stamps
- Immigration papers

SAVE THESE INSTRUCTIONS AND WARNINGS and keep them near your Artistic Edge Digital Cutter.

Standard Accessories



- ① Universal power supply
- ② Power cord
- ③ Blade holder
- ④ Blades
 - Blue Cap Blades for cutting thicker materials
 - Red Cap Blades for cutting thin materials
 - Yellow Cap Blades for cutting fabrics
- ⑤ 12"x12" (or 15"x15") low tack adhesive cutting mat
- ⑥ 12"x12" (or 15"x15") high tack adhesive cutting mat
- ⑦ Pen Holder
- ⑧ Pens
- ⑨ USB 2.0 cable
- ⑩ Artistic SimpleCut Installation Disc
- ⑪ Owner's manual with Artistic SimpleCut activation code
- ⑫ One large hexagonal screwdriver, one small hexagonal screw driver

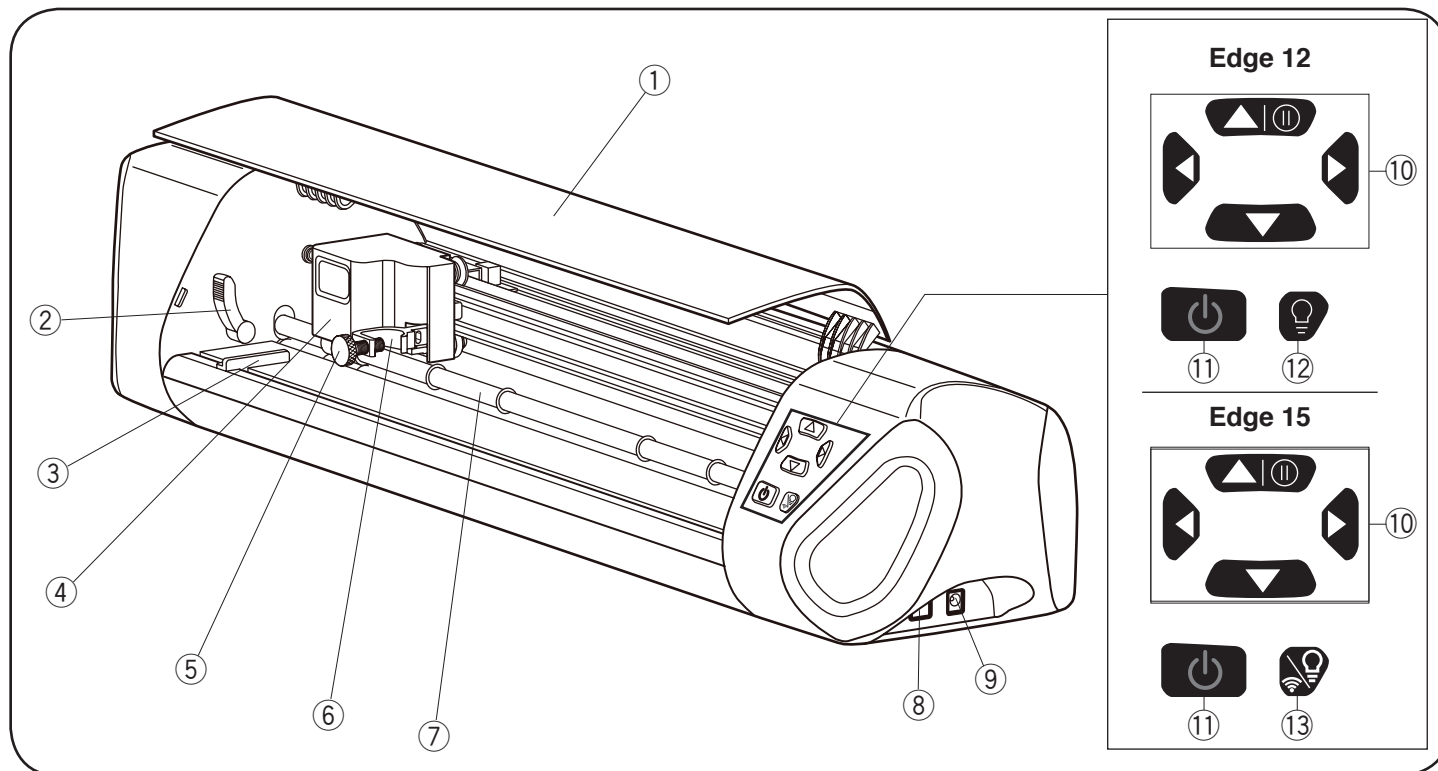
SimpleCut Software Installation Instructions

1. Insert the Artistic SimpleCut Installation DVD into your DVD-ROM drive*. On most computers you will have a AUTORUN screen pop up next. If your computer does not have the DVD-ROM AUTORUN feature activated, open Windows Explorer, then open the DVD-ROM folder and run the "setup.exe" program.
2. The Welcome screen informs you that you are about to install Creative DRAWings SimpleCut Software. Click "Next" to continue.
3. When the window with the License Agreement opens: Click on the first radio button of the window, confirming that you accept the terms of the license agreement. Then click "Next" to continue.
4. On the next window, select the installation type: If you choose "Complete" (recommended), all program features will be installed. If you choose "Custom", you have to specify which features of the program you want to install. Click "Install" after you have made your decision. At this point the installer will try to install the Cutter driver files. On the pop-up window that will appear, press "Install this driver anyway" in order to install. You may also be prompted to install the drivers for Janome MC12000 or MC15000. Click "install" to proceed.
5. Once the installation is finished, the Activation Form will appear. Fill in the requested information together with the Activation Key (found below these instructions).
6. Once you have filled this out, click the Activate Product button.
7. In order to activate Creative DRAWings SimpleCut, click on the "Activate now" button. You must be connected to the Internet.
8. Once the activation procedure is finished, the "Activation Successful" message will appear. If the Activation Key number was wrong, or you are not connected to the Internet, you will receive an Activation Failure message. Check your Activation Key and your internet connection and try again. Once successfully activated, click on the "Close" button to close the dialog box.
9. When the Activation process finishes the installation of My Editor v5.0 will start automatically. Click "Next" to continue.
10. The window with the License Agreement opens: click on the first radio button of the window, confirming that you accept the terms of the License Agreement. Then click "Next" to continue.
11. In the next dialog box, enter the user name and the organization, if any, and click "Next".
12. The Destination Folder dialog box will appear. Press "Next" to continue using the default destination, or specify another location.
13. In the next window, select the installation type. If you choose "complete" (recommended), all program features will be installed. If you choose Custom, you will need to specify which features you want to install. Click "Install" after you have made your decision.
14. The next dialog box asks you to select what files you want My Editor to handle. You can choose any selection that you want, but it is recommended that you use the first option: "my editor v5.00 will handle only ngs, and mls".
15. You are now ready to install. Click "Install" to begin. Once the installation finishes, click on "Finish".
16. The next dialog box informs you that the Creative DRAWings SimpleCut was installed successfully. Click on the "Finish" button to finish the installation process.
17. If an additional installation wizard starts to install DirectX9C, you MUST allow it to install or the software will not work properly. Follow on-screen prompts to install.

– Verification code –

*If your PC does not have a DVD-ROM drive or if you have lost your Installation Disc, you can download the software at - <http://www.artisticcreativeproducts.com/software/edge-simplecut-download>

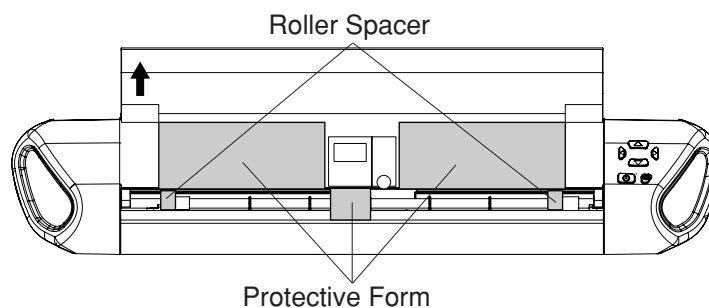
Names of parts



- ① Front cover
- ② Roller lifter (Located on the other side as well.)
- ③ Cutting mat guide (Located on the other side as well.)
- ④ Carriage
- ⑤ Clamp screw
- ⑥ Tool cradle
- ⑦ Feed roller
- ⑧ USB port
- ⑨ Power inlet
- ⑩ Jog buttons - Upper button is also the pause button
- ⑪ Power button
- ⑫ Light button (for Edge 12)
- ⑬ Light/wireless button (for Edge 15X)

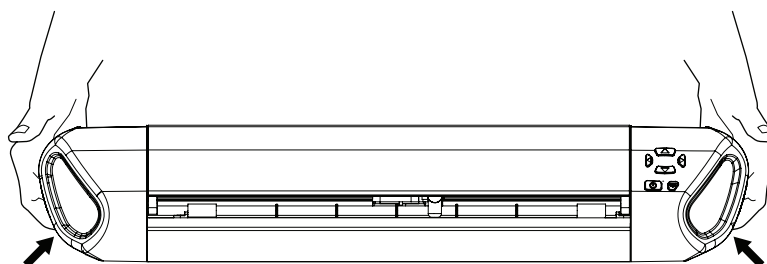
Before turning on the Edge 12/15X

When using the machine for the first time, remove the protective forms and roller spacers from the machine.

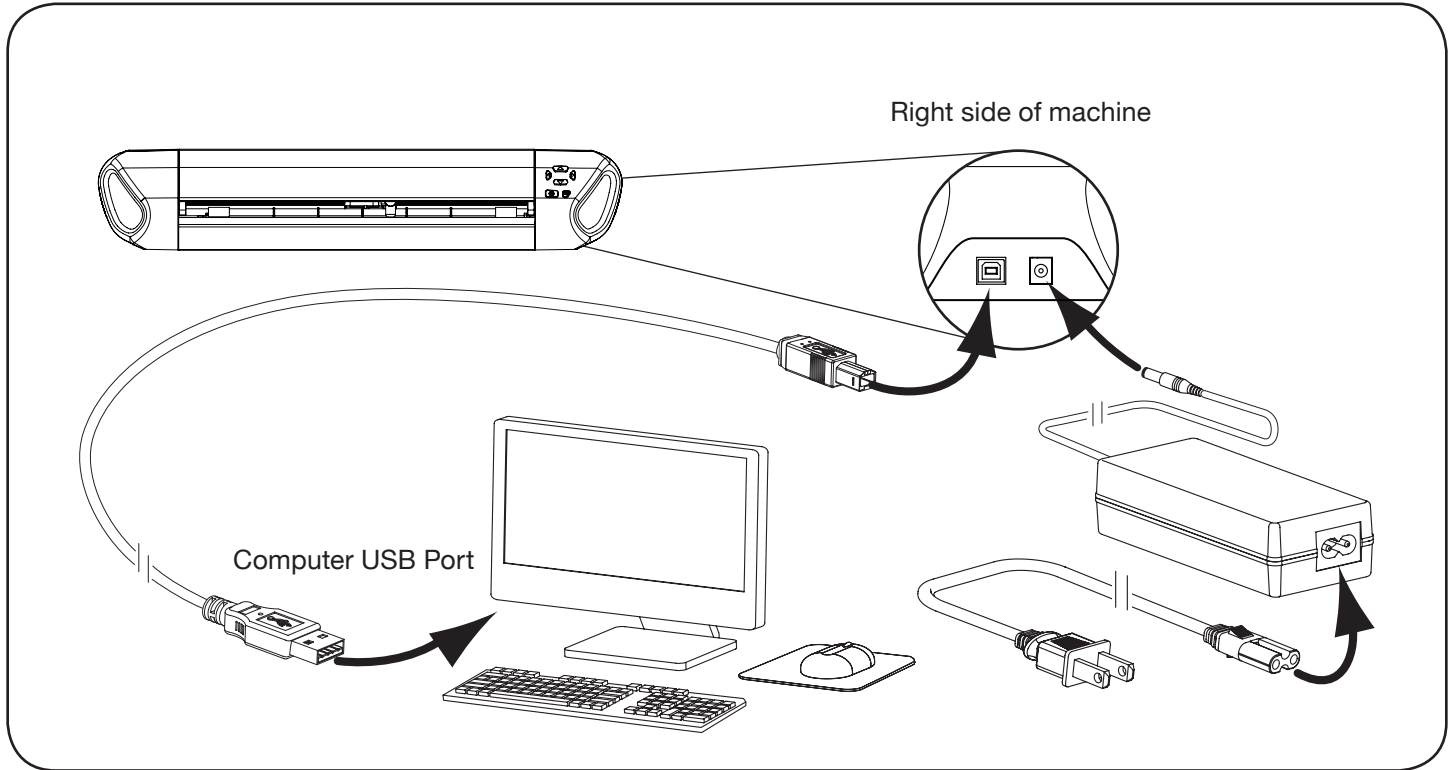


Carrying the Edge 12/15X

Carrying handles (holes) are located on the lower part of the both sides of the machine. Hold the carrying handles when transporting the machine as illustrated.



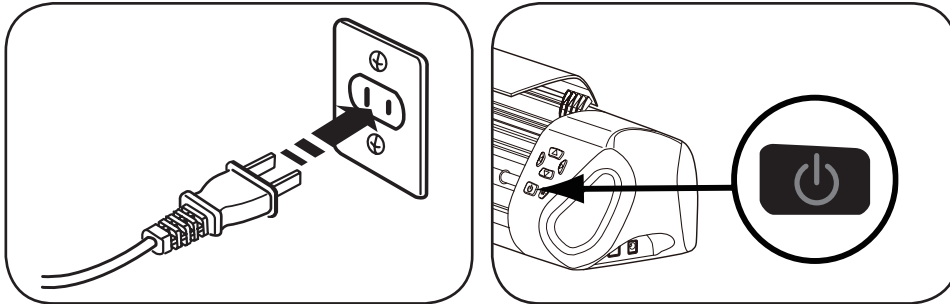
Connecting the machine



1. Plug the power cord into the universal power supply.
2. Plug the universal power supply into the power inlet (right side of the Edge machine).
3. Plug the small end of the USB cable into the side of the Edge machine.
4. Plug flat end of the USB cable into a USB port on your computer.

Starting the machine

NOTICE DO NOT unplug USB cable from computer while Machine is in use. This will cause loss of data.



1. Plug the power supply plug into the wall outlet.
2. Press the power button on the front of the machine.

Machine light

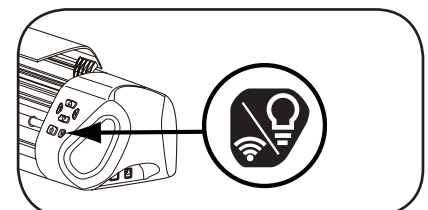
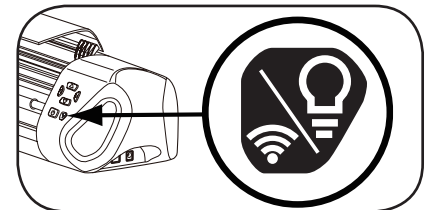
1. Push Light or light/wireless button to turn the light on. Push the button again to turn the light off.

Connecting Edge to wireless network (for Edge 15X only)

1. Push and hold down light/wireless button for three seconds. The button will light up once the wireless function is activated.

Edge wireless ID can be found on the bottom of the Edge digital cutter.

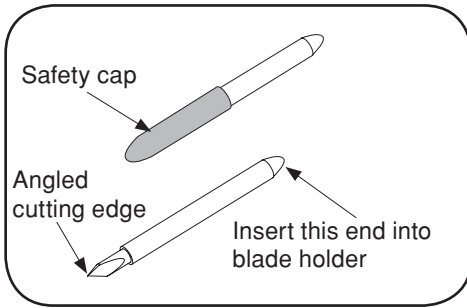
For more details to set up the wireless function, see page 11.



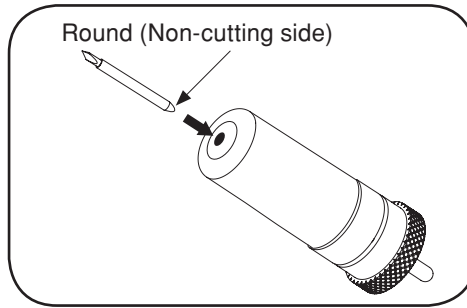
Inserting the blade into the blade holder



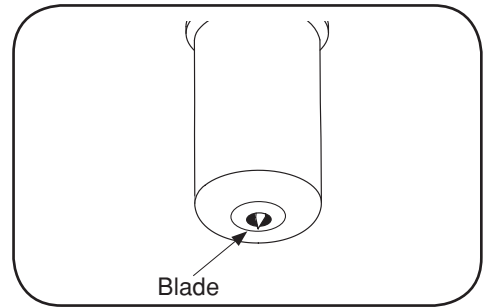
CAUTION: CUTTING HAZARD Blade is sharp, handle with care.



1. Remove the safety cap from the blade, being very careful with the sharp edge.



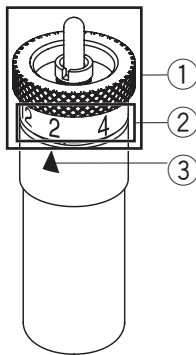
2. Carefully insert the round (non-cutting side) of the blade into the hole of the blade holder. The blade will be held in place by a magnet so that it will not fall out.



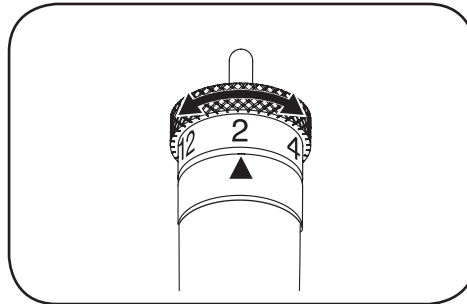
3. The blade will be just barely exposed from the bottom of the blade holder.

Setting the blade depth

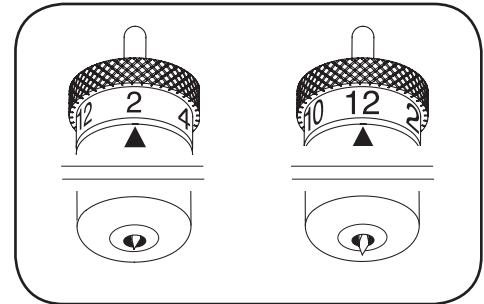
NOTICE DO NOT adjust blade depth while Machine is operating.



- ① Blade holder cap
- ② Blade depth numbers
- ③ Arrow



1. To set the blade depth, you will spin the blade holder cap. Printed on a ring around the cap are blade depth numbers ranging from 2-12 and an arrow on the blade holder beneath it. Line the arrow up with the numbered setting for different blade depths.



2. The higher the number you select, the further out the blade protrudes. The lower the number you select, less of the blade is exposed.

**Lower number for thinner material
Higher number for thicker material**

Thicker materials like heavy cardstock and template material will need more of the blade to cut through and therefore a higher number needs to be selected. Thinner materials like vinyl only need a small amount of the blade to be exposed to make the cut, therefore a lower number will be optimal.

For best results, always try a test cut first so that you can make adjustments.

Fine tuning blade height on blade holder

For extra precision while cutting, you may want to fine tune your blade holder. Use a hexagonal screwdriver to adjust the screws in three positions.

① Bottom Screw

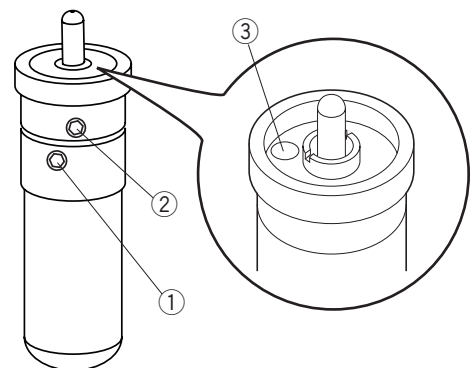
The lower screw on the blade holder will prevent the cap from turning. Once you have selected your blade height, tighten this screw using included large hexagonal screwdriver to ensure it will not move out.

② Middle screw

Loosening the screw in the middle will push the blade further up in the blade holder. This will allow you to achieve a blade height of less than 2.

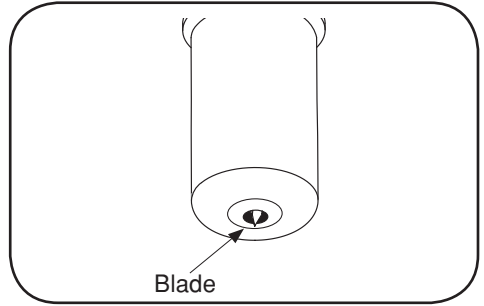
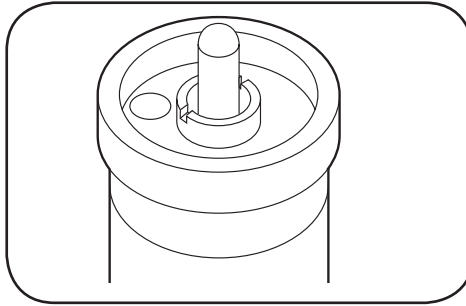
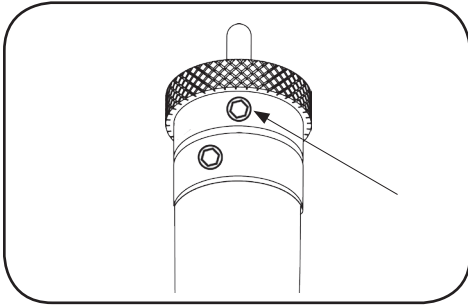
③ Top Screw

Once this screw is tightened, the blade holder cap will only be able to make one rotation around. It acts like a stopper to prevent the blade coming out too far or too little.



Blade Holder Calibration

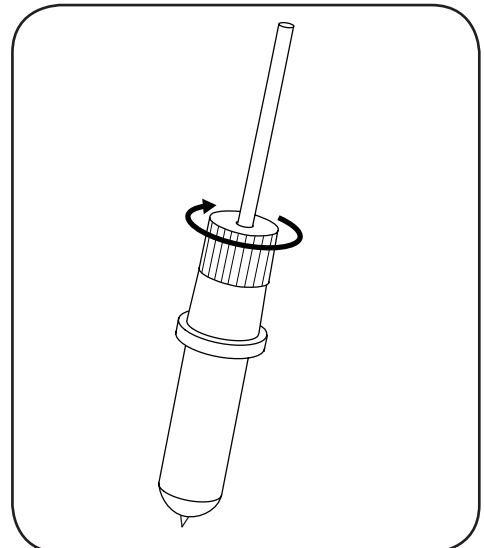
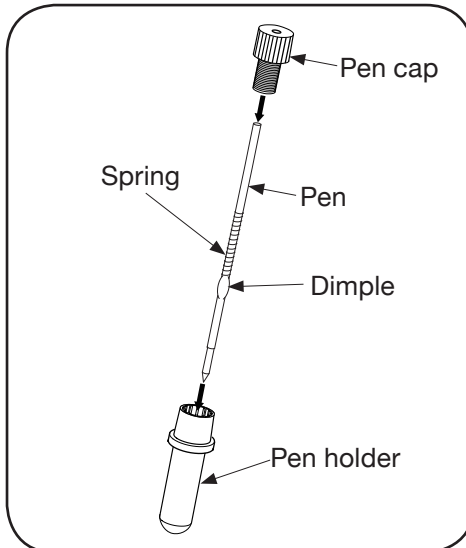
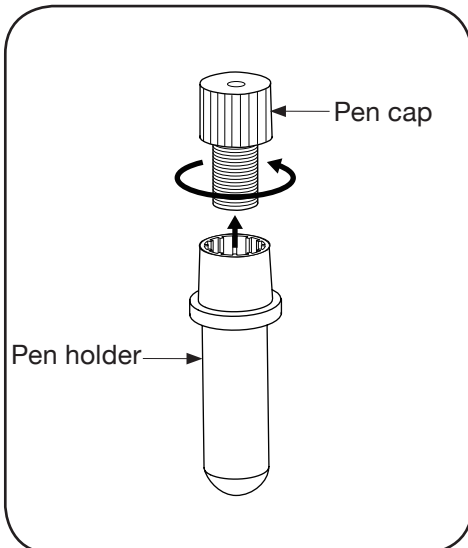
To ensure that your blade holder is calibrated correctly with the presets from the software, you may have to make some adjustments.



1. Remove the blade from the blade holder to prevent injury. The Middle Screw is on the same ring as the number settings. To make adjustments in the blade depth, loosen the Middle Screw by turning counterclockwise using the smaller hexagonal screwdriver.
2. A.) Use a set of needle-nose pliers to grab the nut around the Blade Release Button. Turn the dial clockwise while keeping the Blade Holder Cap from rotating. B.) A flathead screwdriver can also be used to depress the Blade Release Button until the screwdriver sits within the grooves of the dial at the base of the button.
3. To check that the blade depth is adjusted correctly, turn the Blade Insert the Red Cap blade into the blade holder. Holder Cap to align the arrow with the number 2 setting. At this setting, the blade should protrude from the base of the Blade Holder, approximately the thickness of a sheet of paper. Test the setting by inserting a blade into the holder and with your hand, swipe the base of the blade holder on top of two pieces of scrap paper. Only the top layer should be cut.

When the Adjustments are complete, tighten the Middle Screw by turning clockwise.

Inserting the pen into the pen holder



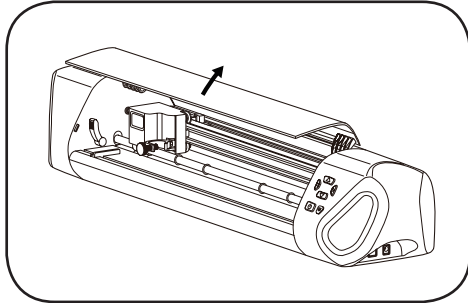
1. Screw the pen cap off from the pen holder.
2. Insert the pen into the pen holder, with the writing end facing down. Then insert the spring on the pen, sitting on the dimple.
3. Put the pen cap on top, letting the pen out the hole in the back. Screw down and tighten. Remove the wax protector on the end of the pen.

Installing the blade or pen holder

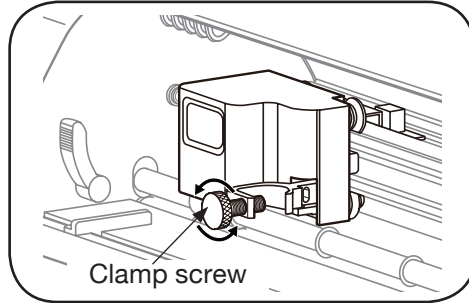
! WARNING: MOVING PARTS: Keep fingers, hair and clothing away.

⚡ CAUTION: Always unplug Machine before removing or installing Blade Holder.

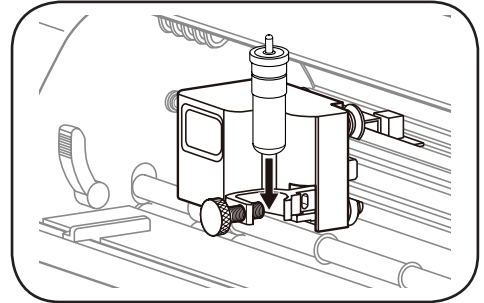
⚠ CAUTION: CUTTING HAZARD Keep fingers away from exposed blade.



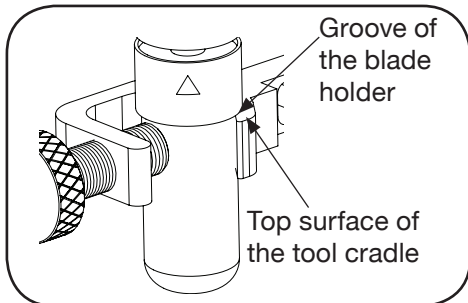
1. Open the front cover by lifting it up to expose the carriage and rollers.



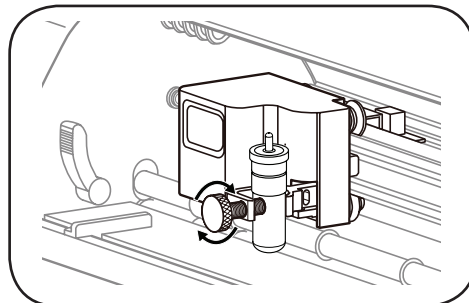
2. On the front cover of the carriage is a tool cradle for the blade/pen holder. Loosen the tool cradle by turning the clamp screw counterclockwise.



3. Place the blade/pen holder into the tool cradle. The blade depth arrow should be facing out if you are using the blade holder.



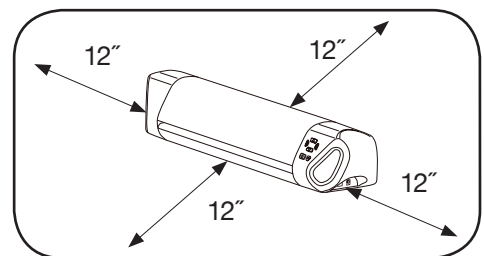
4. Be sure that the groove of the blade/pen holder is touching to the top surface of the tool cradle.



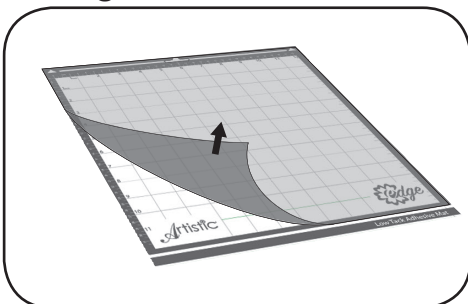
5. Tighten the clamp screw until the blade/pen holder is secure.

Workspace

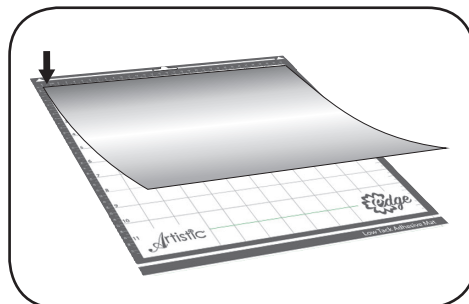
Keep your Edge machine on a clean, dry and stable surface. Make sure that your Edge machine is 12" away from the end of your work surface around all sides. If you are using a mat larger than 12", make sure that you have enough space behind the machine for it to feed out. (Machine shown). Unplug machine when not in use.



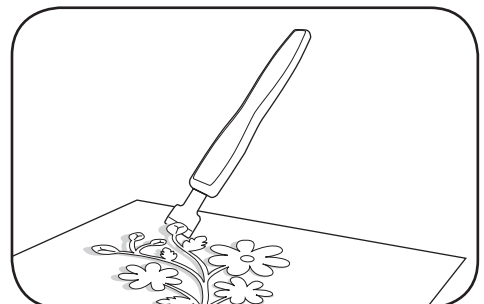
Cutting mat



1. Peel off and remove protective plastic cover from cutting mat.



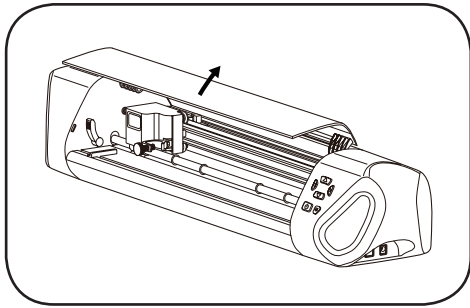
2. Line your material up with the top-left corner of the cutting mat. Press evenly and firmly into place.



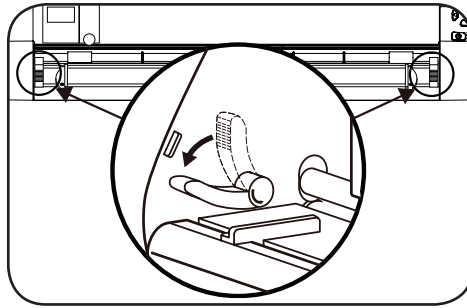
3. After you have made the cut, peel the material off of the cutting mat. When cutting more intricate designs, the Artistic Scraper (sold separately) is recommended to help remove the project.

Loading cutting mat into machine

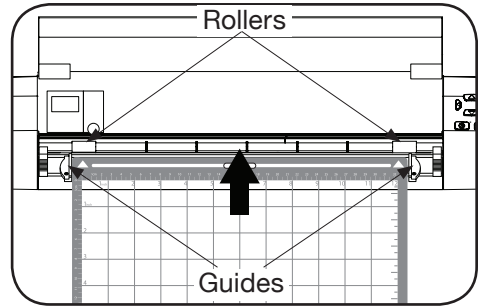
! WARNING: MOVING PARTS Keep fingers, hair and clothing away.



1. Open the front cover by lifting it up to expose the carriage and rollers.



2. Lower both levers to lift the feed roller.



3. Place cutting mat between guides on the Edge machine and insert until the leading edge touches to the rollers. Raise the levers to lock the mat in place. Use jog dials on machine for further adjustments.

Recommended Settings by Material

| MATERIAL | BLADE | PRESSURE | BLADE DEPTH | PASSES | SPEED |
|--------------------------------------|--------|----------|-------------|--------|-------|
| Vinyl | Red | 20 | 2 | 1 | 50 |
| Fabric with Terial Magic | Yellow | 75 | 4 | 1 | 50 |
| Fabric backed with Fusible Webbing | Yellow | 75 | 4 | 1 | 50 |
| Felt backed with Freezer Paper | Yellow | 100 | 8 | 1 | 50 |
| Naugahyde/Pleather (medium weight) | Blue | 100 | 8 | 2 | 50 |
| Leather (lightweight, Kid) | Blue | 100 | 4 | 1 | 50 |
| Paper 20 lbs. + | Red | 20 | 2 | 1 | 50 |
| Card Stock (medium weight) 60 lbs. + | Red | 50 | 3 | 1 | 50 |
| Heavyweight Card Stock/Cardboard | Blue | 100 | 6 | 1 | 50 |
| Contact Paper | Red | 20 | 2 | 1 | 50 |
| Crystal Template Material - Smooth | Blue | 60 | 5 | 1 | 50 |
| Crystal Template Material - Flocked | Blue | 70 | 6 | 1 | 50 |
| Stencil Plastic | Blue | 100 | 10 | 2 | 50 |
| Plastic | Red | 70 | 5 | 1 | 50 |
| Paint/Draw | None | 20 | None | 1 | 100 |

How to Read the Result of a Trial cut

| Trial Cut Results | Recommended Adjustments |
|--|--|
| Material did not cut all the way through. | The blade is not out far enough. Turn the blade holder half a mark to the right. |
| Part of the material remains on the mat. | The blade is not out far enough. Turn the blade holder half a mark to the right. |
| Material cut all the way through to the mat. | The blade is out too far. Turn the blade holder a mark to the left. |

Cutting Blade Shapes

| Blade Shape | Blade Description |
|-------------|-------------------------------------|
| | Red Cap Blade for thinner materials |
| | Yellow Cap Blade for fabric |
| | Blue Cap Blade for thick materials |

Maintenance

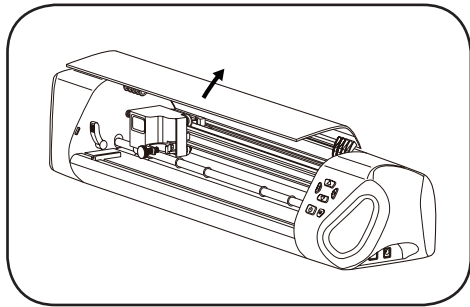
• Cleaning the blade

 **CAUTION:**  Always unplug Machine before removing or installing Blade Holder.

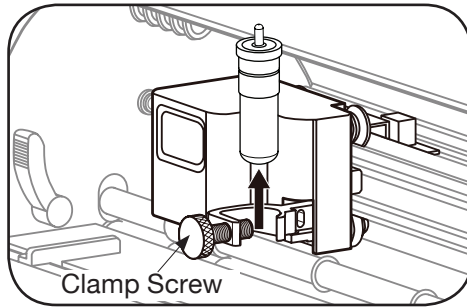
After several uses, the cutting blade may not be cutting as well as it did when it was new. In order to extend the life of your blade, some cleaning may be required. Remove the blade from the blade holder (see steps 2 – 4 of “Replacing the Cutting Blade” below) and place on a clean paper towel. Use Isopropyl Alcohol (rubbing alcohol) to rub the blade until it is clean, being careful to avoid the sharp edge. You can clean the inside of the blade holder using the Artistic Hook (sold separately).

• Replacing the cutting blade

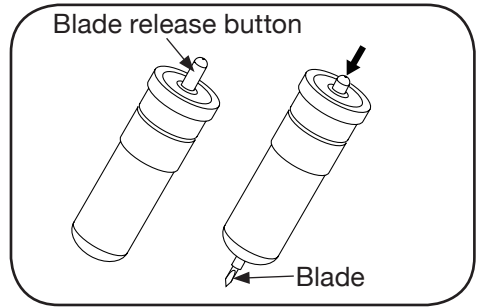
 **CAUTION: CUTTING HAZARD** Keep fingers away from exposed blade.



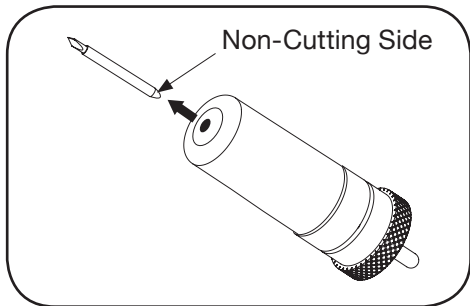
1. Open the front cover by lifting it up to expose the carriage and rollers.



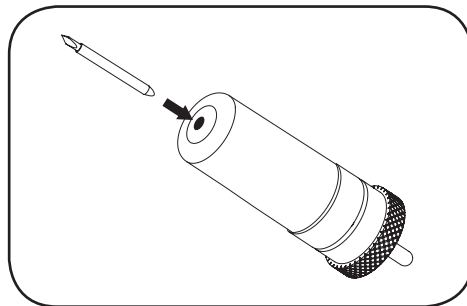
2. Loosen the blade holder clamp by turning the clamp screw counterclockwise and remove the blade holder.



3. On the top of the blade holder is a blade release button. Push down on that carefully to release the blade.



4. Carefully grab and remove the blade.



5. Remove the safety cap from the new cutting blade and carefully insert the round (non-cutting side) of the blade into the hole in the blade holder. The blade will be held in place by a magnet so that it won't fall out.

• Cleaning the Cutting Mat

Cutting mats retain their adhesiveness for many uses. If you clean it after each use, the cutting mat will no longer remain sticky. When your cutting mat no longer holds your material, or if the materials get caught in the rollers, it is time to replace your cutting mat.

1. After each use, make sure that all leftover material and debris is removed from the cutting mat. The Artistic Scraper (sold separately) is a useful tool for doing this.
2. When not in use, replace the protective covering over the cutting mat to keep dust and particles from gathering on it.

Edge Cutter FAQ / Trouble shooting

Artistic Edge machine will not turn on.

- Unplug the system from the wall. Check all components of power supply to be sure they are plugged in properly. When you are certain everything is connected, plug back into the wall and push the power button on the front of the unit.

Artistic Edge is Freezing or Stopping and won't Respond to Directional Buttons.

- Turn off the Artistic Edge. Wait 10 seconds and press the power button again to restart.

Artistic Edge is not Cutting with Quality that it Used To.

- Your cutting blade could be dirty or worn. Clean your cutting blade. If this does not help, replace the cutting blade with a new one.
- Experiment with Cutting Pressure and Blade Depth. It could be that you are not using the proper settings for the material.
- You may need to calibrate the Blade Holder. See instructions on pg. 7 to calibrate.

Corners and Edges of my Cutting Design are Distorted.

- Consider replacing your cutting blade. It may have dulled.
- Check the Cutting Pressure in Artistic SimpleCut, it may be too high for the material. Change to a lower number to lower the pressure.
- The cutting mat may have lost its adhesiveness. Try a new cutting mat.
- A fast cutting speed can pull up and distort corners on thin materials. Slow down the speed in Artistic SimpleCut to a lower speed.
- If the blade depth is too high, you may have distortion. Lower the blade depth.

Machine is Cutting Outside of the Material

- Use "Trace" function in Artistic SimpleCut to make sure that the design fits on your material.
- Adjust the starting point of the cut accordingly.
- Material is shifting from original position during cutting.
- The cutting mat may have lost its adhesiveness. Try a new cutting mat.
- If there is a sticky side to your material, put that face down and mirror design in Artistic SimpleCut so that the cut is correct.

Cutout cannot be removed from Cutting Mat

- Use the Artistic Scraper (sold separately) to remove intricate designs or adhesive materials from cutting mat.

I need to pause my cut in progress.

- Press the "Up" arrow jog button to temporarily stop the cut in progress. To resume, press the button again.

Laser Alignment is not working properly.

- Calibrate the laser by opening a design and clicking File>Export>to Cutter. Click the button that says "Calibrate". Follow on screen prompts to calibrate your laser.



My PC does not have a DVD-ROM Drive.

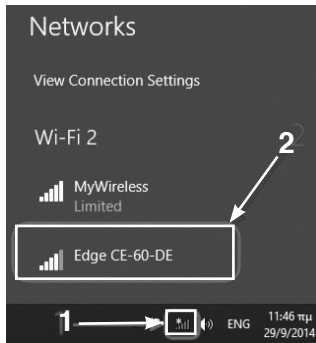
You can download the Artistic SimpleCut Software Edge Edition and included designs at <http://www.artisticcreativeproducts.com/software/edge-simplecut-download>

Edge 15X Wireless Set-up Guide

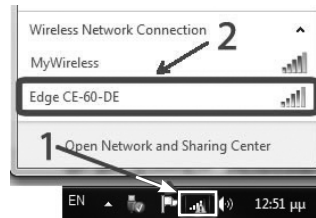


Connecting Edge directly to computer wirelessly (for Edge 15X only)

1. Push and hold down Light/wireless button for three seconds. The button will light up once the wireless function is activated.
2. In order to connect to the Edge cutter you must press on the network icon on your desktop to view available networks.



Windows 8

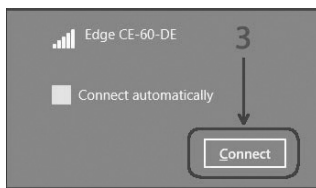


Windows 7/Vista

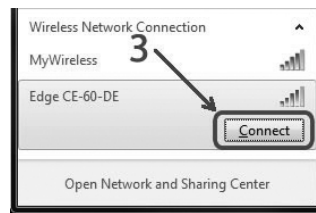


Windows XP

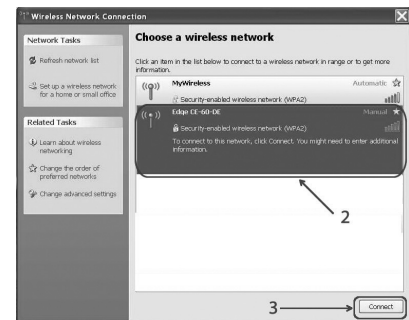
3. From the available networks, select the one called “Edge-xx-xx-xx” and press Connect to join the network.



Windows 8

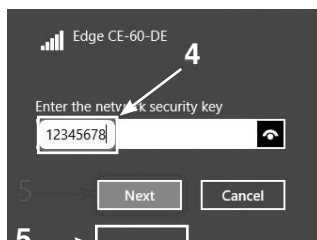


Windows 7/Vista

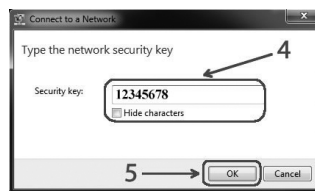


Windows XP

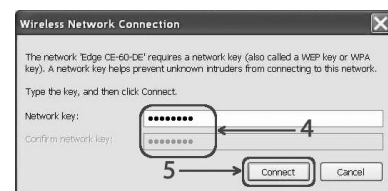
4. You will be prompted for a security key. Enter “12345678”, click “Next”.



Windows 8

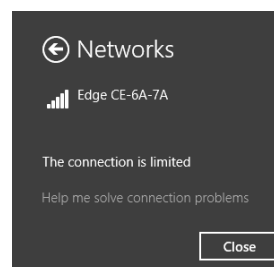
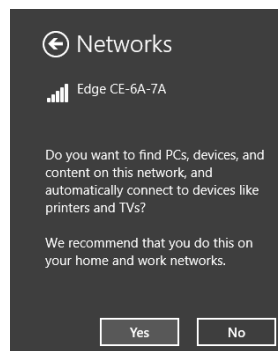


Windows 7/Vista




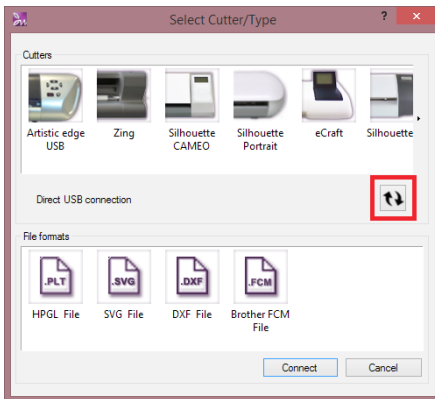
Windows XP

If the message below appears, choosing either “Yes” or “No” will make no difference in the application, but “Yes” is recommended. Then click “Close”.

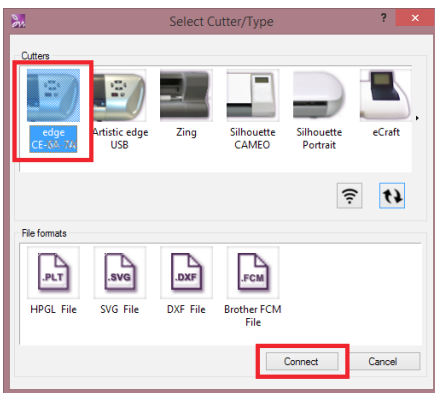


You MUST verify the wireless connection:

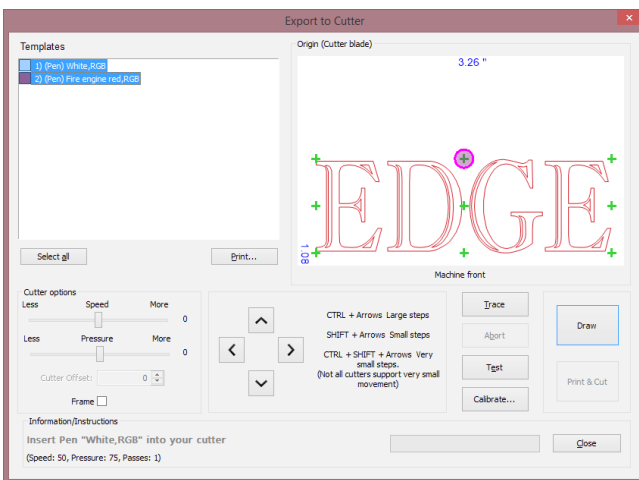
1. Make sure your Edge 15X Wireless cutter is powered on.
2. Open or create a cutwork design in Artistic software (Creative DRAWings).
3. Now choose File>Export>To Cutters.
4. The Select Cutter/Type dialogue will open, if you do not see your cutter, click on the “refresh”  button.



5. You should now see your cutter “edge CE-xx-xx” click to select your cutter and click “Connect”.



6. Now you can cut your design from the dialogue box shown below.



Note: While you are directly connected to your Edge cutter, the internet will not be available. To connect your PC back to the internet you will have to close your cutter or repeat prior steps 2-3 but this time connect to your wireless home network.

Connecting Edge cutter to your local wireless network (for Edge 15X only)

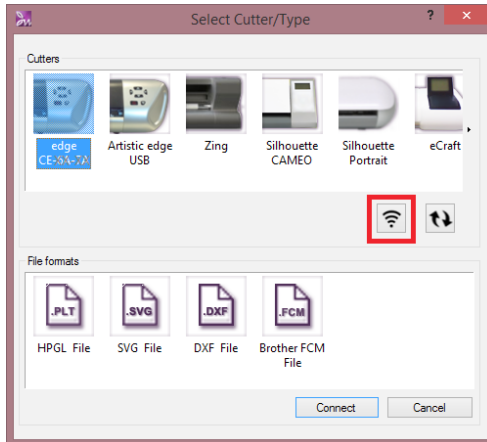
Using these following steps will allow you to permanently add your Edge cutter to your wireless home network, allowing your cutter to be ready to use without having to repeat the previous steps.

Note: For this operation you will need the password for your home wireless network (wireless router).

1. Open or create a design in Artistic software (Creative DRAWings).

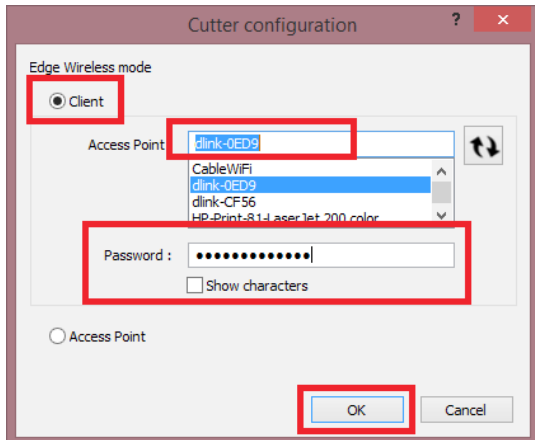
2. Now choose “File>Export>To Cutters.

3. Once the dialogue box opens, select your wireless edge cutter again and then click on the “wireless setup icon”.




The “Cutter configuration” dialogue box will open.

4. Using the “Client” mode, select the name of your home wireless network and enter the password of your wireless home network (router password), click “OK”.

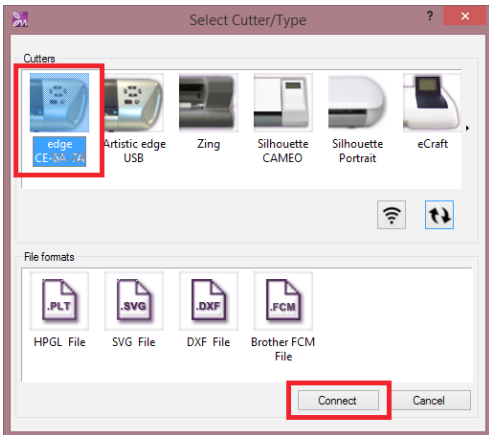


5. The red power button and wireless/light buttons will blink until the Edge has joined your home network, you may click “OK” while this process is taking place.

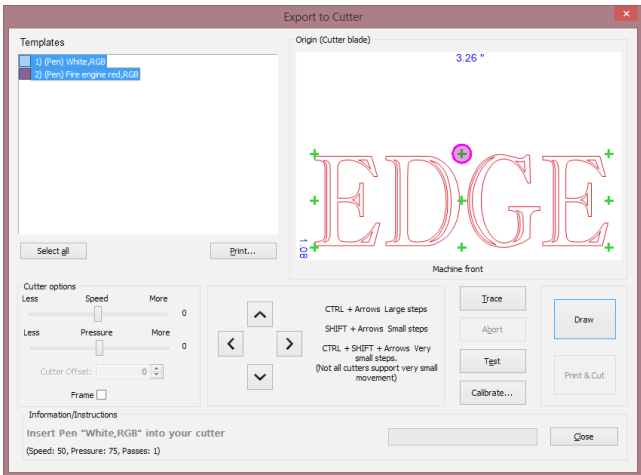


6. After the process is complete, your PC will automatically re-establish the connection to your home network, you can verify this by hovering your mouse pointer over the wireless icon located in the system tray  , you should see the name of your home wireless network.

7. The next time you send a file to your cutter, click File>Export> To Cutters, after a few moments your Edge cutter will automatically pop-up in the Select Cutter/Type window, then select your Edge cutter and click “Connect”.



8. The cutter dialogue window will open ready for you to send your file.



Troubleshooting - Emergency reset to Access point mode.

If you cannot connect to the cutter or any miss-configuration has happened and you cannot access the cutter, you must reset the cutter to the default “Access point” mode and then re-connect to any wireless network in “Client mode” again. In order to reset the cutter, you must keep the “Wireless button” and “Right limit button” pressed together for 3 seconds. When the “Power” button and the “Wireless button” is turned off, you may then release the button. At this point the “Wireless button” will start blinking until the network initialization is completed. When the blinking stops you are ready to connect to Edge-xx-xx-xx access point in order to use the cutter.



SimpleCut Software Start Guide



QuickStart

TOOLBAR GUIDE

Tools

- Rectangular Selection
- Edit Shape Nodes
- Zoom In
- Measure
- Slow Redraw
- Create Freehand Shapes
- Create Crystal Shape
- Create Ellipse
- Edit Text
- Create Rectangular Array
- AutoBorder
- Auto-Sequence Control
- Zoom In
- Zoom Previous
- Zoom All
- Pan
- Create Freehand Shapes
- Create Bezier Shapes
- Magic Wand Tool
- Create Ellipse
- Create Pie
- Create Rectangle
- Create Trapezoid/Parallelogram
- Create Polygon
- Create Star Shape
- Create Rectangular Array
- Create Circular Array

Standard

- New
- Open
- Save
- Print
- Copy
- Paste
- Undo
- Redo
- Select Technique
- Select Fabric
- Edit Palette
- Manage Hoop
- Select Cutting Mat
- Zoom/View
- 25%
- Weld
- Trim
- Intersect
- Help

Align Bar

- Align Left
- Align Centers Vertically
- Align Right
- Align Top
- Align Centers Horizontally
- Align Bottom
- Make Same Width
- Make Same Height
- Make Same Size
- Equal Horizontal Spacing
- Equal Vertical Spacing

DrawStitch

- Draw Mode
- Stitch Mode

QuickStart

KEY



Create New



Bullet



From Artwork



Rotate



Cut



Test



Point of Origin



Change Point of Origin



Move



Resize

Create a design for cutting



1. In the *Design* dialog, place a bullet in Create New and <Next>.



2. In the *Techniques* dialog, select just the Cut option (See Fig. 1). Remove the bullets from all other techniques and <Next>.

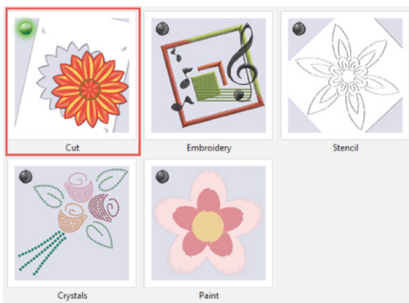


Fig. 1



3. In the *Artwork source* dialog, place a bullet in From Artwork and select the icon to browse for available graphics.

4. In the *Creative Drawings SimpleCut Samples* folder, open the Cutting Samples folder and Vector Designs - SVG folder.

(location C:\Users\Public\Documents\Creative DRAWings SimpleCut Samples)

5. Select maple_5in.svg (See Fig. 2) and <Open>.



maple_5in.svg

Fig. 2

6. Select your mat from the *Cutting Mat* dropdown menu, and <Finish>. Use the low tack mat for paper or the high tack mat for vinyl or fabric.



7. Select the design and hover the cursor over the active design until the Move icon appears. Move the design to the desired area of the mat.



8. Move the cursor to the inside corner of the active design until the Resize icon appears. Resize the design to the desired dimensions. Use the Measure tool or watch the numbers in the Tool Options box to see size.



9. Move the cursor to the outside corner of the active design until the Rotate icon appears. Rotate the design to the desired position.



10. The *Object Properties* dialog on the right of your screen shows the active technique. Cut should be selected. Click on Cutter presets to select the desired settings for the material that will be used (See Fig. 3).

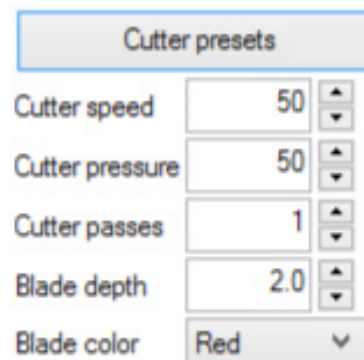


Fig. 3

QuickStart

KEY



Create New



Bullet



From Artwork



Rotate



Cut



Test



Point of Origin



Change Point of Origin



Move



Resize

Exporting to Edge Cutter

1. Send the design to the Cutter by selecting the File dropdown menu. Select *Export* and *To Cutters...* Select the cutter and <Connect>.
2. Use the arrows in the *Export to Cutter* dialog to control the movement of the cutter head. All positioning is determined by the laser light (See Fig. 4).

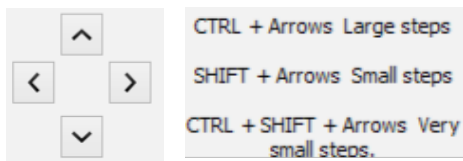


Fig. 4

3. Move the laser light to a position on the material that will not be used to perform a test cut. (The test cut will occur below and right of the laser.)

Test

4. Select the <Test> and in the *Test* dialog, again select <Test>.
5. Check the resulting cut and make any required changes to Cutter *Pressure* or *Blade Depth* in the *Test* dialog and <Apply> Note: Blade Depth is manually adjusted by moving the dial on the Blade Holder.
6. Move the laser light to a new position and retest if necessary.
7. When the test result is as desired <Close> the *Test* dialog.



8. The pink circle indicates the selected *Point of Origin* for *Trace*.



9. Click on any of the green crosses to change the *Point of Origin* and move the laser to this position relative to the design. (See Fig. 5)

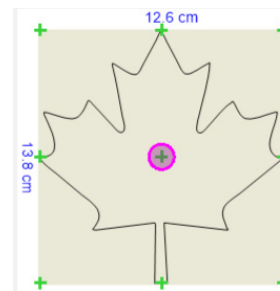


Fig. 5

10. Select <Trace> and follow the laser to preview the cutting location.

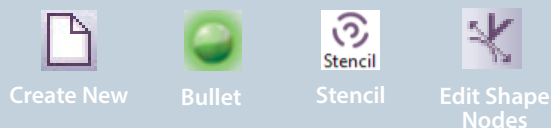
Frame

Note: Use the **Frame** option to automatically cut a frame around the design

11. Use the arrows to reposition if necessary then select <Cut>.
12. Close the *Send Completed* dialog by selecting <OK>.

QuickStart

KEY



Create a stencil design

1. In the *Design* dialog, place a bullet in Create New and <Next>.
2. Place a bullet in the Stencil technique option (Fig.6). Remove the bullets from all other techniques and click <OK>.

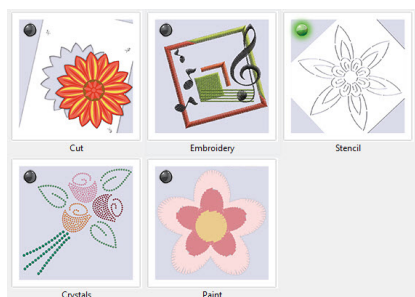


Fig. 6

3. In the *Artwork source* dialog, place a bullet in From Artwork and select the icon to browse for available graphics.
4. In the *Creative Drawings SimpleCut Samples* folder, open the Cutting Samples folder and Vector Designs - SVG folder.
(location C:\Users\Public\Documents\Creative DRAWings SimpleCut Samples)

5. Select *maple_5in.svg* (See Fig. 7) and <Open>.



6. In *Object Properties* select Stencil.



Fig. 7

7. Click on *Cutter* presets to select the Stencil material settings.

8. Select the *Edit Shape Nodes* icon. Add a Stencil Bridge with a <Right Click> on a Green (smooth node) or Red (cusp node.)
9. Select Stencil Bridge from the pop-up menu (See Fig. 8) and a gap is created in the linework (See Fig. 9).

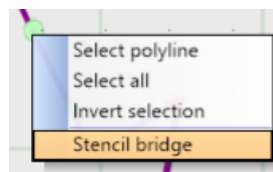


Fig. 8

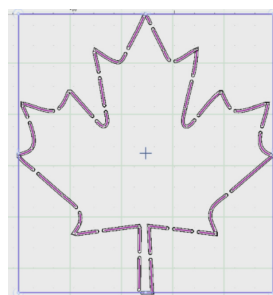


Fig. 9

10. Send the design to the Cutter by selecting the File dropdown menu. Select *Export* and *To Cutters...* Select the cutter and <Connect> .
11. Follow the steps in *Exporting to Edge Cutter* to cut the stencil design.

QuickStart

KEY



New



Bullet



From Artwork



Crystals



Save

Create a crystal design



1. Click on the *New* icon.



2. In the *Techniques* dialog, select the *Embroidery* and *Cut* options. Remove the bullets from all other techniques. (See Fig. 10) Click <Next>.



Fig. 10

3. In the *Fabric* dialog, determine the color and texture of the desired background, or click <Next> for the Standard background settings.



4. In the *Artwork* source dialog, place a bullet in *From Embroidery* and select the icon to browse for available designs.

5. In the *Creative Drawings SimpleCut Samples* folder, select *CDW0173.ngs* and <Open> Click <Next> and <Finish>. (See Fig. 11)



Fig. 11

Note: SimpleCut offers many choices for obtaining designs. This includes: vector and bitmap artwork embroidery and graphic fonts.

6. Select the outside outline of the heart by clicking on it.



7. The *Object Properties* dialog select *Crystals*. If embroidery is not needed it can be selected and deleted from the design.

8. The default crystal size is 10ss. Select the desired size and color of the crystals in *Object Properties*. Resize as necessary (See Fig. 12).

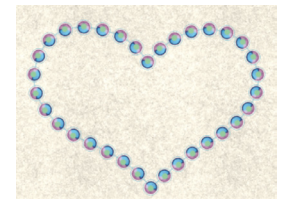


Fig. 12

9. Click on *Cutter* presets to select the *Crystal Template* material.

10. Send the design to the Cutter by selecting the *File* dropdown menu. Select *Export* and *To Cutters...* Select the cutter and <Connect>.

11. Follow the steps in *Exporting to Edge Cutter* to cut the crystal template design (See Fig. 13)

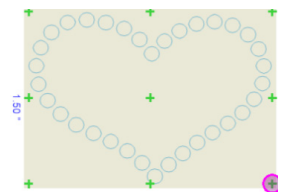


Fig. 13



12. The embroidery design is saved using *File > Save As* and selecting the appropriate file format for your machine.

QuickStart

KEY



Create
New



Bullet



From
Artwork

Create a paint design



1. Click on the *New* icon.



2. Place a bullet in the *Paint* and *Embroidery* technique options. Remove the bullets from all other techniques (See Fig. 14).

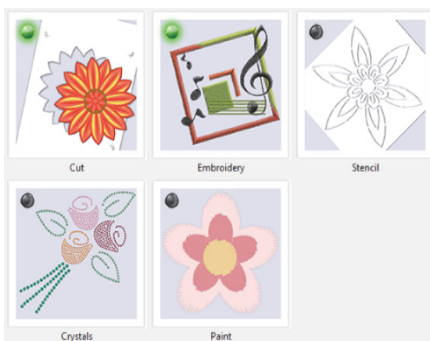


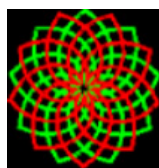
Fig. 14



3. In the *Fabric* dialog, determine the color and texture of the desired background, or click <Next> for the *Standard* background settings.

4. In the *Artwork source* dialog, place a bullet in *From Embroidery* and select the icon to browse for available designs.

5. In the *Creative Drawings SimpleCut Samples* folder, select *CDW0095.ngs* and <Open> Click <Next> and <Finish>. (See Fig. 15)



CDW0095.ngs

Fig. 15

Note: SimpleCut offers many choices for obtaining designs. This includes: vector and bitmap artwork, embroidery and graphic fonts.

6. Select the design by clicking on the plate in the *Sequence Manager* (See Fig. 16).

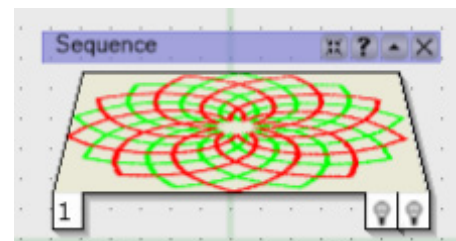


Fig. 16

7. The *Object Properties* dialog select *Line*.

8. Click on *Cutter presets* to select *Paint*.

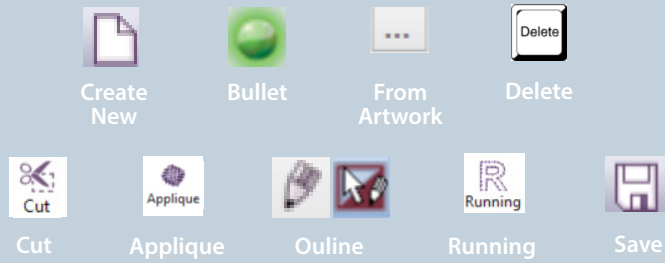
9. The design is ready for Export. Replace the *Blade Holder* with the included *Pen Holder* (ballpoint.)

10. Send the design to the *Cutter* by selecting the *File* dropdown menu. Select *Export* and *To Cutters...* Select the cutter and <Connect>

11. Follow the steps in the first lesson to *Test, Trace* and *Draw* the design.

QuickStart

KEY



Create an applique

1. Click on the *New* icon.
2. Place a bullet in the *Cut* and *Embroidery* technique options. Remove the bullets from all other techniques. Click <Next> (See Fig. 17).



Fig. 17

3. In the *Fabric* dialog, determine the color and texture of the desired background, or click <Next> for the *Standard* background settings.
4. In the *Artwork* source dialog, place a bullet in *From Embroidery* and select the icon to browse for available designs.
5. In the *Creative Drawings SimpleCut Samples* folder, select *CDW0173.ngs* and <Open>. Click <Next> and <Finish> (See Fig. 18).



Fig. 18

6. Click and drag a box to select the doves and press the <Delete> key.
7. Select the *Outline* of the heart and in *Object Properties* select *Cut*.
8. Select the heart *Fill* by clicking on the plate in the *Sequence Manager* (See Fig. 19).

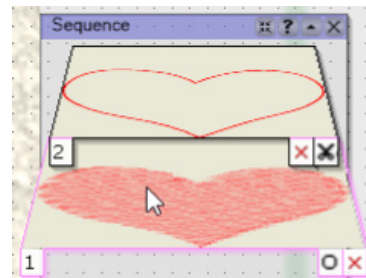


Fig. 19

9. In *Object Properties* select *Applique*. Place a checkmark in the option for *Fabric Trim*. Activate the dropdown menu to select *Pre-Cut* (See Fig. 20).

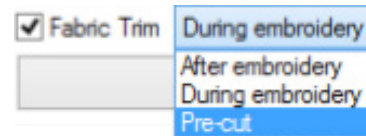
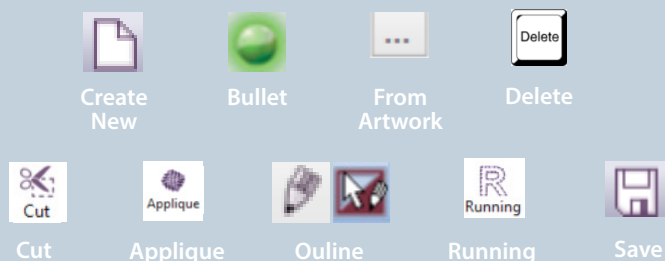


Fig. 20

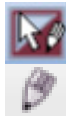
10. Click on *Cutter* presets to select the *Fabric* setting for the appropriate backing material. (Fabric treated with Terial Magic or fusible webbing.)
11. The default applique stitch has been applied, an *Outline* must be created to select a different applique cover stitch.

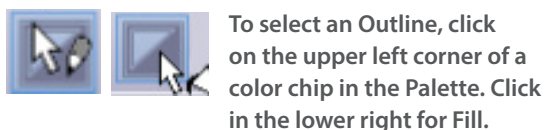
QuickStart

KEY



Create an applique (cont'd)

-  12. Click on the upper left corner of a color chip in the Palette to create an Outline. Click on the *Outline* tab (pencil) at the top of *Object Properties*.




-  13. Select from any of the stitches in the *Object Properties* dialog (See Fig. 21). (The sample design uses stitch #94 with a checkmark in *Mirror Style*.)



Fig. 21

14. Send the design to the Cutter by selecting the *File* dropdown menu. Select *Export* and *To Cutters...* Select the cutter and <Connect>
15. In the *Export to Cutter* dialog select only the *Cut* portion of the design (See Fig. 22).

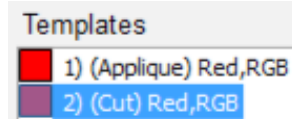


Fig. 22

16. Follow the steps in *Exporting to Edge Cutter* to cut the applique.
-  17. The companion embroidery design is saved using *File > Save As* and selecting the appropriate file format for your machine.

QuickStart

KEY



Create
New



Bullet



From
Artwork



Artwork

Create Print & Cut



1. Click on the *New* icon.



2. Place a bullet in the *Cut* and *Embroidery* technique options. Remove the bullets from all other techniques (See Fig. 21). Click <Next>



Fig. 21



3. In the *Fabric* dialog, click <Next> for the Standard background.
4. In the *Artwork source* dialog, place a bullet in *From Artwork* and select the icon to browse for available graphics.
5. In the *Creative Drawings SimpleCut Samples* folder, select *ASC-00069.cmx* and <Open> Click <Next> and <Finish>
6. Select the design by clicking on the plate in the *Sequence Manager*.
7. In *Object Properties* select *Artwork*.
8. <Right Click> on the active design and select *Autoborder*.
9. Place bullets to select *To the Outside* and *Cut* (See Fig. 22). Distance = 0.0 <OK>

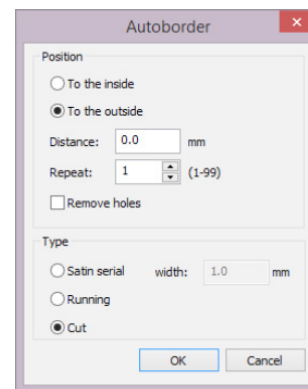


Fig. 22

10. Send the design to the Cutter by selecting the *File* dropdown menu. Select *Export* and *To Cutters...* Select the cutter and <Connect>
11. Select *Print & Cut*. The wizard provides detailed instructions.
12. Select *Print* and <OK> to send to a Printer. <Next>
13. Affix the printout to the Low Tack mat, aligning with the grid.
14. Position the laser over the cross (1) as indicated in the Print & Cut Wizard. Follow the onscreen guide to complete the process (See Fig. 23).

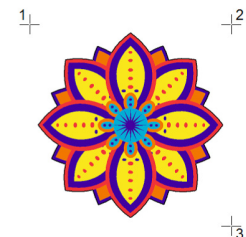


Fig. 23

QuickStart

The finished file format for a SimpleCut design is a .DRAW file, however, the software can use a variety of file types to make a design. The full list of compatible file types is below.

Basic List of Supported Files

The vector files formats that the software supports are the following:

- Adobe Illustrator (*.AI)
- Corel Graphics (*.CMX)
- Encapsulated Postscript (*.EPS)
- Enhanced windows metafile (*.EMF)
- Scalable vector graphics (*.SVG)
- AutoCAD (*.DXF)
- Windows metafile (*.WMF)
- HP GL file (.PLT)
- Brother Scan NCut (*.FCM)

The bitmap file formats that the software supports are the following:

- Bitmap files (*.BMP;*.DIB;*.RLE)
- Jpeg file (*.JPG, *JPEG, *JPE,*JFIF)
- Gif file (*.GIF)
- Tiff file (*.TIF;*.TIFF)
- Png file (*.PNG)
- Icon file (*.ICO)

Detailed Analysis of the Vector File Types and Version that are Supported

Artistic Suite/SimpleCut 7 build 8633 supports:

CorelDRAW for (*.CMX) from the export dialog select the following:

- X6, X7
- CMX - Corel Presentation Exchange Legacy (*.cmx) X5, X4, X3 and prior
- CMX - Corel Presentation Exchange (*.cmx)

Corel Draw for (*.svg)

- SVG
- versions 1.0 and 1.1

Adobe Illustrator for (*.ai) with the following options enabled during saving:

- create pdf compatible file
- embed icc profiles
- versions: 3, 8, cs, cs2, cs3, cs4, cs5, cs6, CC (17.0)

Adobe Illustrator for (*.eps):

- All versions

Enhanced windows metafile (*.emf)

- All versions

Adobe Illustrator for (*.svg) saved as:

- SVG Tiny 1.1
- SVG Tiny 1.1+
- SVG Basic 1.1
- SVG Tiny 1.2
- SVG 1.0
- SVG 1.1

Inkscape for (*.svg)

- inkscape SVG
- plain SVG
- optimized SVG

AutoCAD (*.DXF)

- All versions

Windows metafile (*.WMF)

- All versions

HP GL file (.PLT)

- All versions

Brother Scan NCut (*.FCM)

- Latest version

Additional Products:

Artistic Starter Kits

The Artistic Starter Kits contain everything needed to start embellishing with the Artistic software and Digital Cutter. Paired with the Artistic Edge Digital Cutters, the Artistic Starter Kits are the perfect place to begin. Get started with one specialty kit, or try all four to learn what the Artistic Digital Cutter can do. The tools to complete creative, embellished looks are at your fingertips.



What comes in each kit:

Fabric Starter Kit

- 4 Sheets 12"x12" Double-Sided Fusible Stabilizer
- 1 Pair of Artistic Embroidery Snips
- 1 Bottle Terial Magic Fabric Treatment Spray

Heat Transfer Starter Kit

- 5 Sheets 12"x12" heat transfer vinyl - one each: black, white, indigo, metallic gold, metallic silver
- 1 Artistic Squeegee
- 1 Artistic Hook
- 1 X-Acto Knife

Adhesive Vinyl Starter Kit

- 4 Sheets 12"x12" Adhesive Vinyl - one each: pink, black, blue, white
- 4 Pieces 12"x12" Transfer Tape
- 1 Artistic Squeegee
- 1 Artistic Hook
- 1 X-Acto Knife

Rhinestone Starter Kit

- 4 Sheets of 12"x12" Template Material - two each: smooth material, template flock
- 4 Pieces 12"x12" Transfer Tape
- 4 Pieces 12"x 12" Backing Board
- Positioning Brush
- 10 gross ss10 rhinestones (1,440 pieces)
- Pick N Release Tool

Optional Accessories*



Cutting Mats -

- 12" x 12" Low Tack Cutting Mat
- 12" x 12" High Tack Cutting Mat
- 12" x 24" High Tack Cutting Mat
- 15" x 15" Low Tack Cutting Mat
- 15" x 15" High Tack Cutting Mat
- 15" x 30" High Tack Cutting Mat

Artistic Tools-

- Artistic Hook
- Artistic Scraper
- Artistic Squeegee
- Artistic Pick n' Release
- Artistic Snips
- Artistic Tweezers

Blade Holder Accessories and Tools-

- Fine Tuning Blade Holder
- Pen Holder
- Creasing Tool
- Etching Tool
- Grinding Tool
- Punching Tool

Replacement Blades-

- Standard Cutting Blades (Red Cap)
- Fabric Cutting Blades (Yellow Cap)
- Thick Material Cutting Blades (Blue Cap)
- Combo Pack

*Some accessories are available in the U.S.A. Only.

www.ArtisticCreativeProducts.com



DRAWSTITCH LIMITED End-User License Agreement

IMPORTANT - READ CAREFULLY: THIS END USER LICENSE AGREEMENT ("the Agreement") IS A LEGAL AGREEMENT BETWEEN YOU (EITHER ON BEHALF OF YOURSELF AS AN INDIVIDUAL OR ON BEHALF OF AN ENTITY AS ITS AUTHORIZED REPRESENTATIVE) AND DRAWSTITCH LTD ("DRAWSTITCH") FOR Creative DRAWings® Artistic edition SOFTWARE ("the Software"), consisting of the Creative DRAWings® Advanced (Suite and/or Premium) edition version 7 and the Creative DRAWings® Simple Cut edition version 7.

PLEASE READ THIS AGREEMENT CAREFULLY AND PRINT OUT A COPY FOR YOUR RECORDS. THIS AGREEMENT SUPERSEDES PREVIOUS VERSIONS.

BY CHECKING "I AGREE" IN THE CHECKBOX BELOW AND CLICKING "NEXT", INSTALLING THE SOFTWARE, COPYING OR OTHERWISE USING THE SOFTWARE, YOU AGREE TO BE BOUND BY ALL OF THE TERMS OF THIS AGREEMENT REGARDING YOUR USE OF THE SOFTWARE. IF YOU DO NOT AGREE TO THE TERMS OF THIS AGREEMENT, CLICK ON THE "I DO NOT AGREE" BUTTON AND/OR DO NOT INSTALL, COPY OR OTHERWISE USE THE SOFTWARE.

Entire Agreement – Headings

This Agreement constitutes the entire agreement between the parties concerning the subject matter hereof and cancels and supersedes any prior understandings, statements, representations, warranties, discussions, negotiations, commitments and agreements both oral and written between the parties hereto with respect thereto, whether oral or in writing. The division of this Agreement into sections and the insertion of headings and titles are for convenience of reference only and shall not affect the construction or interpretation of this Agreement.

The Software

The term "Software" shall also include Demonstration/Trial Version(s) of the Software ("the Demo Software") and any upgrades, supplements, modules, add-on components, modified versions or updates of the Software, as well as any images, photographs, templates, animations, videos, and text incorporated into the Software and associated media, printed materials and "on-line" or electronic documentation, licensed to you by DRAWSTITCH and/or its licensors any time, even after the date you obtain your initial copy of the Software, unless we provide other terms along with the upgrade, supplement, add-on component, or update. Any downloading, installation or use of the Software is subject to compliance with the terms and conditions of this Agreement and all applicable laws and regulations, including laws and regulations governing copyrights, patents, trade secrets and trademarks. IN DEMONSTRATION/TRIAL VERSIONS, SOME OF THE TOOLS/FUNCTIONS OF THE SOFTWARE MAY BE DISABLED. THE EXACT TOOLS/FUNCTIONS AVAILABLE IN THE SOFTWARE MAY BE SUBJECT TO THE LEVEL/MODULE/ADD-ON PURCHASED BY THE USER. IF THE SOFTWARE IS PART OF A SOFTWARE-PACKAGE, THE TOOLS/FUNCTIONS DESCRIBED ON THE SOFTWARE-PACKAGE BOX OR ACCOMPANYING LITERATURE MAY REFER TO OTHER COMPONENTS OF THE SOFTWARE-PACKAGE OR THE COMBINED USE OF THE SOFTWARE WITH OTHER COMPONENTS OF THE SOFTWARE-PACKAGE.

The Software is protected by copyright laws and international copyright treaties, as well as other intellectual property laws and treaties. The Software is licensed, not sold.

License Grant

DRAWSTITCH grants you a license to Use one copy of the Software. "Use" means storing, loading, installing, and executing or displaying the Software. You may NOT modify the Software or disable any licensing or control features of the Software. If the Software is licensed for "concurrent use", you may NOT allow more than the maximum number of authorized users to use the Software concurrently.

You are a Licensed User of the Software only when you have fully paid for acquiring from an authorized supplier of DRAWSTITCH a licensed copy of the Software and a Hardware Key (USB Key/Security Key or dongle)

and/or Product Key and/or Activation Code and /or Upgrade Code and/or Update Code (as applicable) that renders the Software operational, for each separate computer that it will be installed or used on. You can then use the Software as long as you need, with no time limitations. You may not duplicate the Software in whole or in part, except that you can make one copy of the Software for backup or archival purposes.

You understand and agree that from the purchase of the Software you bear the risk of loss of the Hardware Key and/or Product Key, Product Key Card, Activation and/or Upgrade and/or Update Code and/or Activation/Upgrade/Update Code Card (as applicable) which accompanies/-y your copies/-y of the Software, whereas, for that matter, the Hardware Key/Product Key/Activation Code/Upgrade Code/Update Code correspond(s) to the value of the Software and should be insured accordingly.

You are entitled to replacement of a lost Hardware Key only if it was "time-locked" (wherever applicable). In such case, you will be charged only for the value of the Hardware Key as well as for the applicable delivery expenses.

Ownership

The Software is owned and copyrighted by DRAWSTITCH. Your license confers no title or ownership in the Software and is not a sale or grant of any rights in the Software. The Software is licensed, not sold. Third party suppliers and/or licensors of DRAWSTITCH may protect their rights in the event of any violation of the Terms of this End-User License Agreement.

Separation of components

The Software is licensed as a single product. Its component parts may NOT be separated for use on more than one computer. If the Software is a component of a software-package, which you have purchased as a whole product, you may use the Software as part of this software-package, but not separate the Software from it.

Copies and Adaptations

You may only make one copy of the Software for archival or backup purposes or when copying or adaptation is an essential step in the authorized Use of the Software. All such copies shall remain the sole property of Licensor, and shall be subject to the terms of this Agreement. A complete list of such copies and their exact locations shall be provided to Licensor by Licensee upon request. You must reproduce all copyright notices in the original Software on all copies or adaptations. You may not copy the Software onto any bulletin board or similar system.

Restrictions

You may NOT modify, translate, rent, lease, loan, distribute, resell for profit, assign, or create derivative works based upon the Software or any part thereof. You may NOT disassemble, decompile, reverse-engineer, decrypt, recreate or generate the Software or any part thereof. You agree not to reconfigure or modify the Software in order to enable features or functionality without notifying DRAWSTITCH or its Licensors and paying the applicable Software license fee. Any use in violation of this Section shall immediately terminate your license to the Software.

Consent to Use of Data

You agree that DRAWSTITCH and its licensors may collect and use technical information gathered in any manner as part of the product support services provided to you, if any, related to the Software. DRAWSTITCH may use this information solely to improve its products or to provide customized services or technologies to you. DRAWSTITCH may disclose this information to others, but not in a form that personally identifies you.

While installing the Software, you are being asked to register it by giving DRAWSTITCH or its licensors some personal information (name, address, zip code, country, e-mail address and occupation). (For more information, please read our Privacy Policy). Registering the Software is not obligatory though it is prerequisite in case you want to upgrade your version of the Software with the latest one, at a special upgrade-price.

Transfer

Your license will automatically terminate upon any transfer of the Software. Upon transfer, you must deliver the Software, including any copies and related documentation, to the transferee and you must inform DRAWSTITCH or its local supplier and/or licensor about the transfer. The transferee must accept the Terms of this End-User License Agreement as a condition to the transfer.

If the Software is a component of a software-package, which you have purchased as a whole product, you may only transfer the Software as part of the software-package, in other words you may only transfer the whole product and not just the Software as a separate part.

Software acquired free of charge (such as for promotional purposes or for use by educational establishments), either marked as NFR (:Not For Resale) or similar or not, CANNOT be transferred to any third party.

Termination

Without prejudice to any other rights, DRAWSTITCH may terminate your license upon notice for failure to comply with any of the terms of this End-User License Agreement. Upon termination, you must immediately destroy the Software, together with all copies, adaptations and merged portions in any form.

Export Requirements

You may not export or re-export the Software or any copy or part thereof in violation of any applicable laws or regulations.

DISCLAIMER AND LIMITATION OF LIABILITY

1. **DISCLAIMER:** THIS SOFTWARE AND THE ASSOCIATED DOCUMENTATION AND FILES ARE PROVIDED TO YOU "AS IS" WITHOUT WARRANTIES OR CONDITIONS OF ANY KIND, WHETHER ORAL OR WRITTEN, EXPRESS OR IMPLIED. DRAWSTITCH SPECIFICALLY DISCLAIMS ANY IMPLIED WARRANTIES OR CONDITIONS OF MERCHANTABILITY, SATISFACTORY QUALITY, NON-INFRINGEMENT AND FITNESS FOR A PARTICULAR PURPOSE.

2. **LIMITATION OF LIABILITY:** IN NO EVENT WILL DRAWSTITCH OR ITS SUBSIDIARIES, AFFILIATES, LICENSORS OR SUPPLIERS BE LIABLE FOR DIRECT, SPECIAL, INCIDENTAL, CONSEQUENTIAL OR OTHER DAMAGES (INCLUDING LOST DATA, LOSS OF USE, LOST PROFITS, LOSS OF SAVING OR DOWNTIME COSTS OR ANY OTHER FINANCIAL LOSS), ARISING OUT OF THE USE, INABILITY TO USE, OR THE RESULTS OF USE OF THE SOFTWARE, WHETHER BASED IN WARRANTY, CONTRACT, TORT OR OTHER LEGAL THEORY, AND WHETHER OR NOT ADVISED OF THE POSSIBILITY OF SUCH DAMAGES OR FOR ANY CLAIM BY ANY OTHER PARTY.

3. **YOUR USE OF THE SOFTWARE IS ENTIRELY AT YOUR OWN RISK.** SHOULD THE SOFTWARE PROVE DEFECTIVE, YOU ASSUME THE ENTIRE COST OF ALL SERVICE, REPAIR OR CORRECTION.

4. **NOTE:** THESE WARRANTY TERMS DO NOT EXCLUDE, RESTRICT OR MODIFY, AND ARE IN ADDITION TO, THE MANDATORY STATUTORY RIGHTS APPLICABLE TO THE LICENSE OF THE SOFTWARE TO YOU.

Guidelines for the Use of clipart designs and sample content:

The Software may contain numerous designs and/or sample content (collectively referred to as the "Images") which are either owned by DRAWSTITCH or licensed from a third-party. As a user of the Software you are free to Use, modify and publish the Images as you wish subject to the restrictions set out below. If you are uncertain as to whether your Use or intended Use is in compliance with the Guidelines set out below, DRAWSTITCH recommends that you seek the advice of your own attorney or legal counsel. DRAWSTITCH will not provide you with an opinion as to whether your Use is in compliance with these Guidelines.

1. **YOU MAY**, subject to any restrictions set out in Section 2 below:
(i) incorporate any Image(s) into your own original work and publish, display and distribute your work in any media, provided you include a copyright

notice in your work reflecting on the copyright ownership of both you and DRAWSTITCH as follows:

"Copyright (c) 201 ____ [your name] and its licensors. All rights reserved."; and

(ii) make one (1) copy of the Image(s) for backup or archival purposes.

2 YOU MAY NOT:

(i) resell, sublicense or otherwise make available the Image(s) for Use or distribution separately or detached from a product or web page. For example, the Image(s) may be Used as part of a web page design, but not be made available for downloading separately or in a format designed or intended for permanent storage or re-use by others;

(ii) provide the Image(s) to third parties or permit the Use of the Image(s) by third parties separately or as part of any other product, however, third parties may be provided with copies of the Image(s) (including digital files) as part of a work product;

(iii) create scandalous, obscene, defamatory or immoral works using the Image(s) nor Use the Image(s) for any other purpose which is prohibited by law;

(iv) Use or permit the Use of the Image(s) or any part thereof as a trademark or service mark, or claim any proprietary rights of any sort in the Image(s) or any part thereof;

(v) Use any of the Images which contain identifiable individuals or entities for any commercial purpose including, without limitation, in a manner which suggests their association with or endorsement of any product or service;

(vi) Use the Image(s) in electronic format, on-line or in multimedia applications unless the Image(s) are incorporated for viewing purposes only and no permission is given to download and/or save the Image(s) for any reason;

(vii) rent, lease, sublicense or lend the Image(s), or a copy thereof, to another person or legal entity. You may, however, transfer all your license to Use the Image(s) to another person or legal entity, provided that (i) you transfer the Software, including the Image(s), and this License, including all copies (except copies incorporated into your work product as permitted under this License), to such person or entity, (ii) that you retain no copies, including copies stored on a computer or other storage device, and (iii) the receiving party agrees to be bound by the terms and conditions of this License; or

(viii) Use any Image(s) except as expressly permitted by this License.

Update of this Agreement

DRAWSTITCH reserves the right to update this Agreement at any time and does not make any commitment that any changes in the products, services, materials and the programs will occur.

Violation of this Agreement

Violation of this License Agreement is infringement of the international laws on protection of intellectual property and will be prosecuted to the maximum extent permitted by the Law.

Severability

If any provision of this License Agreement is declared by a court of competent jurisdiction to be invalid, illegal, or unenforceable, such provision or part thereof which is necessary to render the provision valid, legal and enforceable, shall be severed from the License Agreement and the other provisions and the remaining part of that provision shall remain in full force and effect.

Copyright © 2002-2015 DRAWSTITCH LTD. All rights not expressly granted in this Agreement are reserved by DRAWSTITCH LTD. Creative DRAWings, DRAWings, and DRAWstitch, names and logos are trademarks and/or registered trademarks of DRAWSTITCH. Artistic, Artistic Suite and Artistic Simple Cut names and logos are trademarks and/or registered trademarks of Janome America Inc.

The software uses Patent Pending technology for the creation of Weaving Monogramming of letters and symbols in both graphic and embroidered output. All rights on such code are reserved.

Last update, April 2015

