

Memory Craft 500E Embroidery Editor



Embroidery Editor allows the user to combine and edit embroidery designs, plan a project, and print templates with the ease of the computer. Designs are simple to write to a USB flash drive or send directly to the 500E via direct connection.

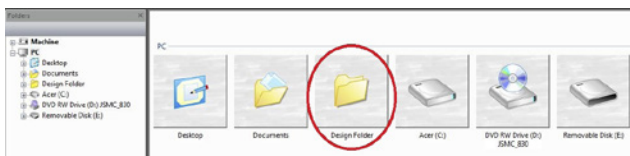
Install Embroidery Editor and USB driver from installation CD on PC. The installation guide and CD are in the original box.

Embroidery Editor Introduction Exercise:

1. Launch Embroider Editor from desktop. The program will open to the editing screen.
2. Click the drop down arrow by the hoop display bar to view all the hoop options. Select SQ20b.



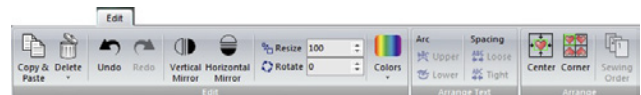
3. Click Design folder to access designs in PC.
4. Select Design folder.



5. Select Favorite Designs.
6. Select FAV_2_08.jef.



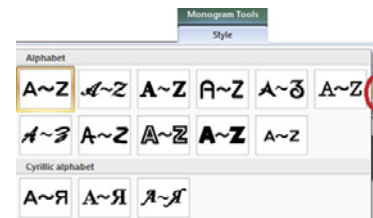
7. Click Edit tab. All editing functions of the MC500E are available.



8. Click Home tab, locate Monogram tools.
9. Select Monogram.



10. Click drop down arrow to display all fonts. Embroidery Editor includes 11 fonts!



11. Select Script.



12. Type name.



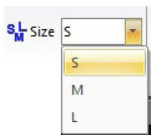
Memory Craft 500E Embroidery Editor

13. Press Enter on keyboard to insert design in center of hoop.

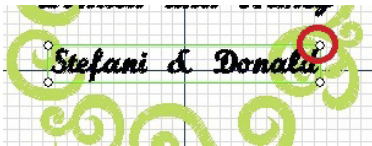


Move design to top of tree.

14. Click drop down arrow by Size. Select S(mall).



15. Type name, press Enter on keyboard. Click and drag corner nodes of design to resize. Position design as desired.

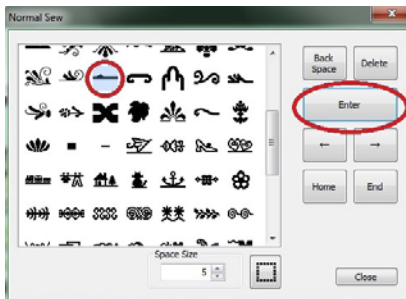


16. Add names and position.

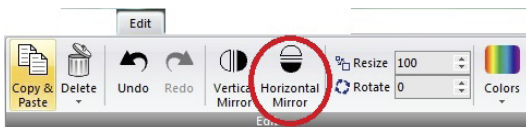


17. Select Design Font, Normal Sew.

18. Select the bar design, click Enter 4 times. Click Close.



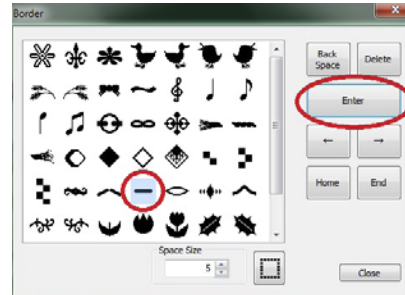
19. Click Horizontal Mirror on Edit tab.



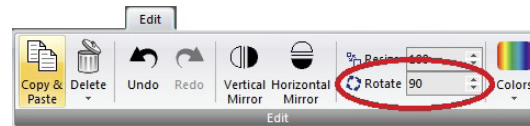
20. Move design to desired position. Add more bars as needed.

21. Select Border Design Font.

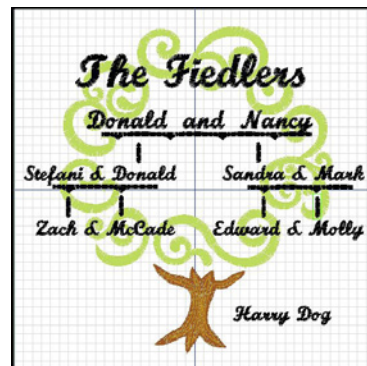
22. Locate bar design, click enter 1 time, click Close.



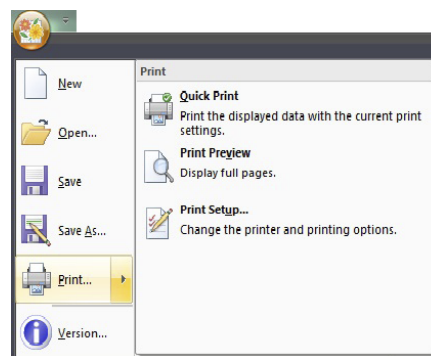
23. Rotate 90° on Edit tab.



24. Arrange family tree as desired.



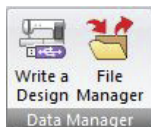
25. Click Menu icon; Print a full size template and embroidery information of design.



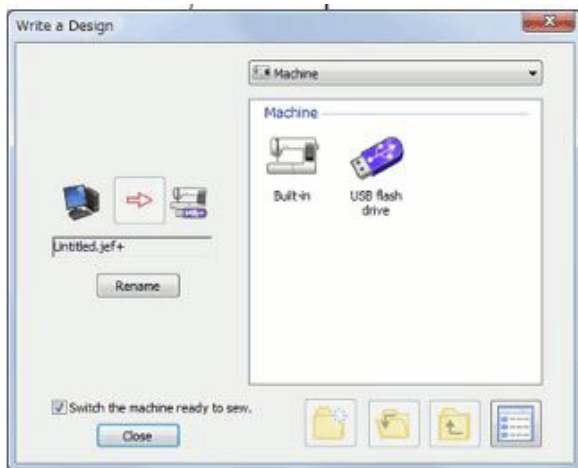
Memory Craft 500E Embroidery Editor

26. Also Save design in PC folder from this Menu.

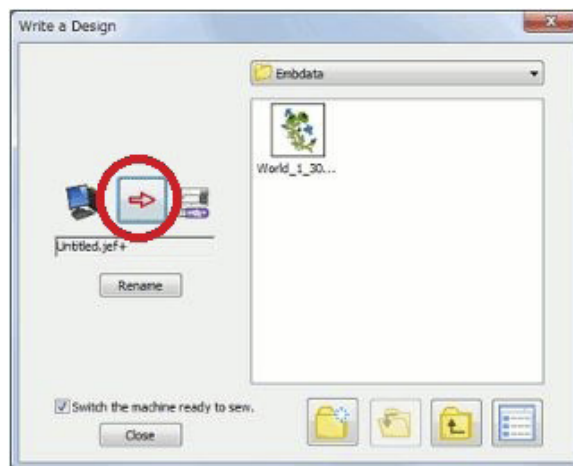
27. Home tab select Write a Design.



28. Choose the destination, direct connect to Machine or USB flash drive.



29. Choose destination folder, then click arrow to write.



Click help icon in upper right hand corner of task bar to open the on-screen instruction manual for more details.

