

Software in the Box

Artistic SimpleCut

Easily create your own personalized crafts and projects using Artistic® SimpleCut software. This unique program allows you to create your own designs for cutting a wide variety of materials, including cardstock, paper, rhinestone templates, stencils, iron-on vinyl, fabric, and more.

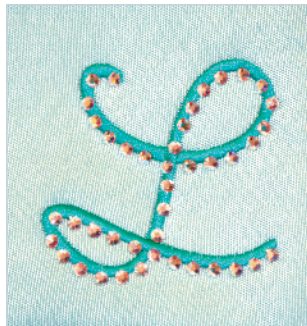
Make one of a kind appliqué from embroidery designs, graphic fonts and images. Choose from over 600 appliqué stitches and send to an embroidery machine to create beautiful, precise appliqué.

Features and capabilities include:

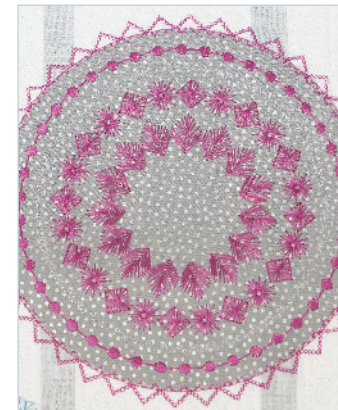
- Print and Cut – Easily cut out embroidery designs, graphics and original drawings in full color using personal printer and digital cutter. Suitable for cardstock, paper or fabric.
- Includes 3,500 preloaded designs.
- Create simple embroidery and monograms with over 600 outline stitch styles.
- Autoborder, single or multiple lines for designs, graphics and quilt blocks.
- Create automatic Appliqué for any shape.
- Rhinestone Auto fill option for quick crystal design creation.
- Fill crystal shapes using six varieties of rhinestone fill styles. Also create single line outlines.
- Individual rhinestone placement for accent or adding to embroidery designs.
- Choose from a variety of rhinestone sizes and brands.
- Stencils – Create custom stencils for quilting, fabric painting and paper crafting using new bridge assignment feature.
- Compatible with most embroidery, graphic and vector formats.



Create stencils for glass etching and painting



Crystal Embellishment



Decorative Stitching

System Requirements

Minimum Requirements:

- CPU: Minimum 1.5 GHz Intel or AMD processor
- RAM: 1 GB of RAM (for Windows XP O/S) or 2 GB of RAM (for Windows Vista™, Windows® 7 & Windows® 8 Windows® 8.1), 3GB of RAM (for Windows Vista™ 64-bit, Windows® 7 64-bit, Windows® 8 64-bit and Windows® 8.1 64-bit)
- Hard disk: 1 GB of free uncompressed space
- Graphics card: Minimum: 3D DirectX 9 accelerator with at least 128 MB dedicated RAM, 32-bit color
- Windows Vista/7: must be Aero capable
- Monitor Resolution: 1024 x 768
- O/S: Windows XP®, or Windows Vista™, Windows® 7 (with the latest Service Packs) and Windows® 8 - 8.1
- Mouse: Available
- Printer: Windows-compatible

* NOTE: Operating Systems other than those stated above are not supported.

Recommended Requirements:

- CPU: 2.0 GHz Intel or AMD processor
- RAM: 2 GB of RAM (for Windows XP® O/S), 3GB of RAM (for Windows Vista™, Windows® 7, Windows® 8, Windows® 8.1), 4GB of RAM (for Windows Vista™ 64-bit, Windows® 7 64-bit, Windows® 8 64-bit, Windows® 8.1 64-bit)
- Hard disk: 1 GB of free uncompressed space
- Graphics card: 3D DirectX 10 accelerator with at least 1GB dedicated RAM, 32-bit color
- Windows Vista/7: must be Aero capable
- Monitor Resolution: 1920 x 1080
- O/S: Windows® 7 (32 - 64 bit) (with the latest Service Packs) and Windows® 8 - 8.1 (32 - 64 bit)
- Mouse: Available
- Printer: Windows-compatible

Accessories



Cutting Mats -

- 12" x 12" Low Tack Cutting Mat
- 12" x 12" High Tack Cutting Mat
- 12" x 24" High Tack Cutting Mat
- 15" x 15" Low Tack Cutting Mat
- 15" x 15" High Tack Cutting Mat
- 15" x 30" High Tack Cutting Mat

Artistic Tools -

- Artistic Hook
- Artistic Scraper
- Artistic Squeegee
- Artistic Pick n' Release
- Artistic Snips
- Artistic Tweezers

Blade Holder Accessories and Tools -

- Fine Tuning Blade Holder
- Pen Holder
- Creasing Tool
- Etching Tool
- Grinding Tool
- Punching Tool

Replacement Blades -

- Standard Cutting Blades (Red Cap)
- Fabric Cutting Blades (Yellow Cap)
- Thick Material Cutting Blades (Blue Cap)
- Combo Pack

Specifications

Feature	Artistic Edge 15	Artistic Edge 12
Heavy Duty Construction	X	X
Fine Tuning Blade Holder	X	X
Wireless PC Connection	X	
Cutting Speed	600 mm/second	600 mm/second
15" Cutting Width	X	
12" Cutting Width		X
Maximum Cutting Depth	1 mm	1mm
Included Software	Artistic SimpleCut	Artistic SimpleCut
Included Designs	3,500	3,500
Included Mats:		
High Tack	X	X
Low Tack	X	X
Included Blades:		
Standard (Red Cap)	X	X
Fabric (Yellow Cap)	X	X
Thick Material (Blue Cap)	X	X



Dealer Information:



Cut More. Create More.
The Digital Cutter for Crafters and Sewists.



Software: Artistic SimpleCut

The World of Crafting is Unlimited – so why let a Digital Cutter limit you!

The Artistic Edge offers an endless amount of options for every kind of crafter! The included Artistic SimpleCut software can do much more than just basic editing, it also allows you to create original designs from scratch. Use one of 3,500 included designs, import artwork that you have already made, or create your own! Scrapbookers will love the ability to create custom shapes; quilters will love creating one-step appliqué and decorators will love the projects that they can create for the home.



Get Started Right Away: Starter Kits



Rhinestone Starter Kit

The Artistic Rhinestone Starter Kit contains all of the materials necessary to create and transfer rhinestone designs to your sewing or crafting project.

Kit contents:

- Plastic Project Case - 12" x 12" x 3"
- 2 sheets of 12" x 12" Smooth Template Material
- 2 sheets of 12" x 12" Template Flock
- 4 Pieces 12" x 12" Transfer Tape
- 4 Pieces 12" x 12" Backing Board
- Positioning Brush
- 10 gross ss10 rhinestones (1,440 pieces)
- Pick n' Release Tool



Heat Transfer Vinyl Starter Kit

The Artistic Heat Transfer Vinyl Starter Kit has all the supplies and tools needed to add vinyl to fabric and soft surfaces.

Kit contents:

- 5 Sheets 12" x 12" Heat Transfer Vinyl - one each of black, white, indigo, metallic gold, metallic silver
- 1 Artistic Squeegee
- 1 Artistic Hook
- 1 X-Acto® Knife



Adhesive Vinyl Starter Kit

The Artistic Adhesive Vinyl Starter Kit contains everything you need to start embellishing. With Artistic, adding vinyl to any project is simple.

Kit contents:

- 4 Sheets 12" x 12" Adhesive Vinyl - one each of pink, black, blue, white
- 4 Pieces 12" x 12" Transfer Tape
- 1 Artistic Squeegee
- 1 Artistic Hook
- 1 X-Acto® Knife



Fabric Starter Kit

The Artistic Fabric Starter Kit has great options for preparing fabric for appliqué. Get started making intricate quilts and projects right away.

Kit contents:

- 4 Sheets 12" x 12" Double-Sided Fusible Stabilizer
- 1 Pair of Artistic Embroidery Snips
- 1 Bottle Terial Magic™ Fabric Treatment Spray



Projects

For complete instructions for inspirational projects, visit:
www.ArtisticCreativeProducts.com/Accessories/Edge-Starter-Kits



Connectivity

The Edge 12 and Edge 15 can connect to a PC via USB. For desktop users, the Edge 15 offers Wireless connectivity to make sending designs to the Edge more convenient.



Open System

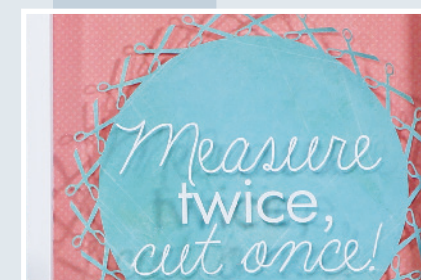
The SimpleCut software accepts multiple design and cut files for use with the Edge. SimpleCut can import the following file types:

.ai / .draw / .eps / .jpg / .png / .svg



Print and Cut

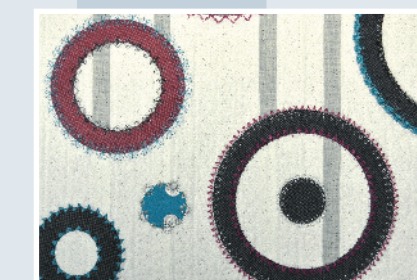
Create collages, greeting cards and scrapbooks with the Print and Cut feature. Easily trace and cut out embroidery designs, graphics, and original drawings in full color using a personal printer and the Edge.



Cutting Mats

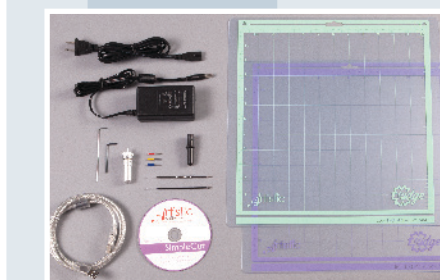
The Edge 12 and Edge 15 come standard with two adhesive cutting mats. The Low Tack mat is for cutting paper and vinyl; the High Tack mat is for cutting fabric and template flocking. The Edge 12 mats are 12" x 12" and the Edge 15 mats are 15" x 15".

As optional accessories, the Edge12 has a 12" x 24" in High Tack and the Edge 15 has a 15" x 30" in High Tack.



Industrial Design and Power

The Edge is constructed using High Quality Aluminum, and uses industrial grade cutting blades. The laser alignment provides pinpoint accuracy for your cut lines and the bar of LED lights will illuminate your project. With a maximum cutting speed of 600mm/sec and a maximum cutting pressure of 750g the Edge has the power to cut through tough materials.



Included In The Box

Each Edge comes with 2 cutting mats (High and Low Tack, Fine Tuning Adjustable Blade Holder, 3 industrial strength cutting blades (Standard, Fabric, Thick Material), Pen Holder, USB Cable and Power Cable.

