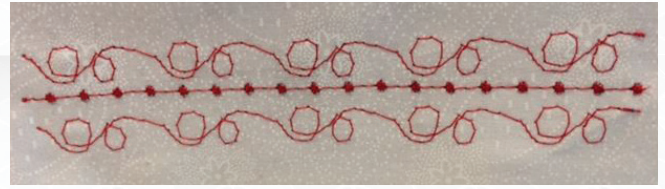


Stitch Composer for the 15000-Loop-de-Loop Lesson Three



Created by: Ann Hein, Educational Coordinator

Stitch Composer comes standard with the HMC15000, MC12000, HMC9450, HMC9400, and Skyline S7. There may be slight variations in tools due to version number of software.

Before Proceeding, look in the Help files to learn how to work with the following:

- Using Stitch Composer on a tablet PC.
- Learning to insert Start, Loop, and End points on MC12000 version of Stitch Composer.

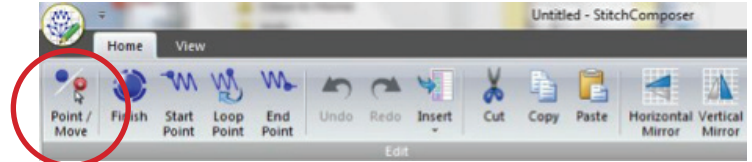
This lesson will cover:

- Thread Color (View)
- Background Color (View)
- Point Move (Home)
- Inserting with and without shift (Home)
- Horizontal and Vertical Mirror (Home)
- Settings/Spacing (Home)
- Link Manager/File management (Home)
- Creating Stitch Patterns
- Editing of Stitch Patterns

Open Stitch Composer and navigate to View. In View/Play, click Thread Color. The Color dialog box will open. Select your favorite color with the picker or create the color by changing its RGB of the color and click OK. The thread color of the stitch pattern in Preview window will change. This Thread color only affects the Preview window thread color and not the design thread color - that will stay blue. Background color works in much the same way and only affects the Preview window.

View/Play

Side Note: ** S7/9400/9450 Simulation/Preview



When creating a stitch pattern sometimes there is a need to move or relocate some of the stitch points. This can be accomplished 2 different ways. One way is to right mouse click/hold on the stitch point, the stitch point will turn red, then drag it to the new position. The other way is to use the Home/Edit/Point/Move Tool.

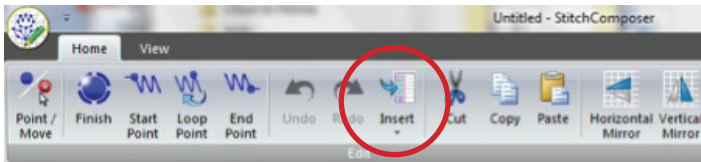
When Point/Move is selected it turns yellow and activates all the stitch points turning them purple. Now just click and drag the ones that need to be moved. This procedure is great if the pattern needs to be made a bit larger or smoothed out, once done select the icon Undo again to turn the Copy feature off.

Home/Edit/Point Move

Side Note: ** S7 / 9400/9450 Home/Edit: Point/Move and Highlight

Stitch Composer for the 15000-Loop-de-Loop Lesson Three

Home/Edit/Insert



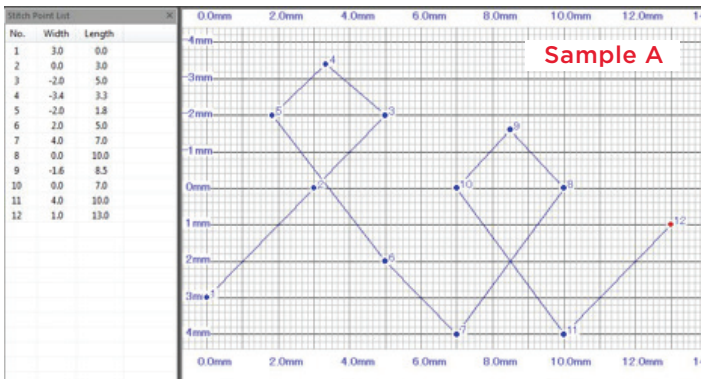
Insert is located on the Home tool bar with Undo/Redo.

Stitch points may be inserted into the pattern and the pattern shifts to fit the new point in or the point can be added **without shift** which keeps the design in place just adding the stitch point.

Insert

Try this:

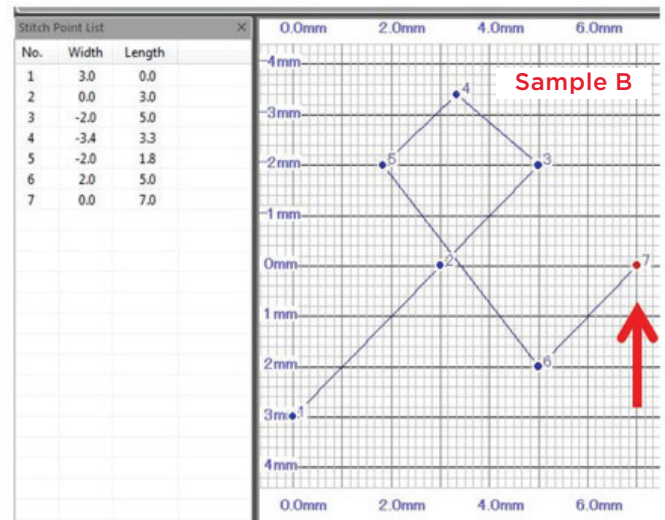
- Make a quick design that looks like Sample A using 12 points.



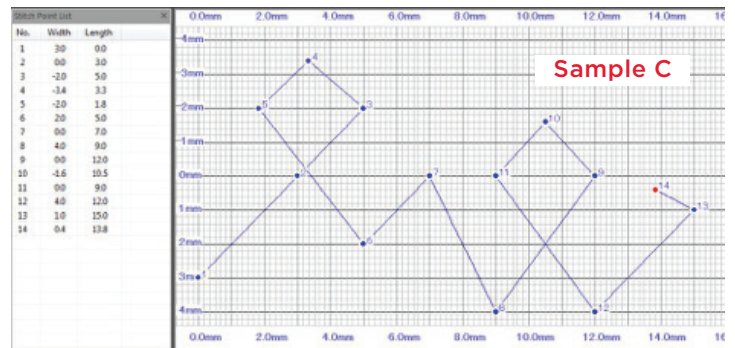
- From the Stitch Point List select stitch point #6 which is the point just before where the added stitches will be placed.

No.	Width	Length
1	3.0	0.0
2	0.0	3.0
3	-2.0	5.0
4	-3.4	3.3
5	-2.0	1.8
6	2.0	5.0
7	4.0	7.0
8	0.0	10.0
9	-1.6	8.5
10	0.0	7.0
11	4.0	10.0
12	1.0	13.0

- After selecting the stitch point left click on the Insert Icon on the tool bar. The stitch points after stitch #6 will become invisible. Place a new stitch point 2 blocks to the right and 2 up from stitch point #6 on the graph. See Sample B.



- After inserting the new point left click on the Insert Icon. The stitches will return but will be moved over to accommodate the new point. See Sample C.



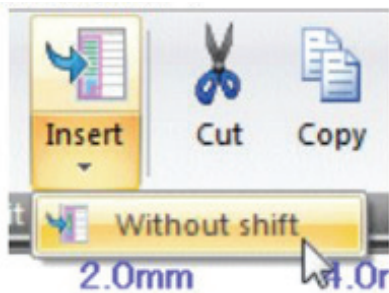
- Click on Undo until you are back to the original pattern of 12 stitches.

Stitch Composer for the 15000-Loop-de-Loop Lesson Three

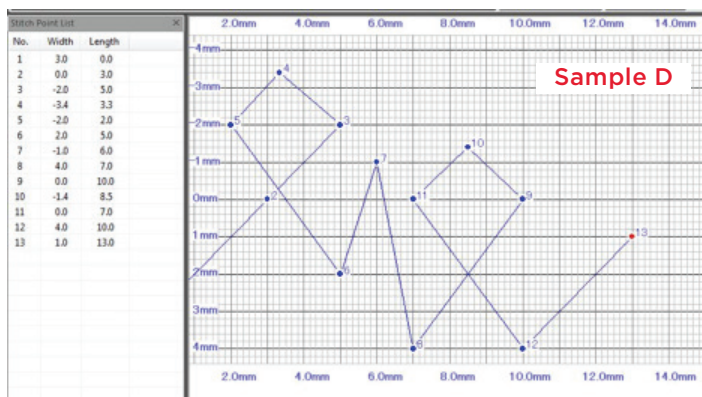
Insert Without Shift

Try This:

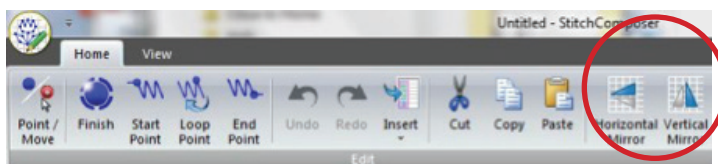
- Select Stitch point #6 again. Select the drop down arrow on the Insert Icon and click on Without shift.



- The stitch points after stitch point #6 will become invisible. Place a new stitch point one full box to the right and 3 boxes up. Click on the drop down arrow again and click on Without shift. The new point will be added without moving the design. See Sample D.



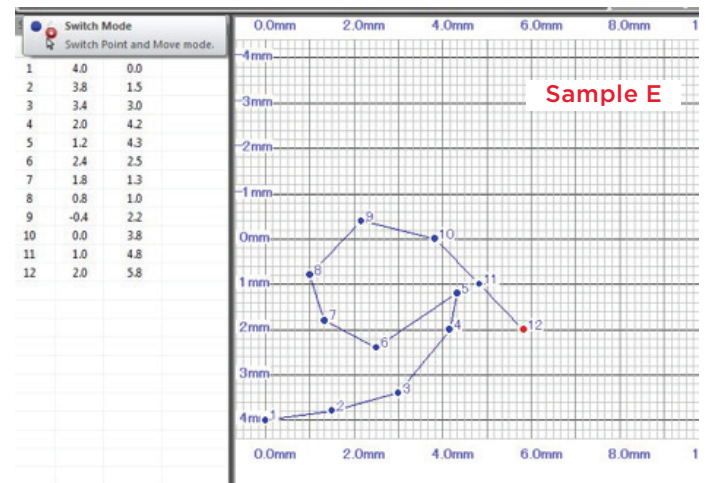
Continuing to explore the Home Tool bar/
Editing the last 2 tools here are Horizontal
and Vertical Mirror.



Using these tools makes it easy to move a group of stitch points at once. Horizontal Mirror will flip the stitches along the stitch Width or center horizontal axis. Vertical Mirror will flip the stitches along the stitch line or reverse the stitches. Stitch points are selected from the Stitch Point List window.

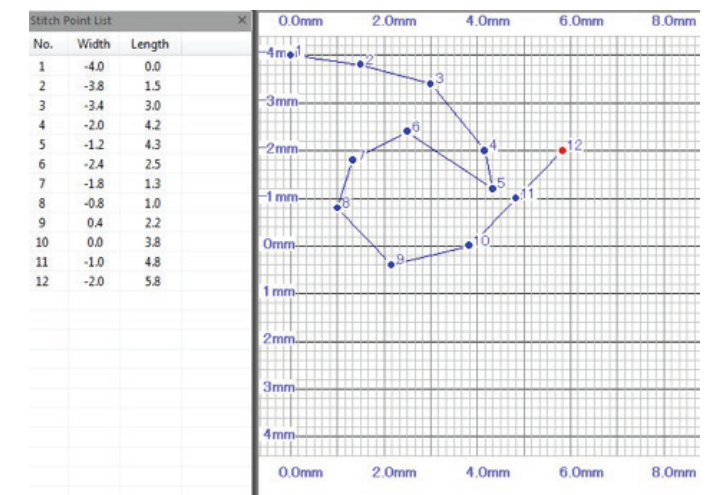
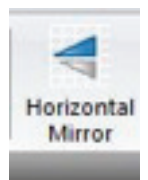
Try this:

- Make a quick design that looks like Sample E.



Horizontal Mirror

- The sample has 12 stitch points. From the Stitch Point list Select stitch #1, hold down the shift key and select stitch #12. All the stitches in the list will be highlighted. Touch Horizontal Mirror.

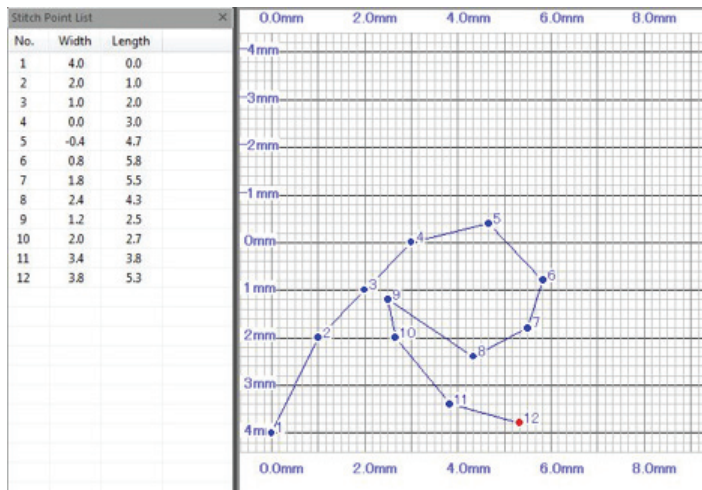
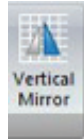


Stitch Composer for the 15000-Loop-de-Loop Lesson Three

- Touch Undo once to bring you back to the original design

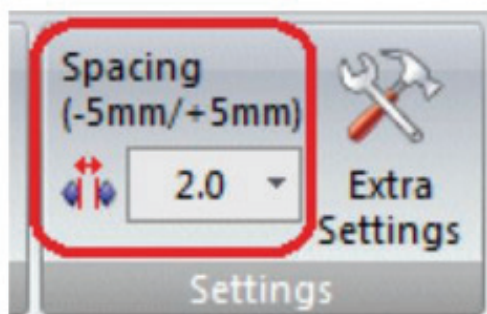
Vertical Mirror

- Select Stitch #2, hold down the shift key and select stitch #12. Those stitches will be highlighted. Touch Vertical Mirror.



- The first stitch is not selected as the stitch still needs a start point on the 0.0 axis. An error message will appear directing you to not select the first point.

Settings or Stitch Pattern Properties are located along the Home tab. This tool contains 2 areas: Spacing and Extra settings. Extra settings will be covered in a future lesson.

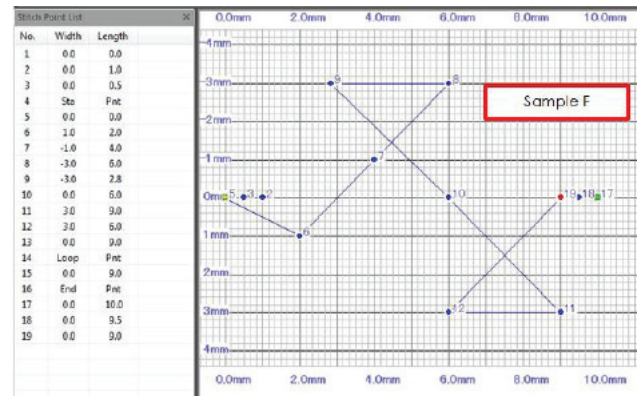


Spacing

Spacing is the length between the end of the pattern and the head of the next pattern. This can be set from -0.5 to 5.0mm. Use the drop down arrow to access this tool. When a new space value is selected for that stitch pattern it will stay with the stitch pattern after the pattern is saved. That spacing is unique to that stitch pattern. The value will revert back to 0.0 when a new design page is selected.

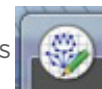
Try this:

- Make a quick design that looks like Sample F. Touch Finish.

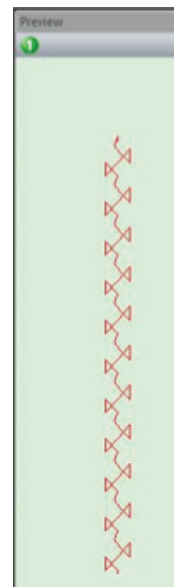


- On the Home tab notice that the Spacing is 0.0. Go to View, Play and watch the pattern stitch.

- Go back to Home. Click on the drop down arrow for spacing, change the spacing to 5.0. Go to View, Play and watch the stitch pattern. Notice that there is more space between the stitches. Select Stop.



- Go to Applications
- Using Save As, save this stitch pattern on the desk top – call it Test 1. Close Stitch Composer and reopen it. Check the spacing value – it should read 0.0. Go to Applications, Open and find your Test 1. When it opens in Stitch composer it should still have the 5.0 spacing.



Stitch Composer for the 15000-Loop-de-Loop Lesson Three

Link Manager/Write a Design

The Link Manager is found on the Home Tool Bar. Basic use information on this tool was covered in Lesson 2. It contains Write a Design and File Manager. With these tools stitch files can be transferred from the PC to USB or machine w/ cable; and stitch files can be moved, organized or deleted. One of the easiest ways to transfer the current stitch file (.stx) to the machine is using Write a Design. After making our design we could go directly to Link Manager/Write a Design and transfer the design to the machine via USB stick or USB cable. It knows what you have available for transfer. Write a Design will not open if you do not have a proper pathway open – the USB cable or USB stick must be attached. It is the preferred way to transfer because it opens the proper folders on my USB stick or machine with cable. You can see the options available and can make folders for this design or future designs. Up to 30 patterns can be saved in Created Stitches on the machine. See Lesson 2 for more information.

*Side Note: **S7 and 9400/9450 up to 40 patterns can be saved in this area on the machine.*

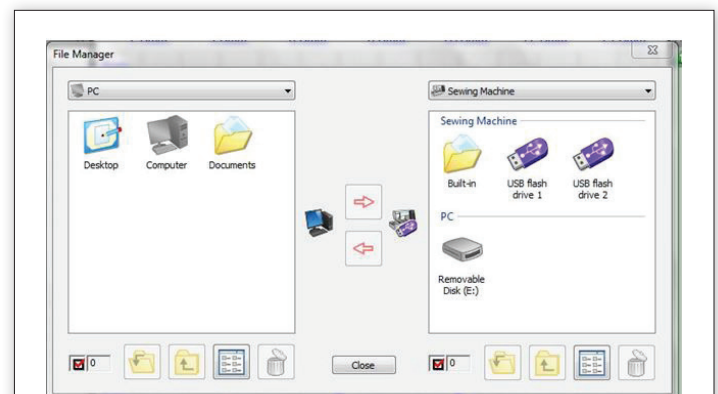
Before transferring designs, save them in your Created Stitches Folder on your PC using the Applications Button. The Applications Button can Open and/or Save stitch files. As you design more stitches or acquire more stitches you may add folders to your Created Stitches Folder to keep your new stitches organized. You can think of this as your Library of designs. You can open them with the Applications Tab to edit them further or select Write a Design to search and select the design that you want to send.

Link Manager/File Manager

File Manager is used for sending/receiving designs. You can transfer created stitch patterns/stx files from your PC to the machine with USB flash drive/USB cable AND you can transfer created stitch patterns from the machine to PC via USB cable. If you have the USB cable attached and a USB in the machine File Manager has the ability to look in both of those places.

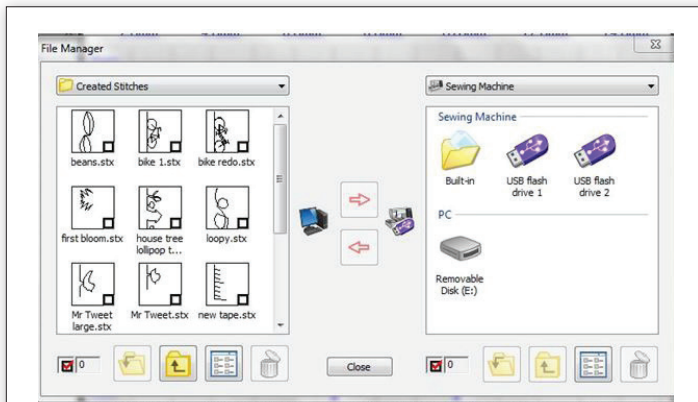
Note: Patterns/combo that are made in the machine are saved as Ord files and can be opened in the Pattern Combo Tool of HLS. Ord files can be transferred/received from the machine to PC via USB or USB cable. Using Pattern Combo Tool will be covered in a future lesson.

To send/receive a composed stitch data to MC15000, connect your PC and MC15000 with the USB cable. To send/receive a composed stitch data with USB flash drive, insert it into any USB port of your PC. Select File Manager and a two part window will open.

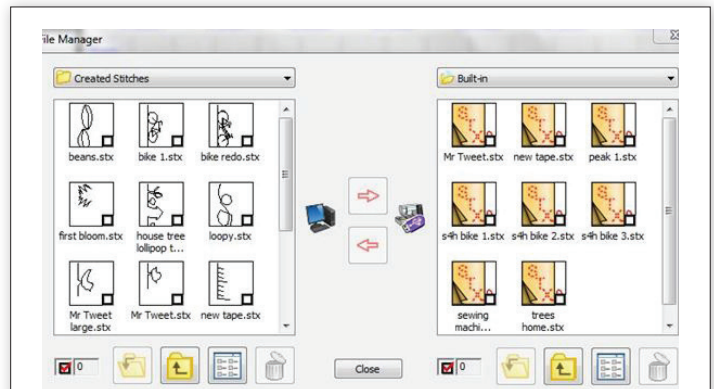


- In the left window are the PC choices. The right window shows the Sewing Machine and PC options. Having both the cable attached to your PC and sewing machine and a USB stick in your pc. It is not necessary to use both transfer methods at the same time though there are times you may want all the choices.
- The center red arrows highlight when the choices are made for transfer.
- Double left click will open any of the choices

Stitch Composer for the 15000-Loop-de-Loop Lesson Three



- Navigate on the left side to where the stx file is located. In this sample, Ann navigated to her Created Stitches Folder which was on her Desktop.
- All the stx files she created were saved here. You can choose one or two designs to transfer or transfer all. By having both the USB cable and a USB attached to the PC and machine, all the options are showing on the right side.



- Select the Built In folder. It shows the stx files that are saved in the Created Stitches tab on the machine. You can now transfer to the machine any design from the left or move any design from the right to the Created Stitches Folder on your PC.

Selecting

To select the designs just click in the small box in the corner for the Stx file. Once the design or designs have been selected, the red arrow becomes highlighted. Select the red arrow to move the designs.

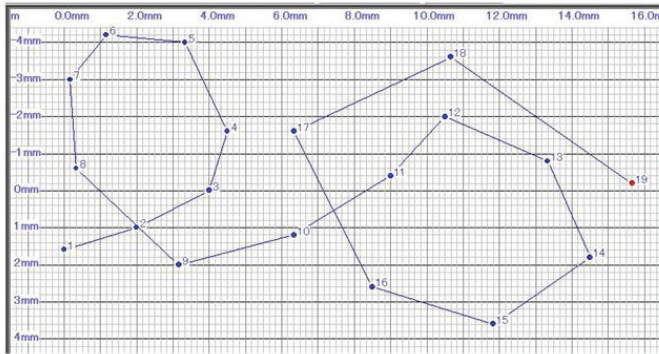


Right clicking on any Stx file will bring up the window for Rename, Delete, Check and Uncheck all. At the bottom of the window are the following tools: up/page back arrow, how the designs are viewed, and trash can for deleting.

Stitch Composer for the 15000-Loop-de-Loop Lesson Three

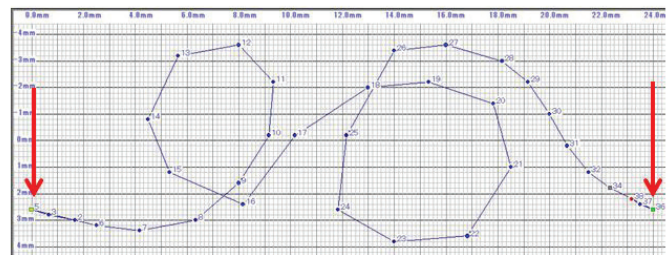
Follow along as this example will use the tools that have been covered in the first 3 lessons.

- Using 19 points, create a loopy design. Quickly place stitch points making 2 loops.



- After creating this quick design, you may want to make the loops bigger, clicking on Point/Move in the lower corner of the tool, the points are highlighted; go around moving each of the stitch points to a new location making the loops larger. Select the upper corner right corner of Point/Move Tool and the points are de-selected.
- Further editing is needed. Select stitch point 11 from the stitch point list, select the top of the Insert tool; the stitches after 11 will disappear and place point 12 just a bit away and up from point 11
- Select Insert again at the top and the rest of the stitches will reappear. Now the second loop is further away from the first.
- On the second loop the design seems rather flat from stitch point 16 to 17. Adding a point there will help the loop become more round. Select stitch point 16 from the stitch point list then select Insert but click the bottom of the tool, one click and without shift will appear, select that. The stitches after that point disappear leaving room to place a point to the left of 16 and down a bit.
- Select insert again and all the stitches appear but the design does not move.

- Now go back and adjust the stitch points after stitch point 16. Use the Point/Move tool for this.
- Add more points if needed or move more points if needed.
- Go to View, Play and see the stitch out. There is a bit of a problem with the design, the connection from the last loop to the first loop makes a sharp drop.
- Using insert and selecting stitch point #1 add 3 or four new points at the beginning. Do not worry where they are placed as they can be moved and adjusted. Select Insert again to bring back the rest of the stitches - be sure not to pick without shift as we do want the stitches to move to the right.
- Add three or four stitches after the last stitch number.
- To make room for the stitches between the last loop and the starting loop change the spacing to 4 or more.
- Select Point/Move and adjust the new stitches.



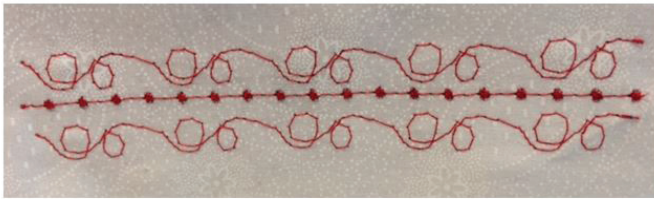
- Point #1 and the last point need to match up for a smooth transition from loop to loop. Point #1 and the last point are placed on the same vertical and on the same horizontal position to make a smooth transition from the loop sections.
- Go to View, Play and watch the stitch out.

Stitch Composer for the 15000-Loop-de-Loop Lesson Three

- Select Finish to add the start, loop and end points
- Take one last look at the design and watch the stitch out. It may need to be smoothed out a bit where the beginning and ending points are added.
- Use Point/Move to adjust the stitches once more. To get a closer view of the stitches go to View and Zoom In.
- Once the design is finalized save the design using the Applications button, I named mine Loopy.
- When ready, transfer design to the machine and do a stitch out. The sample below shows a built in stitch with the created stitch Loopy.

Check the Janome web site for earlier lessons:

- Getting Started with Stitch composer
- Lesson 2 - Stitch Composer for the 15000



Using all the tools learned continue to design more stitches. Post your stitch out results to Facebook or Pinterest #janome#stitchcomposer