

# Flower Stitch Knit Yoke

By Nancy Fiedler

*Scatter flowers over any solid knit to add a colorful detail to the yoke and sleeves of a t-shirt.*

## Supplies Needed:

- Any low shank Janome sewing machine with a maximum stitch width of 7mm.
- Janome Flower Stitch Attachment
- Janome Purple Tip Needle
- Janome Prewound Bobbin
- Optional: Elna Press

## Fabric and Notions Required:

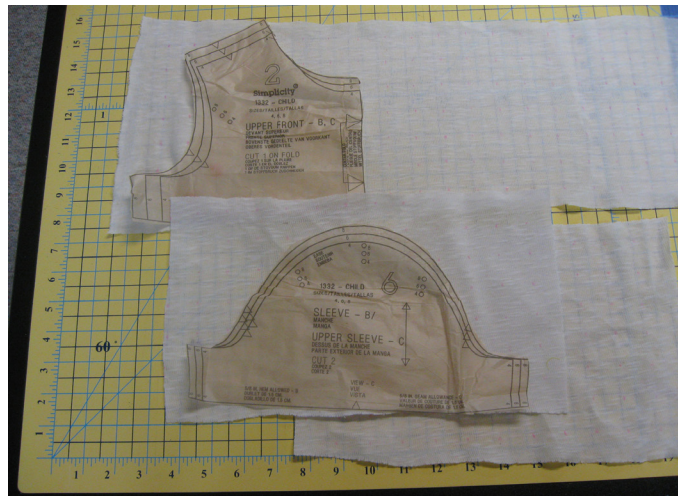
- Fabric and notions required for your favorite yoked t-shirt pattern. Simplicity 1332 was used for our sample.
- Terial Magic, liquid stabilizer
- Jenny Haskins Dissolve Magic® Sticky, pressure sensitive water soluble stabilizer
- Sulky 30 wt. cotton Blendables® in color to contrast with the fabric
- Water soluble fabric marker or pencil



# Flower Stitch Knit Yoke

## Instructions:

- Cut the knit fabric approximately 1" larger all the way around the pattern pieces for the parts to be embellished.




- Saturate the knit pieces in Terial Magic and hang dry for approximately 20 minutes.
- Press dry.
- The knit will be stiffened, but to assure that your flowers form smoothly, adhere a piece of Jenny Haskins Dissolve Magic to the wrong side.
- Place a dot spaced 1" apart vertically and horizontally on each piece.

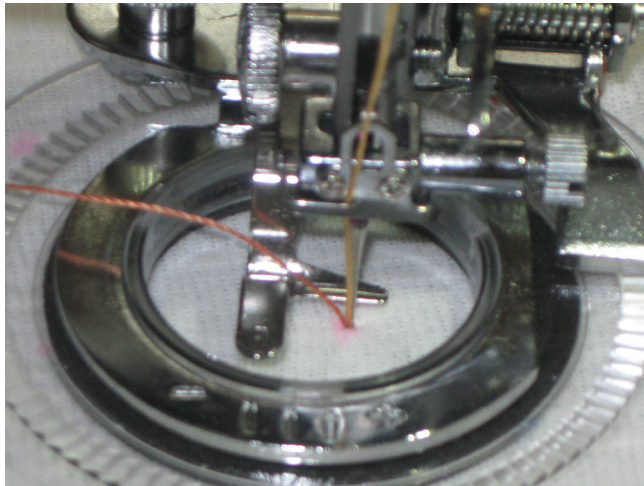


- Thread the Purple Tip Needle and insert the prewound bobbin.
- Attach the Flower Stitch Attachment
- Drop the feed dogs and set the presser foot pressure to 3.

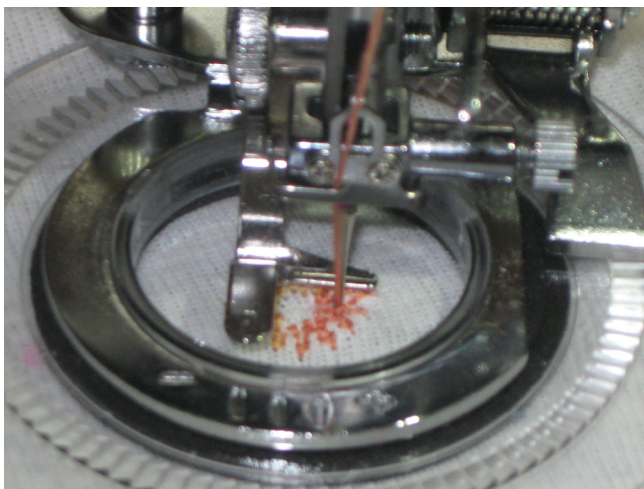
# Flower Stitch Knit Yoke



- Select tricot stitch , Width: 5mm
- Place the fabric under the attachment so that the needle is at the marked point.



- Start sewing at a medium speed.
- When the needle has returned to a starting position, raise the needle, pull the fabric from under the attachment and cut the threads.



- Pull the tails to the back and tie.

\* Important: Do not back stitch or use the locking stitch as the Flower Stitch Attachment moves forward with every needle movement. You risk damaging the attachment, breaking needles or marring the needle plate.



# Flower Stitch Knit Yoke

- Continue making flowers using every other dot in each row.



- When all of the flowers are completed, wash out the stabilizers.
- Cut out the pattern pieces and follow the construction directions to complete your t-shirt.