

---

# Introduction

---

Artistic Digitizer embroidery software is equipped with a next generation working environment which will excite with its innovative design, 3D integration, intuitive usability and stunning embroidery quality.

Every embroidery creation takes less time and effort to be made, providing you more time to enjoy your creations.

Artistic Digitizer is even more. It includes tools for creating cutting, painting and quilting designs. In addition, you can create stencil and designs with crystals/rhinestones. One software for all crafting creations.

All this in dual platforms, MS Windows® and Mac OS®. No more operating system dilemma.

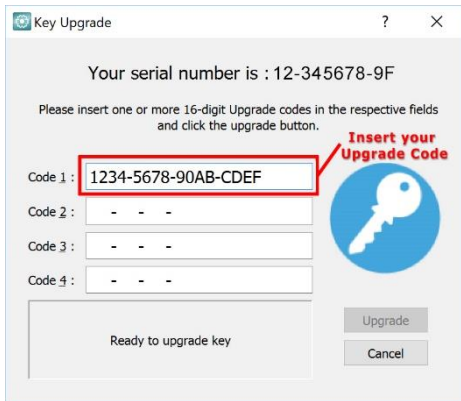


# Upgrading from Jr to Full version

---

Upgrading from Artistic Digitizer Jr to the Full version of the software is a simple process which only requires the inputting of an Upgrade Code. Please follow the instructions below and you will soon be enjoying the increased functionality and additional features that the Full version of Artistic Digitizer offers.

1. Open your Artistic Digitizer Jr software.
2. From the Help menu at the top of the screen, select the Key upgrade... option.
3. The Key upgrade dialog will appear.



4. Input the 16-character Upgrade Code that is displayed on a sticker on the inside of your Upgrade kit DVD case (including the hyphens). Example:

**Upgrade Code:**

**1234-5678-90AB-CDEF**

5. Make sure you are connected to the internet and click the Upgrade button.
6. At the bottom of the dialog screen, a message will appear informing you that your key was successfully upgraded.

Note: It is only necessary to enter/use the Upgrade Code once. After this, your key will be recognized as a Full version key on any other devices you have Artistic Digitizer installed on as long as you are connected to the internet.

# Installing the software

---

The software can be installed on MS Windows and MAC OS systems. Depending on the system, select the respective installation method.

## MS Windows installation

Insert the Artistic Digitizer installation DVD into your DVD-ROM drive. It is recommended that you close all running programs before you proceed.

If your computer does not have the DVD-ROM AUTORUN feature activated, open Windows Explorer and from the DVD-ROM drive run the setup.exe program.

If you have a link to download the installation file, you can type it in any web browser's URL field and download the file. Extract the installation file from the downloaded zip file by right clicking on it and selecting Extract All... Follow the instructions to extract the installation file, then go to that folder and run the file by double clicking on it.

If you are running the installation on a Windows 7/ 8.1/10 operating system a Security screen will appear with information about the new software and it will ask you if you allow it to be executed. You need to either log in as administrator or select Allow if you are already logged in as administrator.

1. If applicable, keep your Hardware USB Key and cutter unplugged during the installation of the software. Click Next> to continue.
2. When the window with the License Agreement opens:  
Click on the first radio button of the window, confirming that you accept the terms of the license agreement. (CAUTION! PLEASE READ THE TERMS &

- CONDITIONS OF THE LICENSE AGREEMENT CAREFULLY). Then click the Next> button.
3. At the next dialog, you can specify where you want the software to be installed. You can change the Installation Folder by clicking on the Browse... button and selecting another directory. Click Next > to continue.
  4. At the next dialog, you can select which software components you want to be installed. By default, all components will be installed. Uncheck those you do not require. Click Next> to continue.
  5. At the next dialog you can select how the software will handle the various embroidery design formats. Select if you want to open only Draw file formats or all embroidery file formats. Click "Next>" to continue.
  6. The software is now ready to install. Click Install to begin. During the installation, you can click the Show details button to view the installation process.
  7. During the installation process, multiple dialogs might appear requesting access to install embroidery machine drivers. Click Install to continue.
  8. At the end of the process, you will be informed that the installation is complete. Click Next > to continue.

Now Artistic Digitizer® software is installed on your computer. To run the software, open the Windows Start menu, click on All Programs > Artistic Digitizer 1.5 and then click on Artistic Digitizer 1.5.

## MAC OS installation

Insert the Artistic Digitizer installation DVD into your DVD-ROM drive. It is recommended that you close all running programs before you proceed. The installation will start automatically.

You can download the installation file from the following webpage:


**[http://www.janome.co.jp/e/e\\_downloads/artistic\\_installation\\_user\\_guide.html](http://www.janome.co.jp/e/e_downloads/artistic_installation_user_guide.html)**

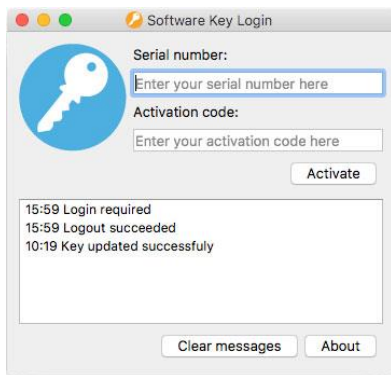
1. On the Dock area you can see the download progress.
2. Once the download is complete, the download icon will change.
3. If you click on the Downloads icon, then a list with the latest downloaded files appears on top. Click on the Artistic.dmg file.
4. The file you've downloaded is a disk image and by clicking on Artistic.dmg it is mounted onto your Mac and you can see its contents. On your desktop, there is an icon for the mounted disk image. If you accidentally close the Finder window, you can start again by double clicking the Artistic icon on your desktop.
5. To perform the installation of Artistic Digitizer you must drag the icon onto the Applications folder icon that you can see.  
Drag the Artistic application onto the applications folder icon.  
Notice: Do not double click on the icons because this will run the program through the mounted media and it will not be installed.
6. Installation is complete, and at this point you can Eject the installation media. Right click on Artistic on your Desktop and use Eject option.
7. To Run the software, start Finder, navigate to Applications folder and locate the Artistic icon.
8. The Software key login window will appear. Now you need to type the Serial number and the Activation code into the respective fields. To proceed with the activation, you need to be connected to the internet. After typing the key and activation code press Activate.
9. After successful activation, you get a message Key updated successfully.

10. Now you are ready to start Artistic Digitizer, go to Applications folder and locate the Artistic icon. Double click on this icon to start the software.
11. The End-User License Agreement dialog will appear. Click on the first button, confirming that you accept the terms of the license agreement. (CAUTION! PLEASE READ THE TERMS & CONDITIONS OF THE LICENSE AGREEMENT CAREFULLY). Then click the OK button.
12. You are ready to use the Artistic digitizer.

## Software key

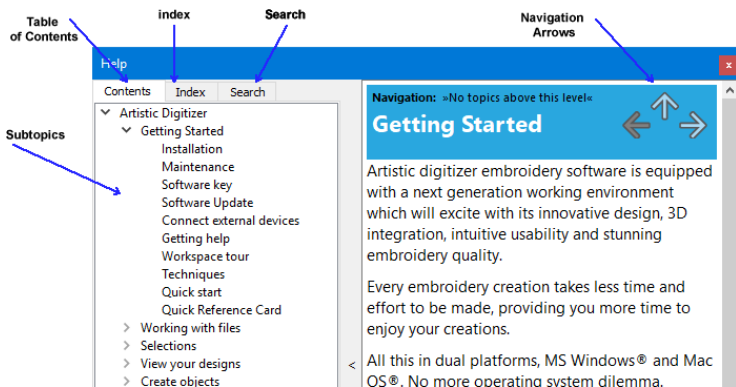
Together with the software you will get a software key that consists of a Serial number and an Activation code. These two numbers can be found in the packaging of the software and they must be inserted in the respective fields of the Software key tool.

The Software key tool  is installed together with the software and can be found at the bottom right corner of the task bar on MS windows (next to the antivirus) and at the top right corner of the MAC's Menu bar. The Icon color will vary, based on its status. To activate the Software key, you have to insert the Serial number and the respective Activation code.



# Getting Help

You can find the User guide, at the Help menu of the software. It is called Help topics and you can access it by pressing F1 shortcut key.



- **Table of contents:** allows you to see all of the information organized by subject. Click top-level entries to view subtopics.
- **Index:** allows you to look up specific terms or concepts in alphabetical order. Type in a word or phrase.
- **Search:** lets you search the full text of the Help for a particular word or phrase

The same manual is included in pdf file format and can be accessed from:



**MS Windows:** select **Help > Printable Help**

**MAC OS:** select menu **Help > Printable Help**

OR online from the following webpage:

**[http://www.janome.co.jp/e/e\\_downloads/artistic\\_installation\\_user\\_guide.html](http://www.janome.co.jp/e/e_downloads/artistic_installation_user_guide.html)**

Another help resource is the "Show help on" that can be also accessed from the "Help" menu or by pressing the "Shift+F1" shortcut key.

- **Show help on:** can provide help for a specific tool, area, or function. When you activate "Show help on", the mouse pointer turns to a pointer with a question mark. Click on any function you want in Show help on and the subject will be displayed.

Finally, "tooltips" provide helpful information about application controls when you position the pointer over icons, buttons, and other user interface elements.

---

# Getting Started

---

After installing the software, you are now ready to create your first design. This section contains a quick overview of the software's features and how you can use them to create your first designs.

Artistic digitizer is a very easy to use software that anyone can learn easily. Spend some time to reading the software's instructions and you will realize how easily and quickly you can create complete designs.



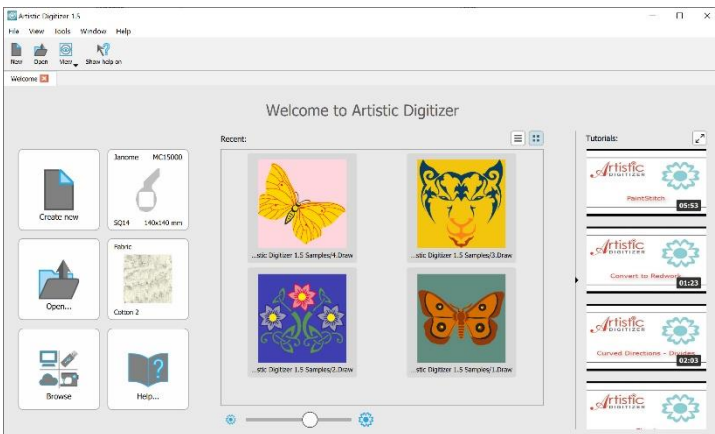
## Welcome page

Whenever you open the software the Welcome screen appears. From here you can select what to do in the software. You can Create new designs, Open existing, launch the design Browser, set the default Fabric and Hoop and view training video Tutorials.

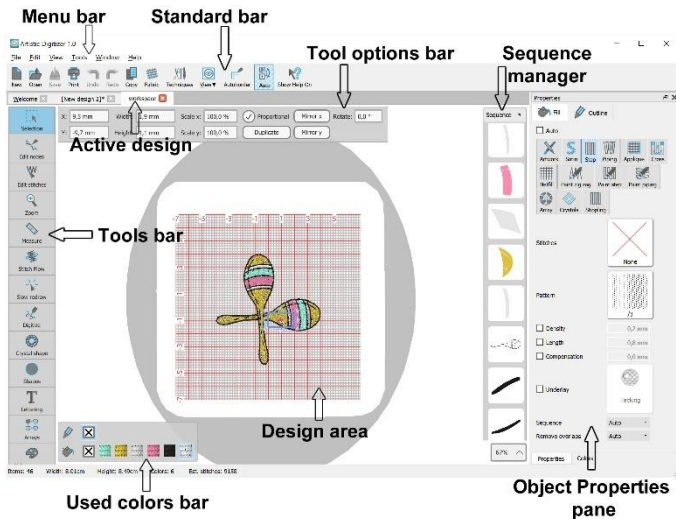
Click on any of the sample designs in the Recent designs list to open.

## Workspace

The main application window consists of a variety of menus, toolbars, wizards and dialog windows. All these together with the design tabs are called a



workspace. The way that the workspace components and windows are placed is fully customizable. When opening the application for the first time all these tools are placed by default in a way to help you focus on your task (creating, editing and viewing designs).



Make any arrangement on workspace components in order to have a workspace that matches your personal preferences.

# Quick Reference Card

General		
	MS Windows	MAC OS
<b>New document</b>	Ctrl+N	Cmd+N
<b>Open document</b>	Ctrl+O	Cmd+O
<b>Save document</b>	Ctrl+S	Cmd+S
<b>Save As document</b>	Ctrl+Shift+S	Cmd+Shift+S
<b>Print document</b>	Ctrl+P	Cmd+P
<b>Export to image</b>	Ctrl+Shift+E	Cmd+Shift+E
<b>Export to SVG</b>	Ctrl+Alt+E	Cmd+Alt+E
<b>Help</b>	F1	F1
<b>Show Help on...</b>	Shift+F1	Shift+F1

Selection		
	MS Windows	MAC OS
<b>Select all</b>	Ctrl+A	Cmd+A
<b>Invert selection</b>	Ctrl+Shift+I	Cmd+Shift+I
<b>Top object</b>	Ctrl+Home	Cmd+Home
<b>Bottom object</b>	Ctrl+End	Cmd+End
<b>Next object</b>	Tab	Tab
<b>Previous object</b>	Shift+Tab	Shift+Tab

Modifications		
	MS Windows	MAC OS
<b>Undo</b>	Ctrl+Z	Cmd+Z
<b>Redo</b>	Ctrl+Shift+Z	Cmd+Shift+Z
<b>Select fabric</b>	Ctrl+F	Cmd+F
<b>Options</b>	Ctrl+T	Cmd+T
<b>Optimizer options</b>	Ctrl+Shift+J	Cmd+Shift+J
<b>Repeat last transform</b>	Ctrl+R	Cmd+R
<b>Group</b>	Ctrl+G	Cmd+G
<b>Ungroup</b>	Ctrl+U	Cmd+U
<b>Combine</b>	Ctrl+L	Cmd+L
<b>Break apart</b>	Ctrl+K	Cmd+K
<b>Convert to curves</b>	Ctrl+Q	Cmd+Q
<b>To front one</b>	PgUp	PgUp
<b>To back one</b>	PgDn	PgDn
<b>To front of design</b>	End	End
<b>To back of design</b>	Home	Home
<b>Directions</b>	Ctrl+Shift+D	Cmd+Shift+D
<b>Divide</b>	Shift+D	Shift+D
Edit Stitches		
	MS Windows	MAC OS
<b>Insert stitches</b>	Enter	Return
<b>Delete stitches</b>	Backspace	Backspace

Designing		
	MS Windows	MAC OS
<b>Insert symbol</b>	Ctrl+F11	Cmd+F11
<b>Insert Clipart</b>	Ctrl + I	Cmd + I
<b>Delete objects</b>	Delete	Delete
<b>Edit shape nodes</b>	F10	F10
<b>Freehand</b>	F5	F5
<b>Outline</b>	Ctrl+F5	Cmd+F5
<b>Rectangle</b>	F6	F6
<b>Trapezoid</b>	Shift + F6	Shift+F6
<b>Ellipse</b>	F7	F7
<b>Pie</b>	Shift+F7	Shift+F7
<b>Polygon</b>	Y	Y
<b>Star</b>	S	S
<b>Text</b>	F8	F8

View		
	MS Windows	MAC OS
<b>Properties</b>	Alt+Enter	Alt+Enter
<b>Zoom in</b>	Z	Z
<b>Zoom previous</b>	F3	F3
<b>Zoom all</b>	Shift + F4	Shift + F4
<b>Zoom design</b>	F4	F4
<b>Hand tool (pan)</b>	H	H
<b>Measure</b>	F9	F9
<b>Overlapping crystals</b>	O	O

Align bar		
	MS Windows	MAC OS
<b>Align Left</b>	L	L
<b>Align Right</b>	R	R
<b>Align Top</b>	T	T
<b>Align Bottom</b>	B	B
<b>Align centers Horizontally</b>	C	C
<b>Align centers Vertically</b>	E	E
<b>Same width</b>	Shift+W	Shift+W
<b>Same height</b>	Shift+H	Shift+H
<b>Same Size</b>	Shift+S	Shift+S
<b>Horizontal Spacing</b>	Shift+C	Shift+C
<b>Vertical Spacing</b>	Shift+E	Shift+E

Backdrop		
	MS Windows	MAC OS
<b>Hide</b>	Alt+1	Alt+1
<b>Below Embroidery</b>	Alt+2	Alt+2
<b>Edge enhance</b>	Alt+3	Alt+3
<b>Above Embroidery</b>	Alt+4	Alt+4