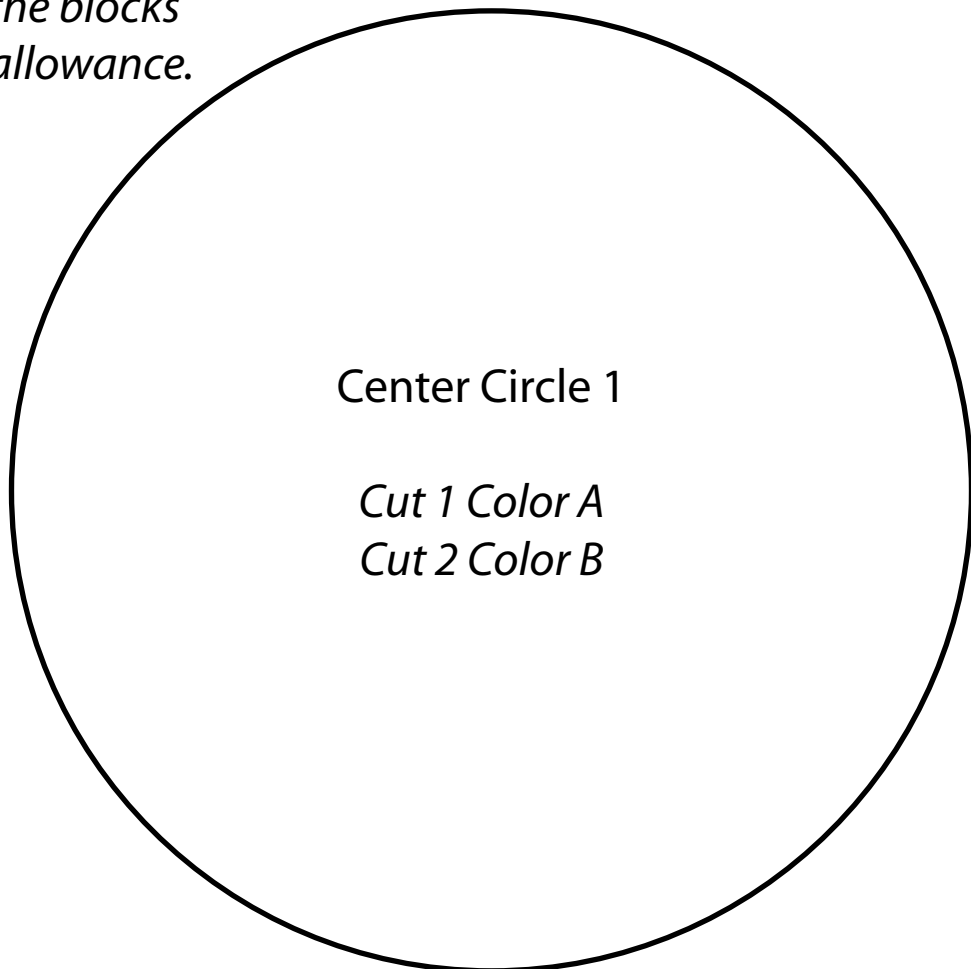
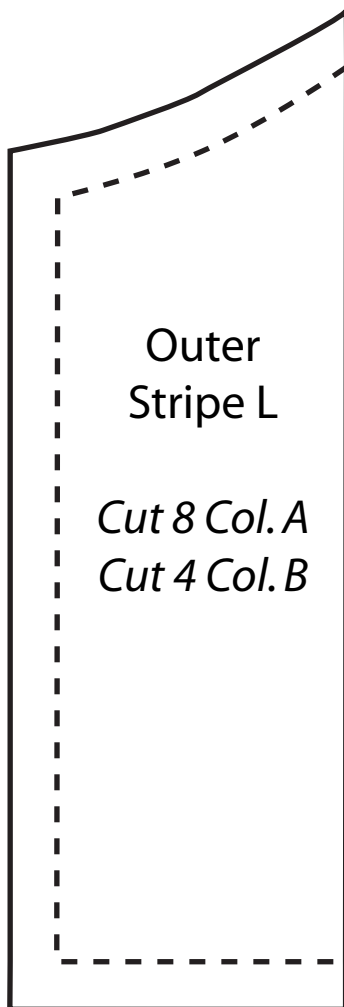
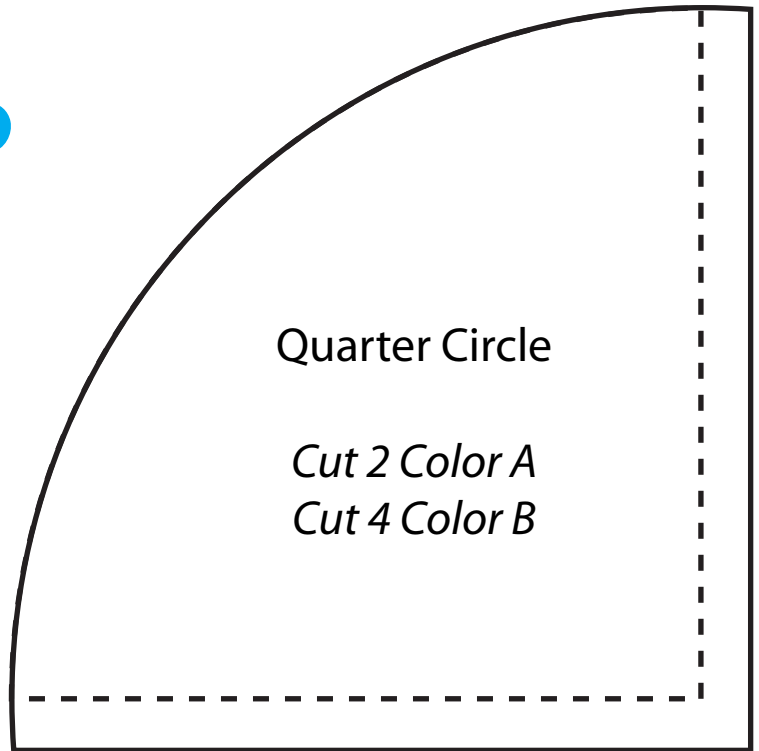
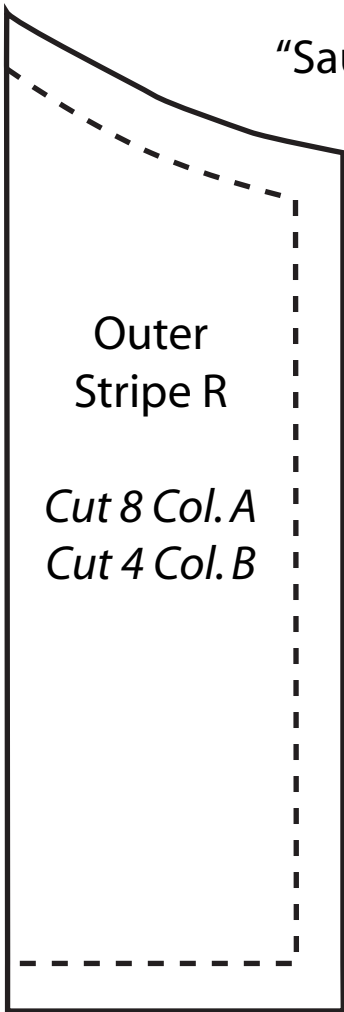


"Saucy Summer Table Runner" - template page 1

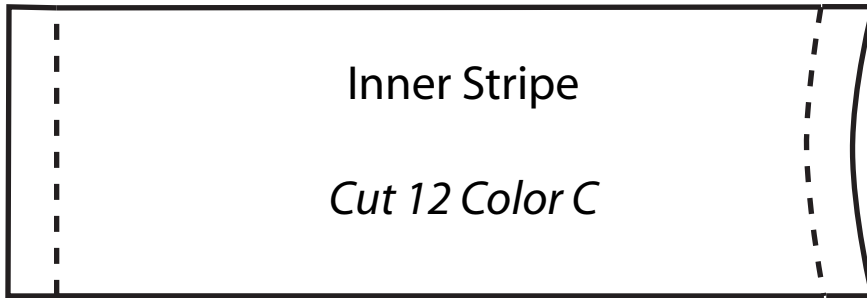


*Solid lines  
are cutting  
lines.*

*Dashed lines  
show where  
the piece will  
be overlapped,  
or where it will  
be in the blocks  
seam allowance.*

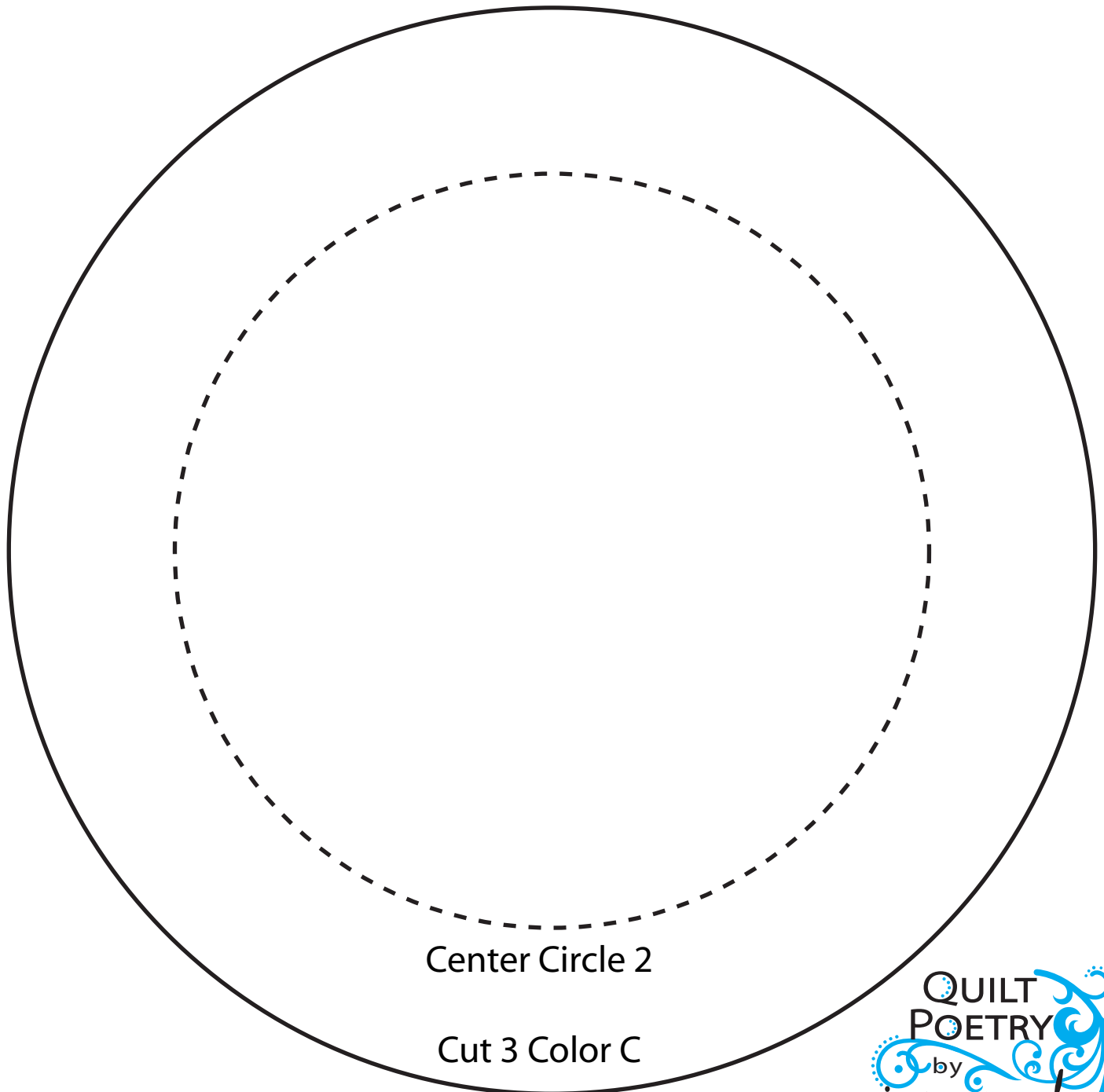


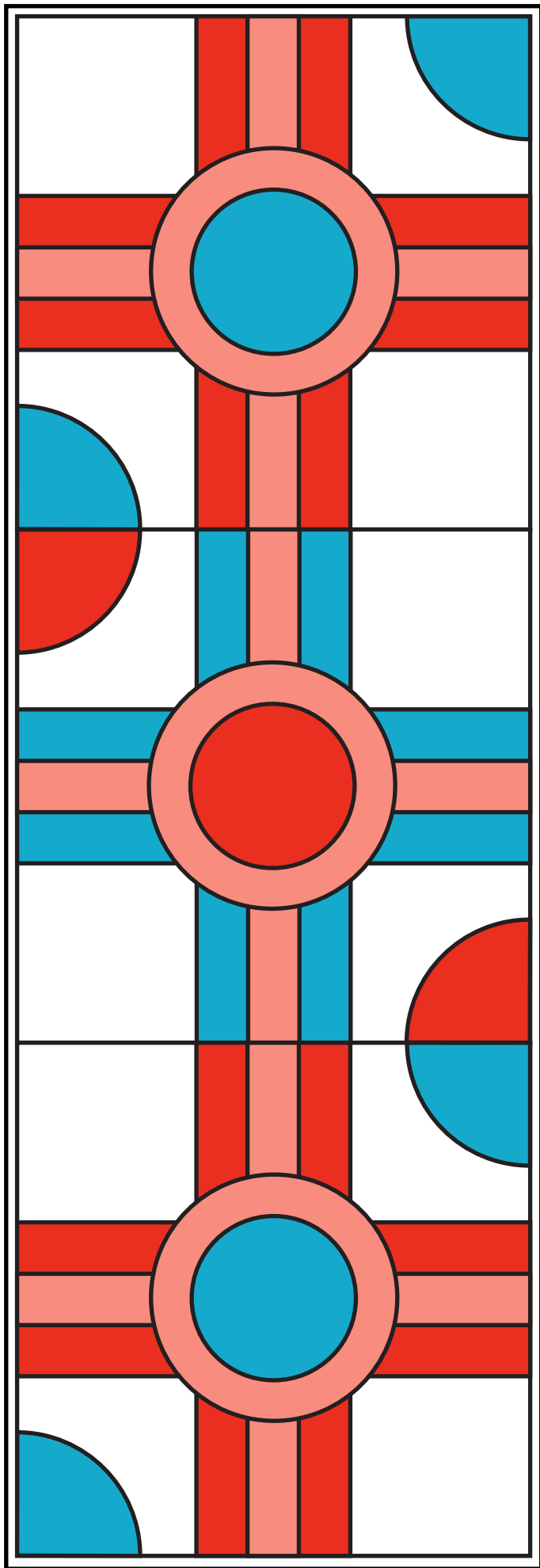
"Saucy Summer Table Runner"  
template page 2



*Solid lines are cutting lines.*

*Dashed lines show where  
the piece will be overlapped,  
or where it will be in the  
blocks seam allowance.*





Color A



Color B



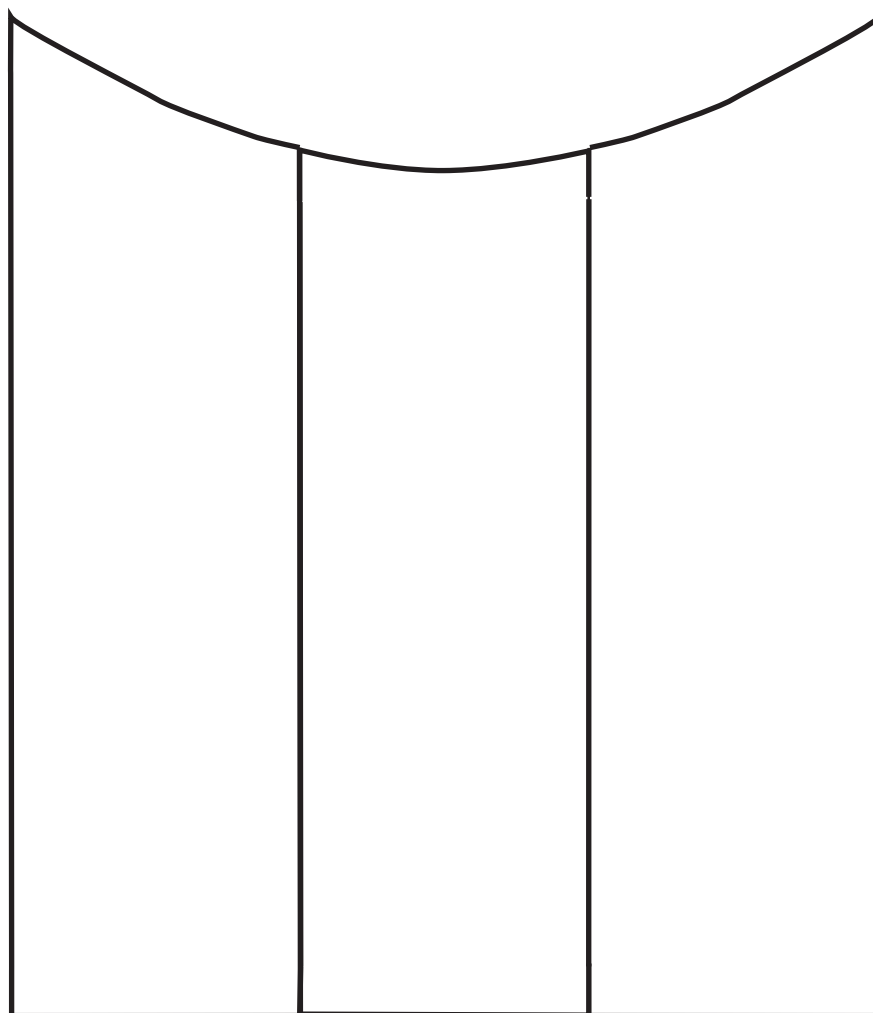
Color C

“Saucy Summer Table Runner”  
Color Placement  
to print



## “Saucy Summer Table Runner”

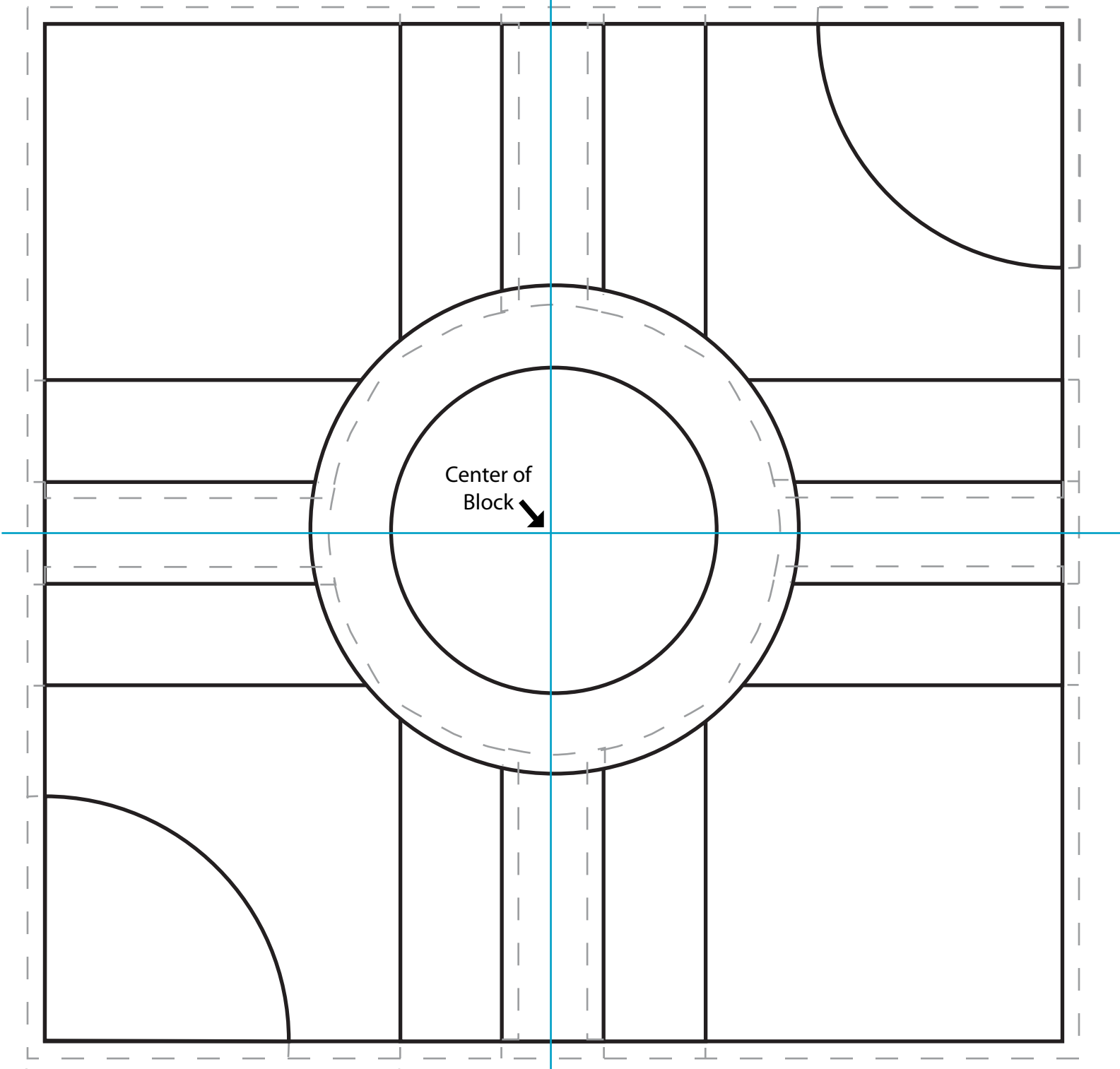
### Fusing Unit Guide for Stripe Segments



1. Place this sheet of paper underneath a Teflon non-stick pressing sheet.
2. Fuse two outer stripe pieces down to the pressing sheet first, lining up the outer edges.
3. Fuse an inner stripe piece, centered on top of the outer stripes.
4. When cool, peel the entire unit off the pressing sheet. The stripe unit is now ready for fusing to the background fabric. Repeat for all twelve units.

# "Saucy Summer Table Runner" Block Layout for Applique

(Not to scale)



5½" from edge of fabric  
to stripe unit

Stripe unit is 4½"

