


Sewing Basics - Where is My Embroidery Design?

By Nancy Fiedler

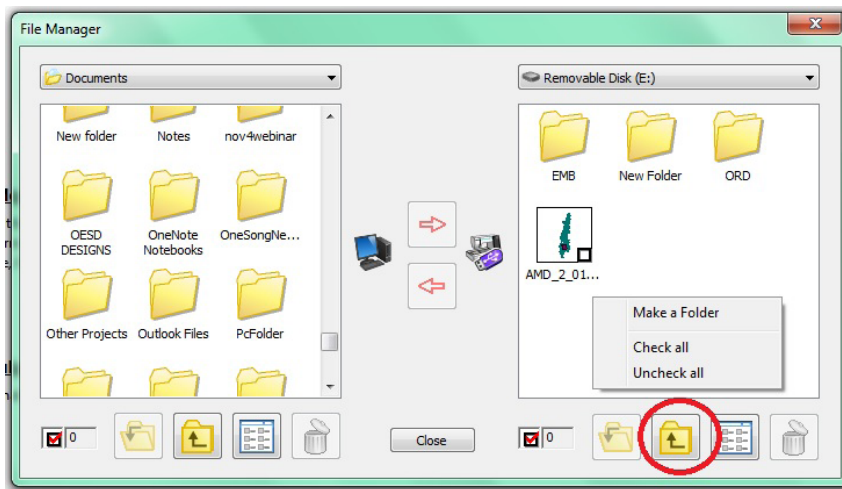
Have you ever thought you lost an embroidery design that you put on a USB stick? Here are a few tips to help you locate the “lost” design!

- All current generation of Janome/Elna embroidery machines are capable of reading embroidery designs in .jef.
- USB sticks do not need to be formatted before use. The machine and Janome software will automatically add an EMB folder when a new USB stick is found. These folders are automatically added because historically, this was the folder system early generations of Janome machines needed in order to open embroidery or stitch files. If you owned an earlier Janome embroidery machine, you will be able to insert the USB stick you had been using and your new machine will find the old files!
- The good news is the file system is not necessary to read designs! A .jef design can be placed anywhere on the USB stick and the machine will be able to read it.
- A design just placed on the USB stick will not appear on the opening page of folders, use the Up One Level button  to locate designs not in a folder.
- All designs are sorted according to hoop size. So once again, if you do not see the design, turn the pages.



Sewing Basics - Where is My Embroidery Design?

- Current generation embroidery machines can read 16GB USB sticks.
- If you like organization, you can create folders any place on the USB using Janome software or the machine.
 - Using File Manager in the software: If you do not want to create a folder inside the default EMB, just use the up one level button. Then, right click on the window to access Make a Folder. Avoid putting folders within folders.



- To create new folders using the machine: In embroidery mode, touch the Open button. Touch the New folder icon (image shown is from the MC15000, icons on the other machines may look slightly different).

