



**JANOME**

**HOLIDAY**

**Open House**

**2022**

# Re-usable Gift Bag

Using the  
AT2000D



# Supply List:

- AT2000D
- Threaded and set up 3-thread rolled hem but with extra needle and thread to change over to 4-thread overlock
- Tweezers
- Two Christmas/holiday themed fat quarters
- 2 coordinating strips of fabric 3" X WOF and 2" X 6"
- Scissors to trim threads
- Pins
- Iron, Ironing board
- Hand sewing needle
- Rotary cutter, ruler, and mat

# Cutting Prep

1. Trim the two fat quarters to be same size. You can keep the selvedge edge if you so desire.
2. Trim the 3" X WOF fabric so that one side is cut at an angle, starting at  $\frac{1}{2}$ " and ending at 3".



# Sewing Instructions

1. Set up AT2000D to do a 3-thread rolled hem
  - Right needle in/Left needle out
  - Remove Stitch Finger
  - Reduce Stitch length to “R”
  - Change Stitch Tension lever to Tight
2. Sew rolled edge down the diagonal length of WOF fabric strip
3. Set aside strip for later



# Creating Strap Closure

1. Pull out thread chain so that it's longer than the 2" X 6" fabric strip.
2. Fold the strip, right sides together and carefully place the thread chain inside the fold.
3. Serge down the length of the strip, not sewing on top of the thread chain inserted inside the fold.
4. Carefully pull the thread chain to turn the tube inside out.

*Hint: Use your tweezers to get it started.*



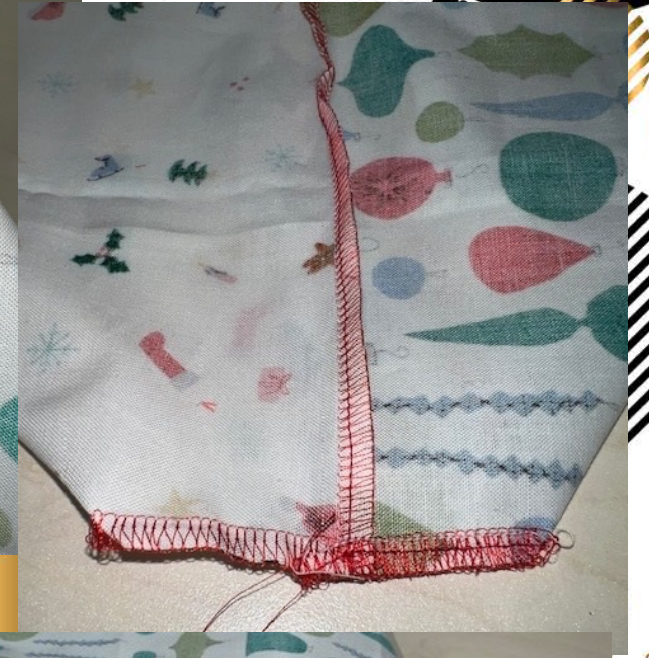
# Sewing Main Gift Bag

1. Replace left needle and thread it. Change machine settings to 4-thread overlock.
2. Placing fat quarters, right side together, serger the two long sides and one short side, leaving an opening at the top of bag.



# Create Box Corners

1. Fold corners, creating a triangle shape.
2. Serge across the corner, reinforcing your serged stitch by flipping over and sewing back over itself.
3. Repeat on second corner.





# Finishing Bag Top

1. Fold down the top of the bag opening and press  $\frac{3}{4}$ " – 1" down.
2. Mark the center of one side of the bag top.
3. Fold the hem backwards (like a blind hem) and place bag closure strap inside on each side of the center mark.
4. Pin in place and pin the rest of the top in blind hem fold.



# Creating Band Around Top of Bag

1. Place folded top under pressure foot.
2. Sew a couple of stitches, lift foot and bring thread chain around front of foot, toward knife.
3. Put foot down and continue to sew on fold, cutting off thread chain. This will keep beginning of stitch reinforced.
4. Continue to sew around top, making sure that loop closure is secure in fold.



# Finishing Top

1. Press top of bag when finished sewing.
2. Turn right side out and set aside.



# Creating Bow

1. Change Stitch Length to 5
2. Change Differential Feed to 2.0



# Sewing Gathered Bow

1. Begin sewing along straight edge of previously rolled edge diagonal strip.
2. When complete, find needle threads and gently pull, creating tighter gathers.



# Bow Continued

- Once gathering is complete to your desired amount, begin rolling the bow, starting at the narrower edge.
- Hand sew back side of bow to hold it together and then hand sew to the top of the bag, opposite of the opening.



# Wrap It Up!!

1. Insert gift in gift box to give it shape.
2. Fold corners underneath and wrap loop around bow to secure.

