



JANOME

HOLIDAY

Open House

2022

Thread Catcher and Pin Cushion



Supply List:

- Janome CM17
- Feet you will need: - O foot (with or without guide), Zipper foot, ASR foot with ASR-QO foot attached
- 4 different fabrics – one for the pin cushion, one for the hinge, one for the inner bag and one for the outer bag
- 1 – 8"x15" piece of batting. Use a thin cotton or poly, do not use a high loft batting
- 1 – ½" width, 18" long piece of boning, or plastic shipping strap from a box. You could also use a one-liter soda bottle cut to ½"x 18"
- 1 ½ cups of crushed walnut
- 1 piece of 8 ½"x 11" paper...printer paper is fine
- Tape for paper
- Quilting thread (your choice of color and material. You can use polyester, metallic, cotton, etc.)
- Bobbin thread – if used for quilting, use the same thread as you used for the top thread
- Sewing thread (wind a bobbin with the same sewing thread). The color is your choice
- Safety pins or basting spray
- Scissors to trim threads
- Rotary cutter, ruler, and mat
- Pins
- Iron, Ironing board

General Instructions

- Instructions

1) Cut the fabric as follows:

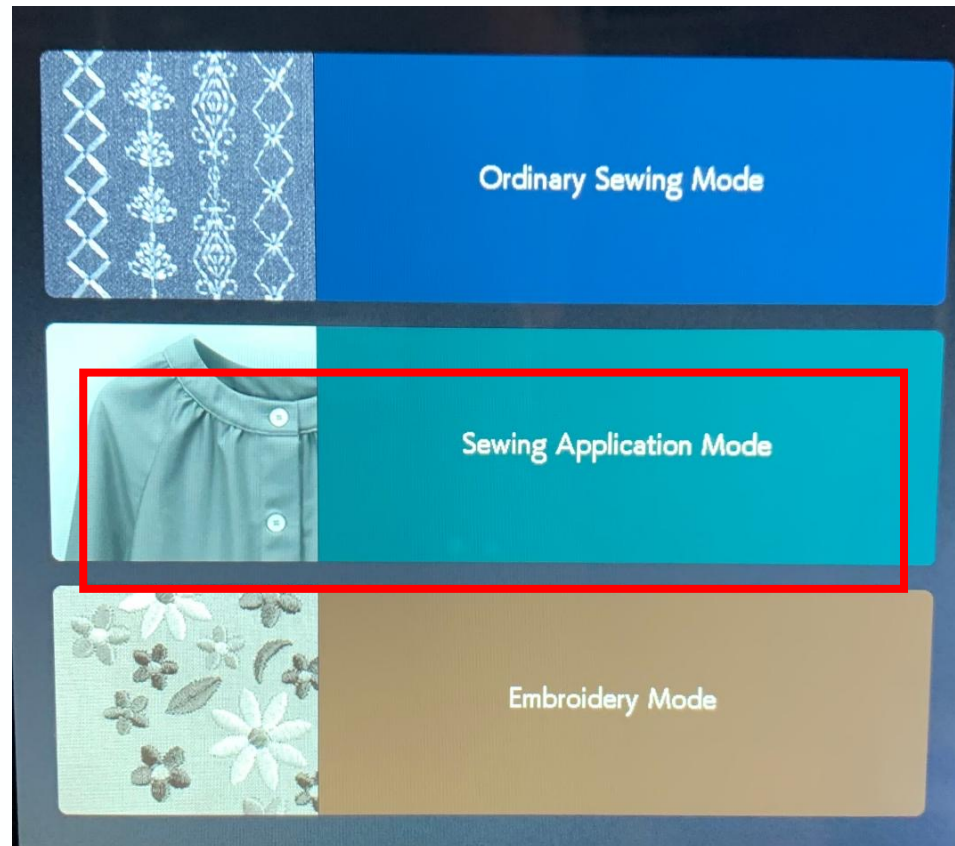
- One piece 4 ½" x 8" for hinge
- One piece 9" x 16" for bag lining
- One piece 9" x 16" for outer bag
- One piece 7" x 8" for pin cushion

- These can all be the same fabrics or completely different.
The choice is yours!



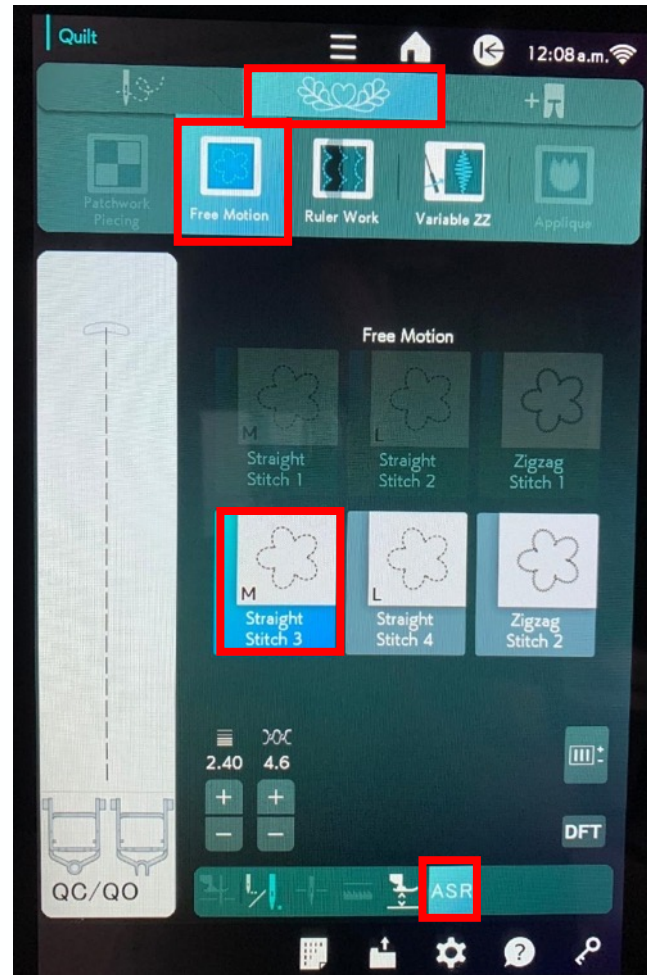
Quilting Instructions

- 1) Wind a bobbin with your chosen top thread and place in bobbin case. Thread your machine with your chosen top quilting thread
- 2) Touch the Sewing Application Mode Quilt from the home screen.



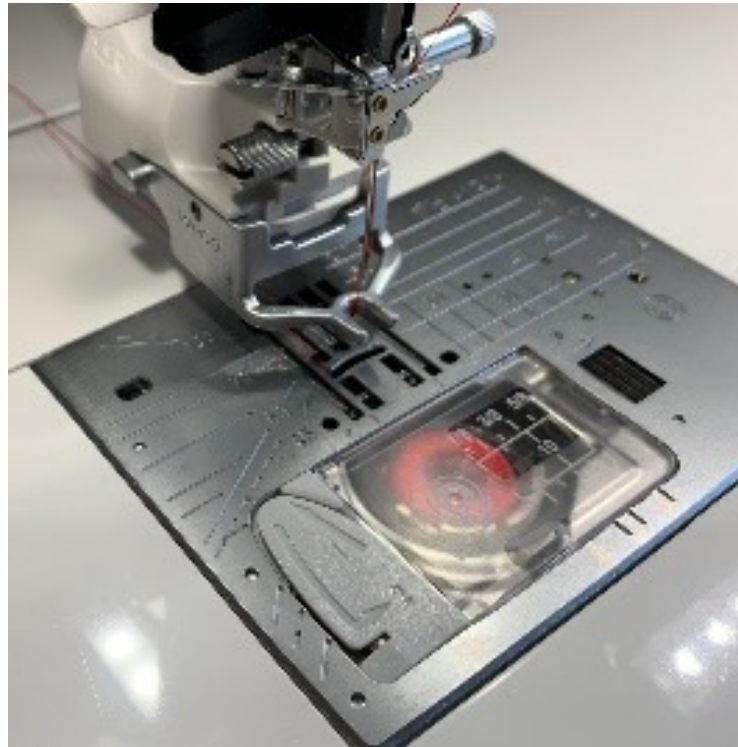
Quilting Instructions

- Choose the Quilt category, then Free Motion, then Straight Stitch 3, then turn on the ASR



Quilting Instructions

- Attach the ASR foot and don't forget to plug it in the back of your machine. You may use any foot you like such as the open toe foot, ruler foot, etc. depending on your chosen design. For this example, use the open toe foot(ASR-QO)



Quilting Instructions

- Centering the batting as best you can, attach the batting to the wrong side of the outer thread catcher fabric. You may use safety pins or spray baste. The batting will be smaller to reduce bulk in the seams. You should have roughly a ½” piece of fabric showing all around.



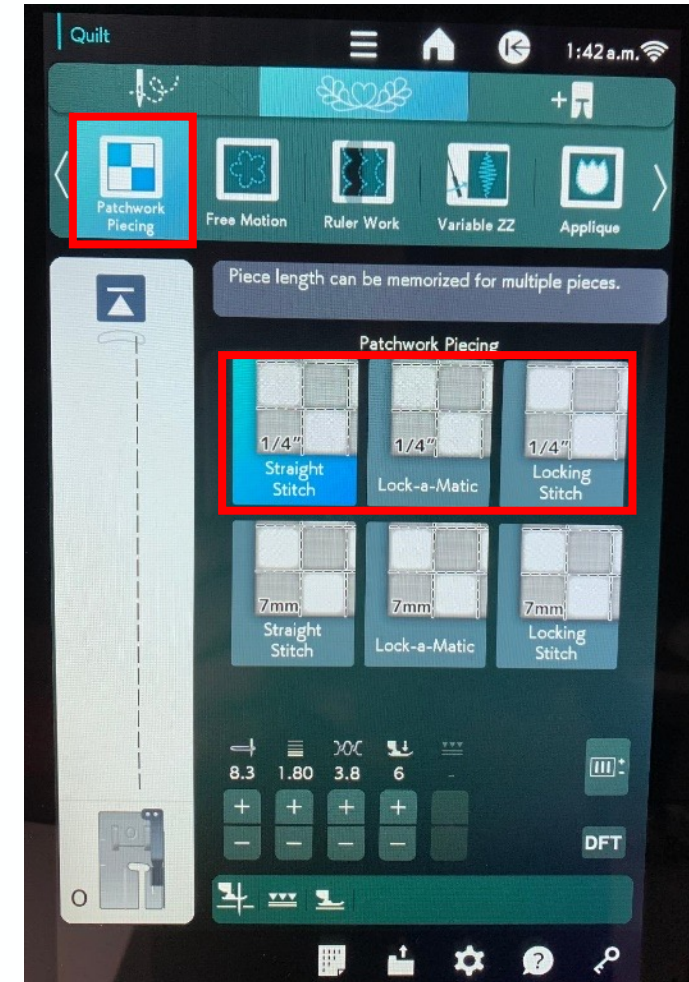
Quilting Instructions

- 1) Turn the fabric with batting to the front side and quilt as desired. Don't quilt into the seams. Only quilt where the batting is located. You may mark on the front of the fabric where the batting is so you have a better reference. You will be quilting without a backing fabric which is perfectly fine.
 - **Note:** If you've never free motion quilted, keep your designs very simple and basic. The example used a simple meandering design. If you have experience free motion quilting you may of course get as complicated with the designs as you wish.
 - Notice how the quilting on the back doesn't extend into the seams.
 - When finished quilting this piece, set it aside for now.



Sewing Instructions

- 1) Wind a bobbin with your chosen sewing thread. Thread your machine. You may also use the thread you quilted with if you wish but make sure you use a thread that will blend in with your fabrics
- 2) Remove the ASR foot and attach the O foot (with or without guide)
- 3) On your screen you should still be in the Sewing Application Mode
- 4) Touch Patchwork piecing and choose one of the three ¼" stitches.



Creating the Hinge

- 1) Take the fabric for the hinge and fold it right-sides together. Pin if you desire. Using a $\frac{1}{4}$ " seam allowance, sew each side and along the top for 1" on each side leaving a 2" opening for turning.
 - **Please note:** black thread was used for contrast so the sewing could be seen but you may want to use a color that will blend in with your fabrics



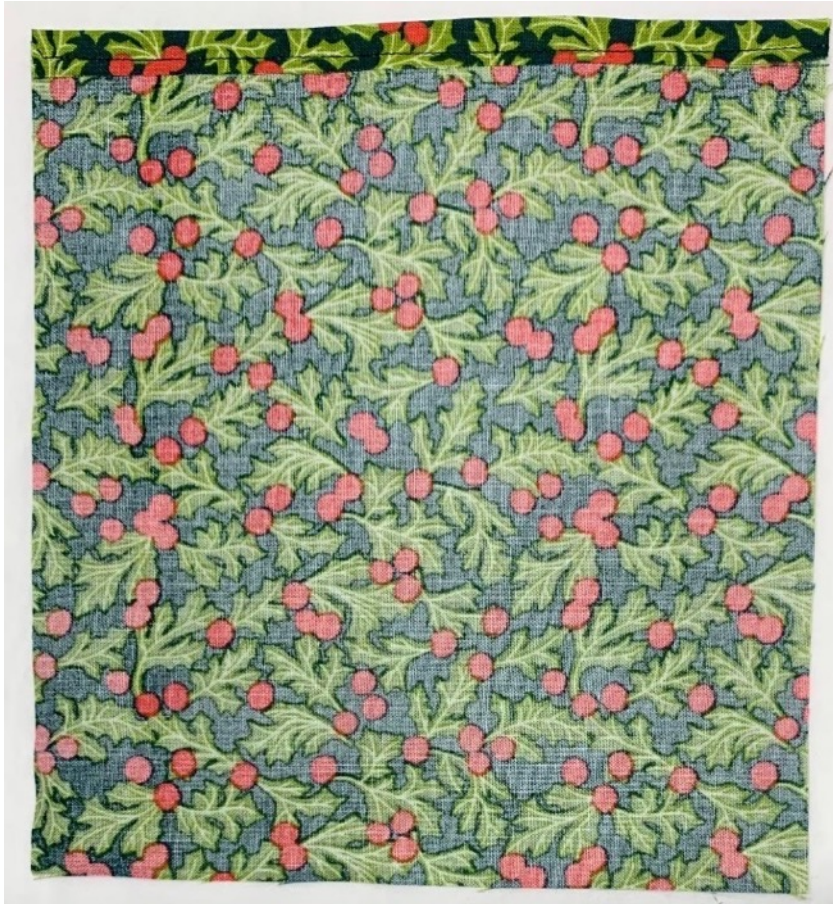
Creating the Hinge

- Turn the fabric inside out and use a tool to poke out the corners. Press this piece (let the raw opening roll to the inside – there is no need to sew the opening shut as it will be encased in the pin cushion section in a later step). Set this piece aside



Creating the Pin Cushion

- 1) Press in $\frac{3}{8}$ " (wrong sides together) on one 8" side of the pin cushion fabric then stitch $\frac{1}{4}$ " away from the pressed edge to create a finished edge. Don't worry about the raw edge as it will be encased in the finished seam allowance



Creating the Pin Cushion

- Flip the pin cushion fabric over so you can see the right side. Place the hinge section centered on the right side of the raw edge. Make sure the unsewn opening of the hinge is against the raw edge.



Creating the Pin Cushion

- Fold the left side of the pin cushion fabric over to the right side, raw edges together covering the hinge section. Pin if you desire. Sew down the right side long raw edge, pivot, then sew the bottom short raw edge. The hinge should have been sewn in on the long right side

Note: Do not sew the finished edge across the top. You need this opening to turn this unit right side out.



Creating the Pin Cushion

- Turn inside out through the finished edge, poke out the corners, and press flat



Creating the Thread Catcher

- **NOTE:** You will make the liner and outer bag sections exactly the same way. The only difference is the outer bag will be turned inside out. The liner bag will not.

We'll start with the lining bag first:

- 1) Fold in $\frac{3}{8}$ " on one long 16" edge of your chosen lining fabric and press. Sew $\frac{1}{4}$ " away from the finished edge
- 2) Just as you did with the pin cushion section, make sure the right side is up facing you and fold the lining right sides together and stitch down the right side and bottom raw edges with a $\frac{1}{4}$ " seam.



Creating the Thread Catcher

- After sewing, turn the liner so the finished edge is toward you, and the seam you just sewed is centered and facing up. Push the bottom section in so the bottom of the liner forms points. Keep working the points so they are even. Then using an iron, press them down. Don't fuss too much with the points as you're going to cut them off later. Just get them as pointy as you can.



Creating the Thread Catcher

- Draw a line 6 ½" down from the finished edge. Flip this section over and do the same on the other side. Remember, you have two pointy sections.



Creating the Thread Catcher

- 1) Sew directly on your drawn lines.
 - **Note: Do not** sew these sections together as one unit. You have two pointy sections and each must be sewn separately. After sewing trim $\frac{1}{4}$ " away from each of the two sewn lines



Creating the Thread Catcher

- Place your hand inside the liner and push the bottom out so you have a standing bag. Remember, do not turn this lining bag inside out. The wrong side will be facing out.
- With the outer bag fabric (the fabric with the quilting) construct the outer bag exactly as you did with the liner. However, the outer bag quilting section will be turned inside out so the right side faces out.



- Pin the hinge to the inside back of the outer bag (the side with the seam) measuring down $\frac{1}{2}$ " from the finished edge of the bag



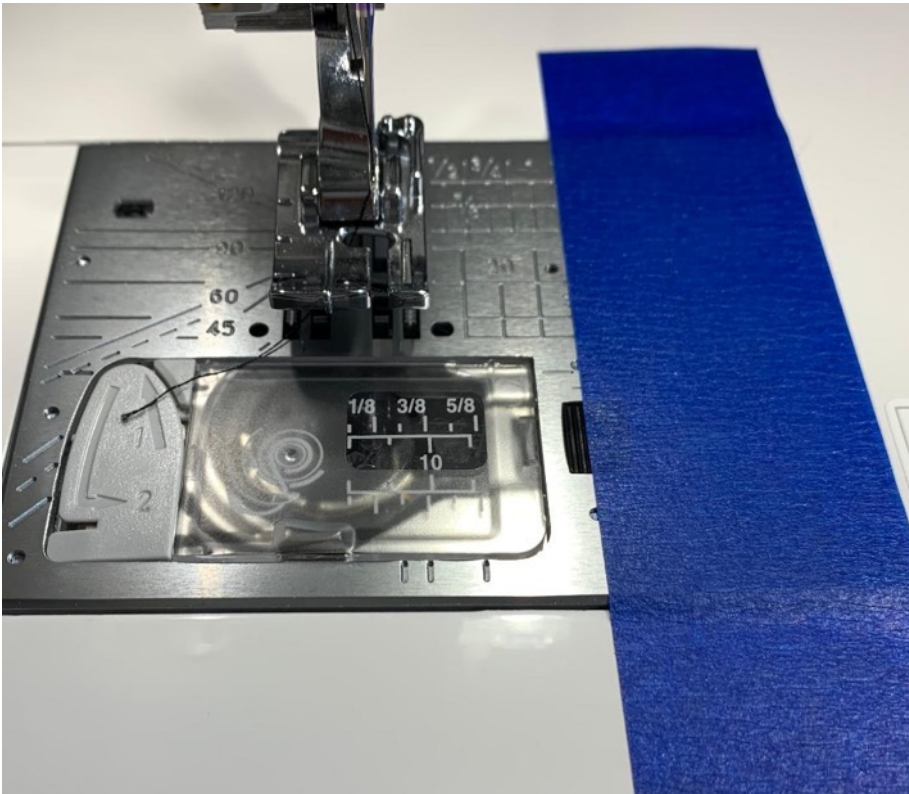
Putting it all together

- Stitch the hinge to the bag stitching on the seam of the finished edge of the bag. You may flip the entire unit over if that makes it easier to see the seam just be careful and not catch the opposite side of the bag in your stitching.
- Slide the liner inside the outer bag making sure the inner bag is not right side out. When placed together you should not see the wrong side of the fabrics.
- Make sure you match the back seam on both the liner and outer bag. Also, the finished edges should line up. You may pin the liner and outer bag together if you desire



Putting it all together

- Sew down 1" from the finished edge of the bag all the way around. You may mark this but make sure the mark is removeable. You can also use the markings on the bobbin plate or you may use painters tape to mark 1" away from the needle if that helps.



Putting it all together

- Following the $\frac{1}{4}$ " stitch line at the top of the bag, sew right on that stitching leaving a $1\frac{1}{2}$ " opening to insert the boning or strapping. Slide the boning into the opening, slide it all the way around the pocket you created, and tuck in the end. Sew the $1\frac{1}{2}$ " opening closed backstitching as necessary



Create fill hole

- Sew in $1\frac{1}{2}$ " on each end of the pin cushion opening stitching directly on the line of previous stitching that created the finished edge. You want to leave an opening of approximately $\frac{3}{4}$ " in the center



Fill Cushion with Crushed Walnuts

- Create a funnel with the paper and tape and insert the narrow end into the opening you just created in the pin cushion.
- Fill the pin cushion with crushed walnuts but not all the way. You need to leave a space to sew the pin cushion closed.
- Once you attach the zipper foot, sew the opening closed and you're done!

