



SINML Bonnet



THIS PATTERN AND IT'S ACCOMPANY TUTORIAL ARE
THE INTELLECTUAL PROPERTY OF:

Sewing In No Mans Land

AND MAY NOT BE SOLD OR REDISTRIBUTED IN ANY
FORM WITH OUT WRITTEN PERMISSION

RECOMMENDED FABRICS:

COTTON, LINEN, LAWNING, POPLIN,
CHAMBRAY

NOT SUITABLE FOR JERSEY OR FABRIC
WITH LOTS OF STRETCH

NOTIONS:

HOME MADE OR STORE BOUGH
BIAS TAPE

SEAM ALLOWANCES NOTE:

UNLESS SPECIFICALLY NOTED ALL SEAM ALLOWANCES FOR THIS DRESS ARE 3/8

SEW WHAT CLUB SIZING

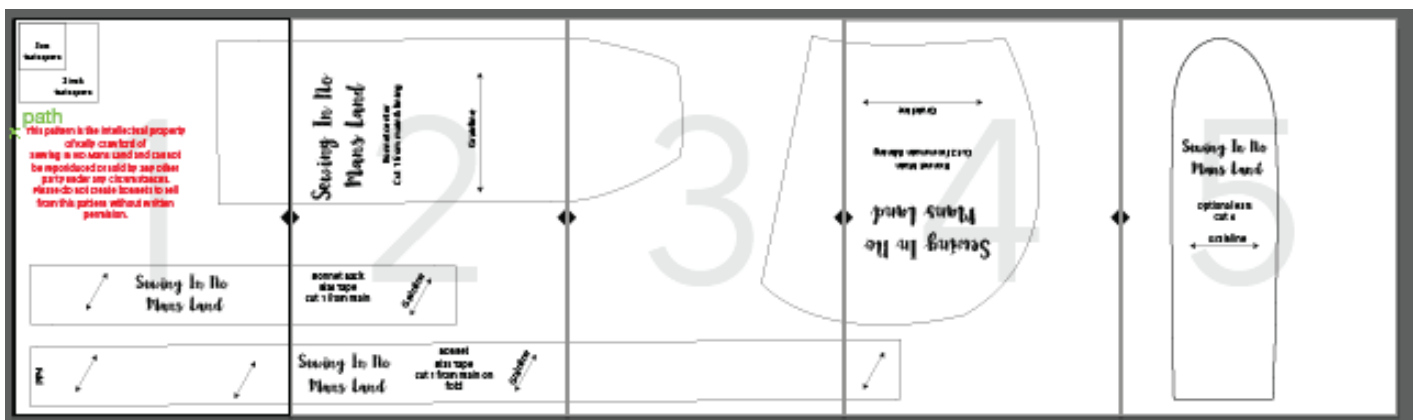
THIS PATTERN IS ONE SIZE FITS MOST 2T-6

FABRIC REQUIREMENTS

BONNET MAIN: 1/2 YARD

BONNET LINING: 1/2 YARD

BIAS TAPE: 2 YARD'S



Step One

Lay two of your ears right sides together. Stitch from the bottom left up and over the arch down to the bottom right. Be sure to lock stitch at the start and end. (Flap is folded down in this shot so you can see the right sides together, it of course would not be laid that way when stitching).

Cut several small clips over the arch, being careful not to clip your stitching. This will help your ears lay MUCH flatter, please do not skip it. Once clipped turn right side out and press well. Repeat with second set of ear pieces.



Step Two

Create a small fold at the base of the ear. The size is personal preference, but a bit larger will make it more noticable.



Step Four

About two inches back on the curve of the bonnet pin the ears right sides together with each of the bonnet side pieces (one on each side of course).



Step Five

With right sides together, line up the raw edges of the large curve of the bonnet side piece with the raw edge of the bonnet center. The shorter, more tapered end of the bonnet center goes in the back. When you come to where you pinned your ear remove the pin holding the ear in place, sandwich between bonnet side and center and pin. Stich from bonnet front to bonnet back. Again clip all around the curve. Repeat with second Bonnet side piece and the remaining raw edge of the bonnet center.



Step Six

Turn right side out and press seams. Repeat this process with the bonnet lining pieces, of course leaving out the ear attachment. When done slide your lining into your bonnet main so that wrong sides are together and right sides are facing out. If you have any extra areas that are not flush, simply trim, it is not a big deal.



Step Seven

Using your home made or store bought bias tape, enclose both the bonnet main and lining at the bottom of the bonnet, all the way around. Pinning then topstitching in place. Trim any excess. Find the center top of your bonnet main and mark with a pin. Find the center of your longer piece of bias tape and pin. Line these two pins up and, again enclosing both main and lining, pin OUT from the center on both sides, enclosing the raw ends of the bias tape you previously attached. Stitch ALLLLL the way to the end of the bias tape. Tie ends of the bias tape in knots.



ALL DONE!

We of course love to see what you make with this pattern! Please tag Sewing In No Mans Land if you get the opportunity to post. Please note that this pattern may not be used to create bonnets for resale with out written permission. Thank you!



3cm
test square

2 inch
test square

This pattern is the intellectual property
of Kelly Crawford of
Sewing In No Mans Land and cannot
be reproduced or sold by any other
party under any circumstances.
Limited quantities of bonnet may be
produced and sold with out a licensed
copy. Bulk creation is prohibited.



*Sewing In No
Mans Land*

Fold



Sewing In No Mans Land

Bonnet center
Cut 1 from main & lining

Grainline



Bonnet Back
Bias Tape
cut 1 from main

Grainline

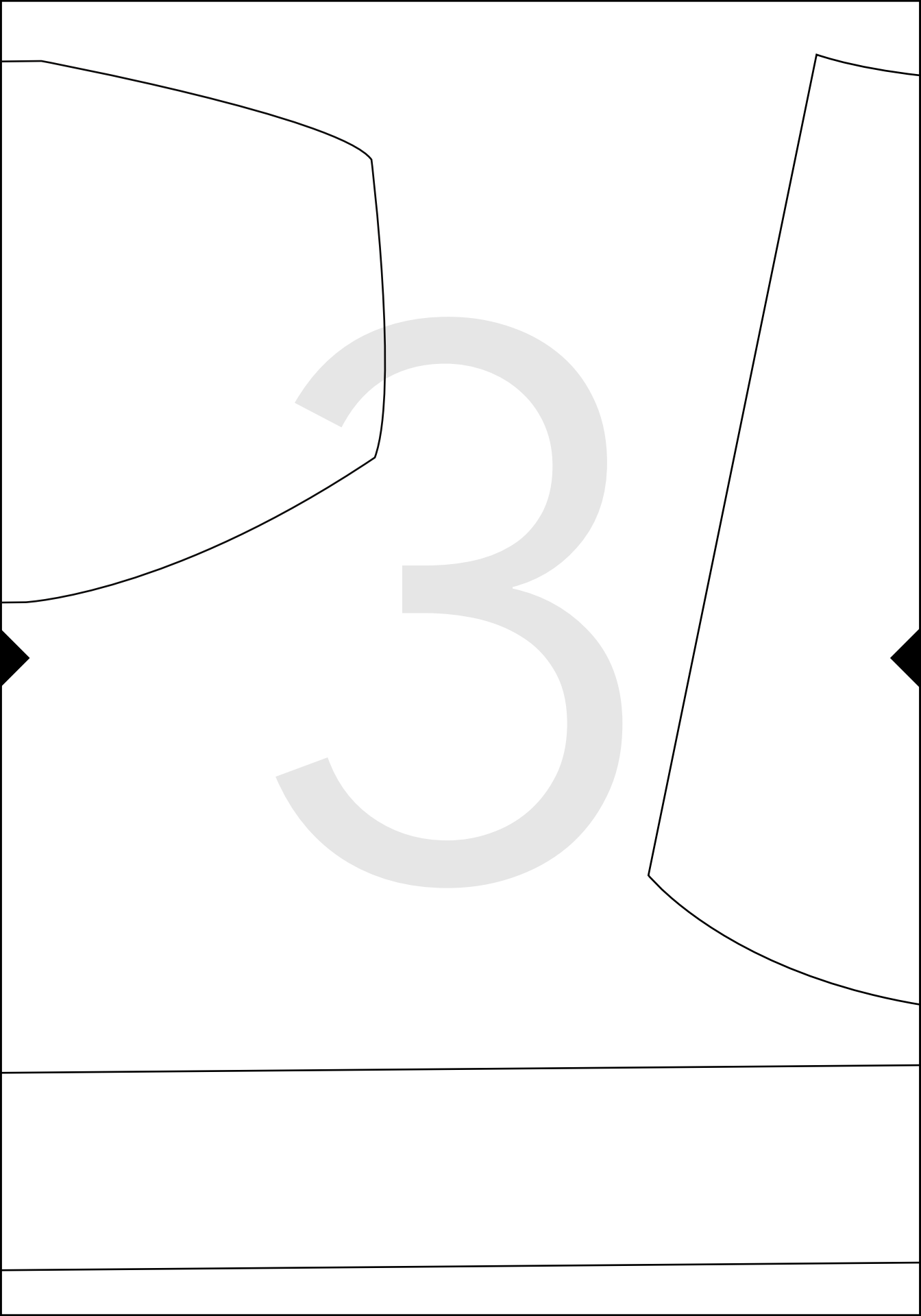


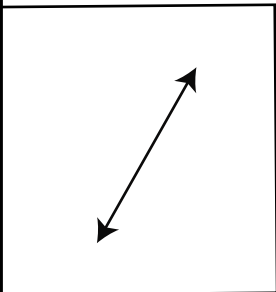
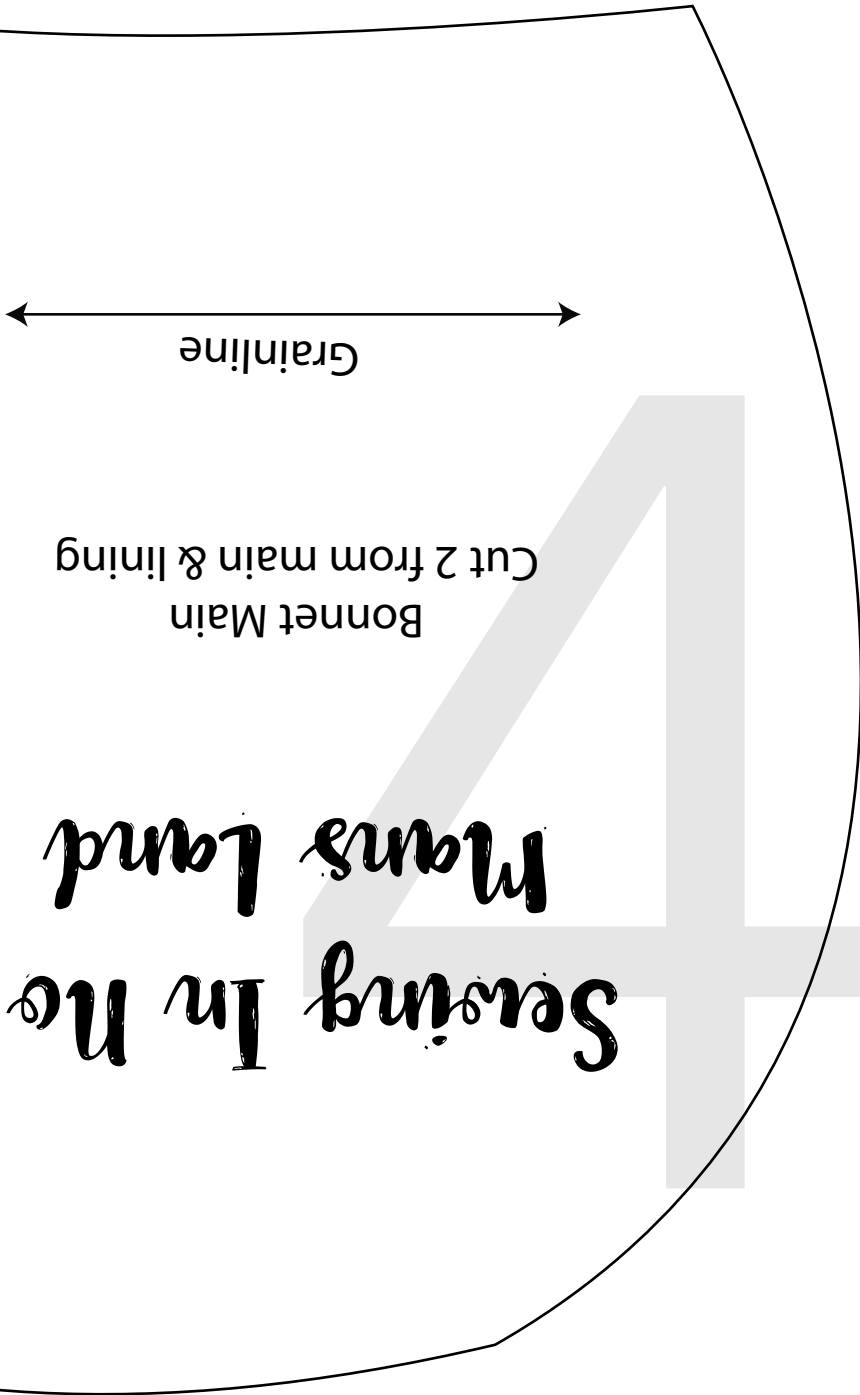
Sewing In No Mans Land

Bonnet
Bias Tape
cut 1 from main on
fold

Grainline









*Sewing In No
Mans Land*

Optional ears
Cut 4

Grainline
↔