

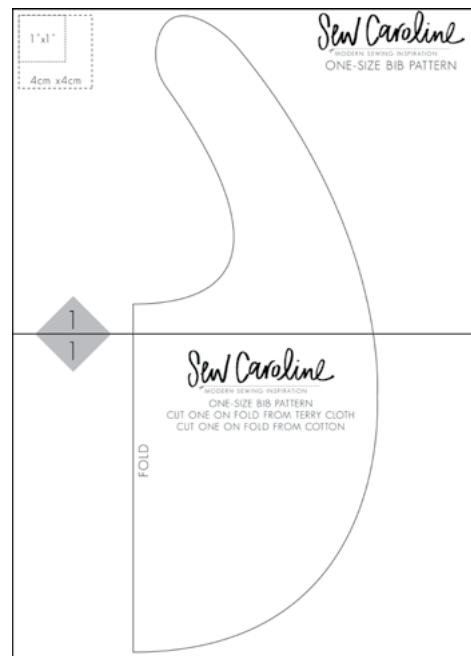
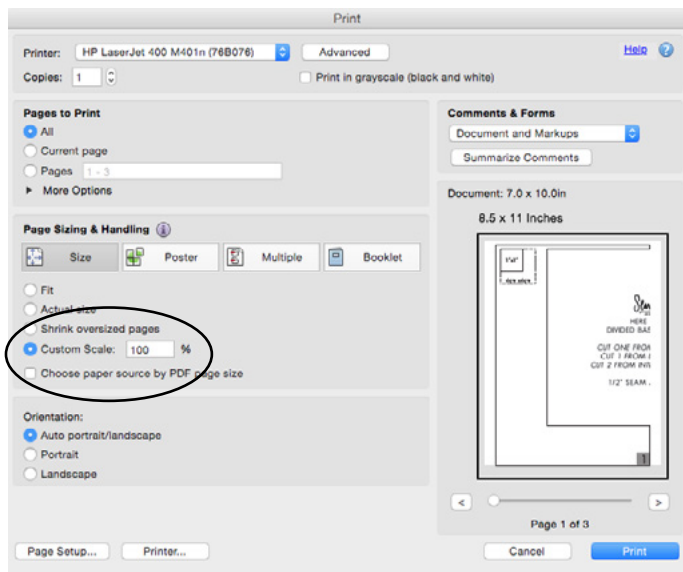
ONE-SIZE BIB PATTERN



PRINT AND ASSEMBLE THE PDF PATTERN

USING STANDARD 8.5" X 11" (OR A4) PAPER, PRINT THE PATTERN PIECES IN ADOBE READER. IF YOU DO NOT HAVE THIS PROGRAM, PLEASE DOWNLOAD IT FOR FREE USING THIS LINK: [HTTPS://GET.ADOBE.COM/READER/](https://get.adobe.com/reader/) BE SURE TO SELECT "NO PAGE SCALING" OR "100%" WHEN PRINTING SO THE PATTERN PIECES WILL PRINT TRUE TO SIZE (SEE FIGURE BELOW). YOU CAN CHECK YOUR PAGE SCALING ON THE FIRST PATTERN PIECE PAGE WITH THE 1" X 1" OR 5 CM X 5 CM BOXES (SEE FIGURE BELOW).

TRIM AROUND THE EDGES OF THE PAGES USING THE BLACK LINES AS A GUIDE AND TAPE THE PATTERN PIECES TOGETHER BY ALIGNING THE NUMBERED BOXES IN THE CORNERS. I LIKE TO ONLY TRIM ALONG THE TOP AND LEFT SIDE OF EACH PAGE FOR EASIER TAPING (SEE FIGURE ON PAGE 3 FOR LAYOUT GUIDE).



MATERIALS NEEDED FOR ONE-SIZE BIB

- 3/8 YARD OR 1 FAT QUARTER OF COTTON
- 3/8 YARD OR 1 FAT QUARTER OF TERRY CLOTH or TRY REUSING A TOWEL.
- [ONE KAM SNAP SET + KAM SNAP TOOL](#)

CUTTING INSTRUCTIONS FOR PATCHWORK PILLOW

- FROM THE TEMPLATE, CUT ONE FROM THE COTTON AND ONE FROM THE TERRY CLOTH

ONE-SIZE BIB PATTERN

SEWING INSTRUCTIONS FOR ONE-SIZE BIB

1. ALIGN THE TWO PATTERN PIECES TOGETHER, RIGHT SIDES FACING. PIN AND SEW (3/8" SEAM ALLOWANCE) AROUND ALL EDGES, LEAVING ABOUT 3" OPEN ALONG THE BOTTOM EDGE FOR TURNING.



2. TURN THE BIB TO THE RIGHT SIDE THROUGH THE OPENING YOU LEFT UNSEWN. USE THE BLUNT END OF A PEN OR A TURNING TOOL TO BE SURE THE NECK STRAPS ARE TURNED COMPLETELY.
3. TOP STITCH AT 1/4" ALL THE WAY AROUND THE EDGES OF THE BIB.
4. INSERT THE KAM SNAPS PER MANUFACTURERS INSTRUCTIONS.



TIP: TO INCREASE WEARABILITY, ADD ANOTHER SNAP SET ABOUT ONE INCH FROM THE FIRST SO IT CAN BE SHORTENED OR LENGTHENED!

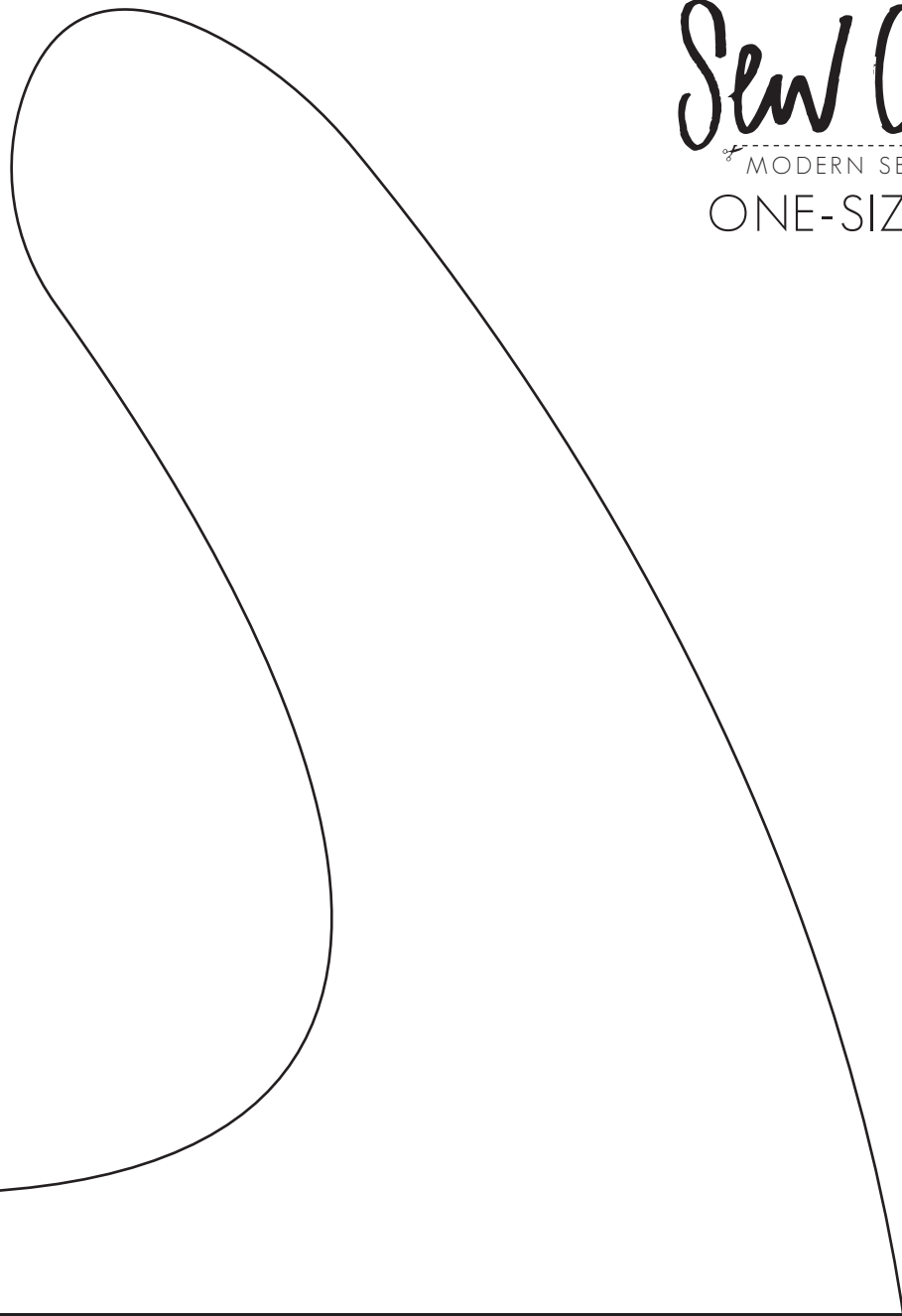
1" x 1"

4cm x 4cm

Sew Caroline

✂ MODERN SEWING INSPIRATION

ONE-SIZE BIB PATTERN



1

1

Sew Caroline

MODERN SEWING INSPIRATION

ONE-SIZE BIB PATTERN
CUT ONE ON FOLD FROM TERRY CLOTH
CUT ONE ON FOLD FROM COTTON

FOLD