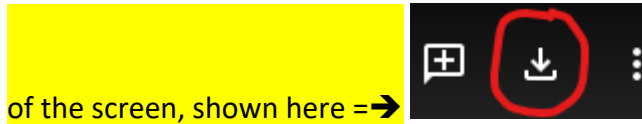


Instructions for downloading and installing the 32bit/64bit version of the MC11k/SE USB driver and Tools software for Windows 10 and 64-bit PCs:

****Please do not install your MC11K Tools from the CD. If you currently have MC11K Tools/PC Folder Tools installed, please go into your Control Panel>Add/Remove Programs OR Programs and Features and **uninstall**.

After clicking on the link below, you will need to click on the download arrow found in the upper right corner



After the file has downloaded, you will need to unzip it:

https://drive.google.com/file/d/1HwKTa8_Uo6RFaKqSsRt7wclZy-O5yDnc/view?usp=sharing

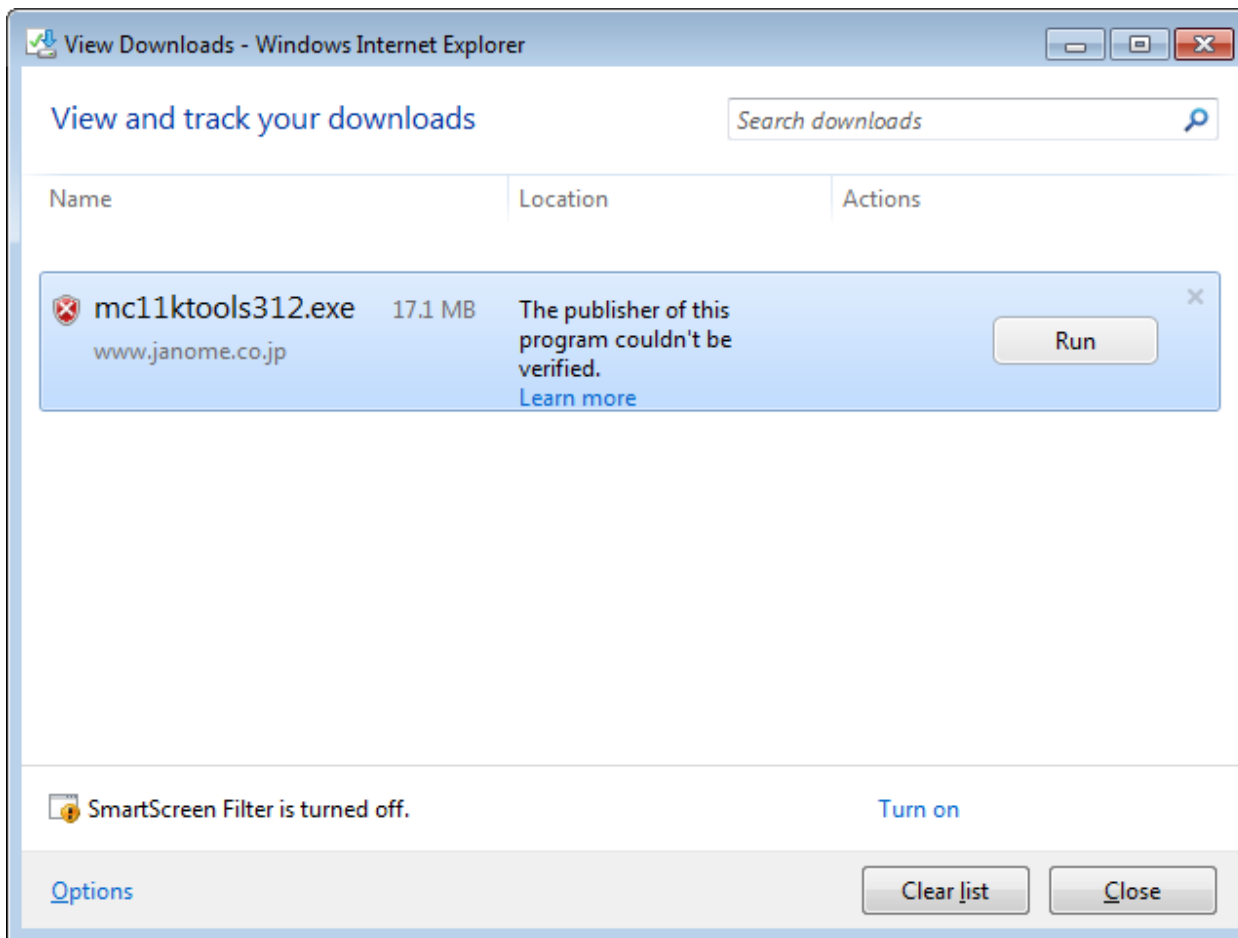
You may possibly see a warning “The publisher of this program couldn’t be verified” ...please proceed anyway.

At this point I suggest that you temporarily disable the firewall, this way the USB driver will not be blocked from being installed.

An icon as the one below will be on your desktop, please double-click on it to start the installation, or the file may be in your downloads folder, if so, choose Run.

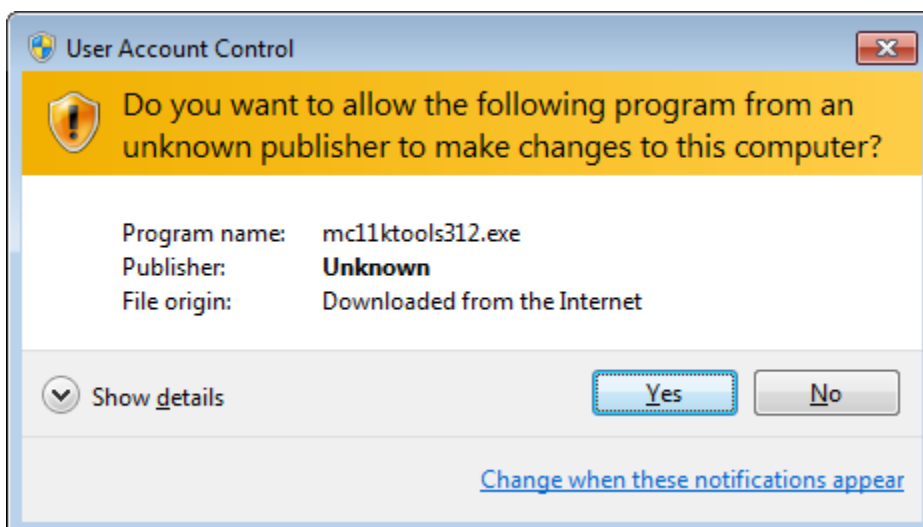


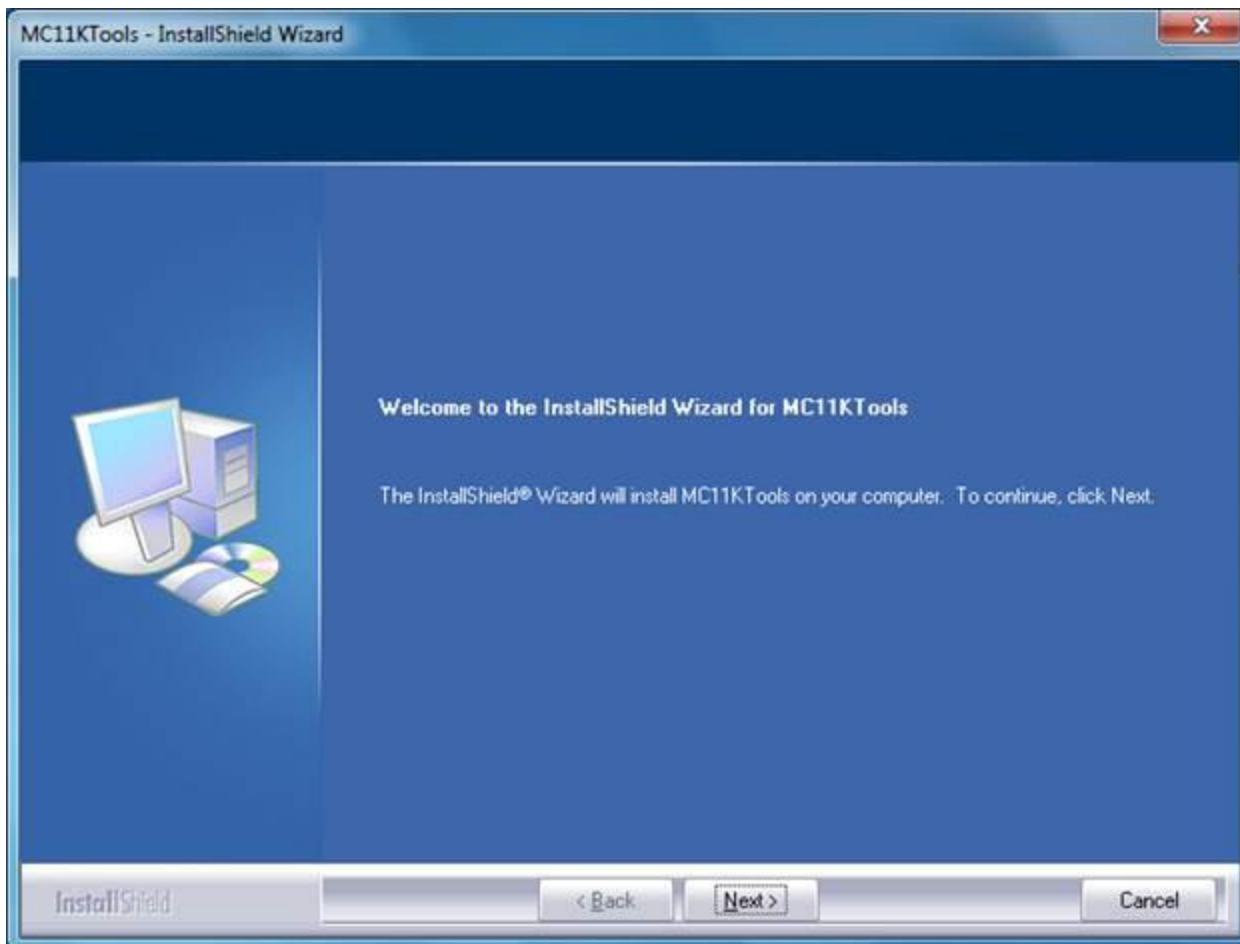
or



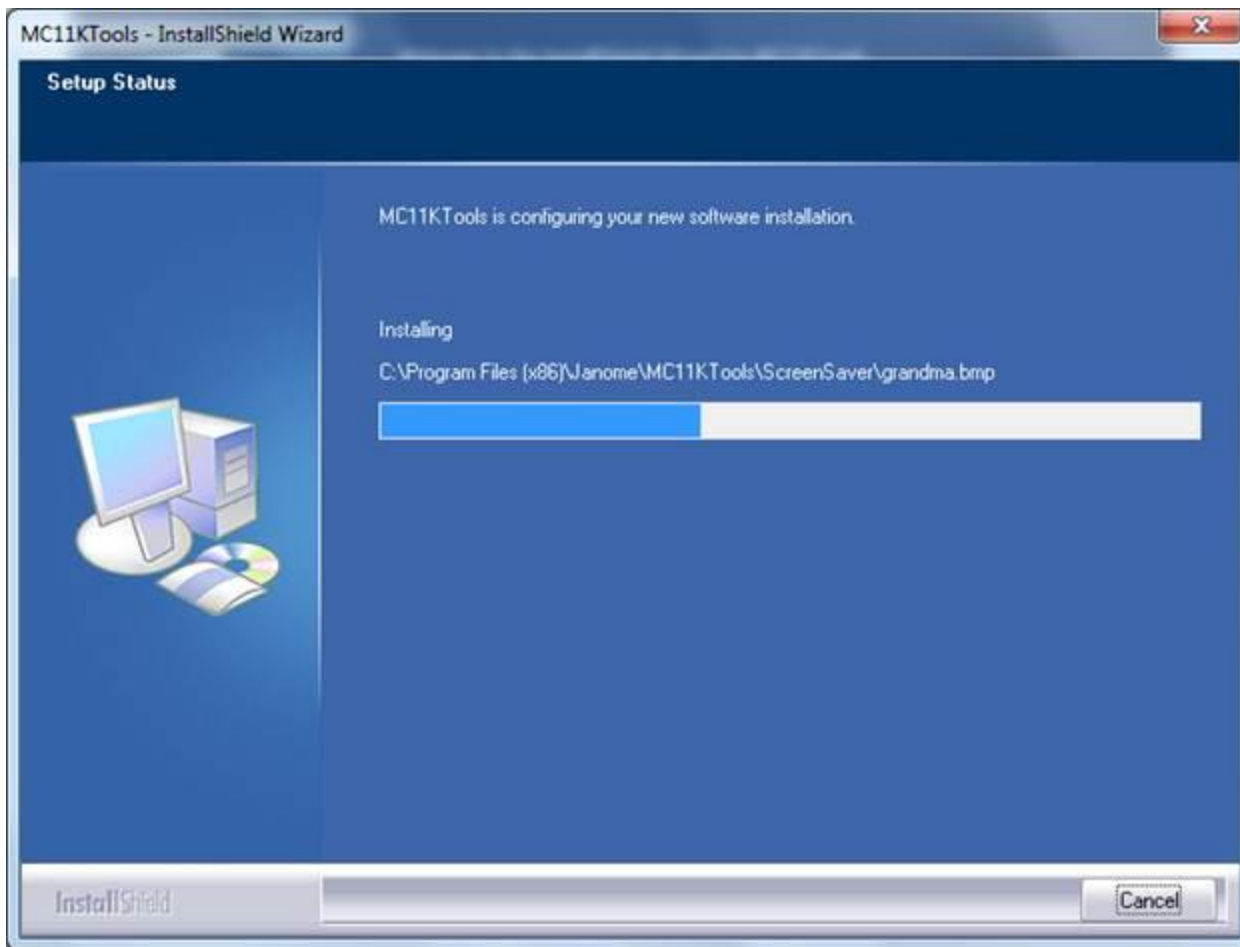
If the User Account Control is activated in your computer, you may receive the message....

“Do you want to allow the following program from an unknown publisher to make changes to your computer?” click Yes





Follow the screen prompts to install.



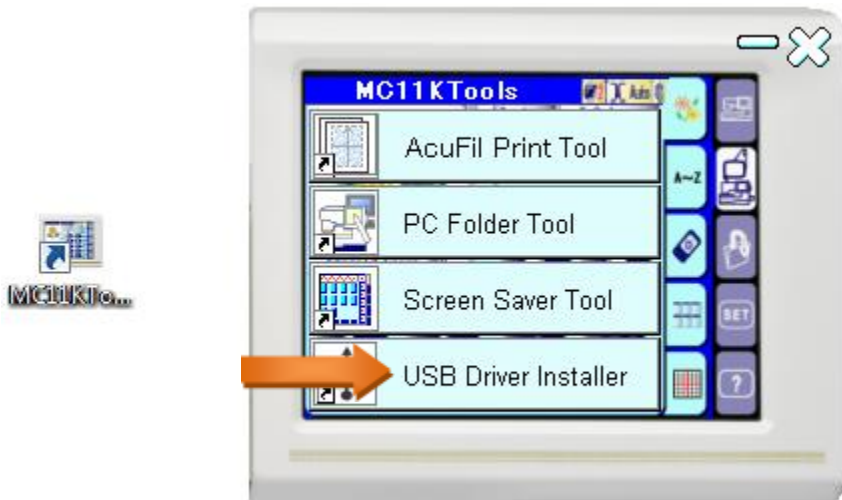
Click “finish” when prompted.

Return back to your desktop, you will have the icon MC11kTools as shown below, please double-click it to open.



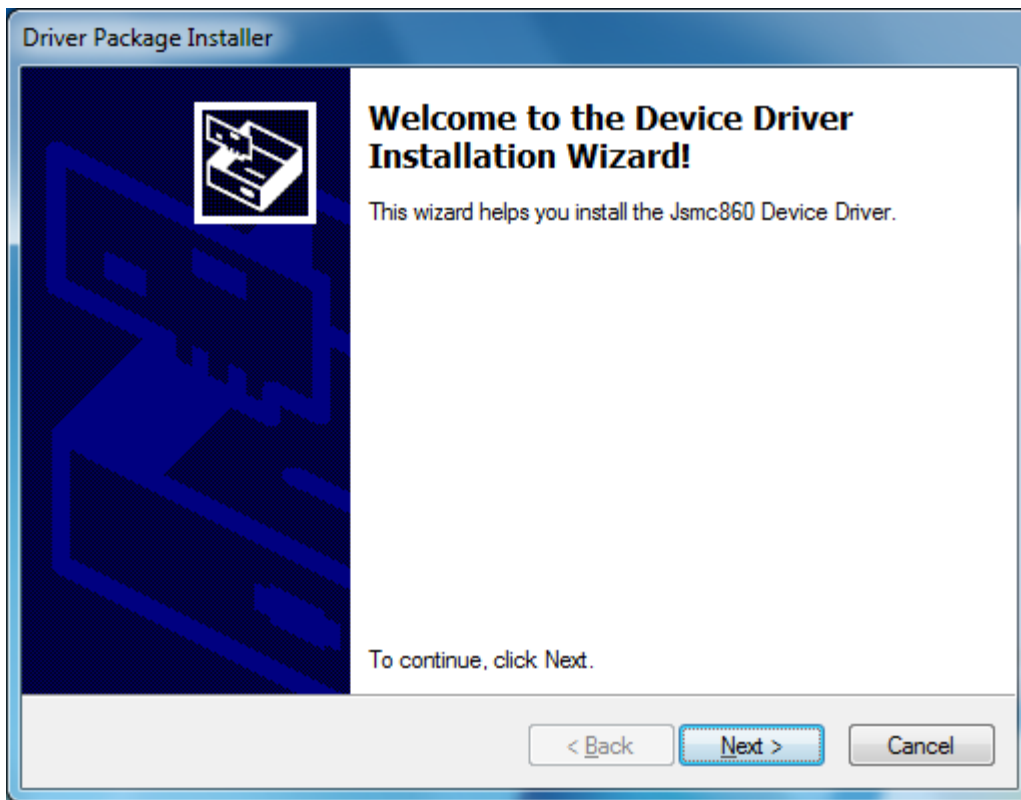
You will see the interface similar as shown below.

At this point you can attach your MC11000 to your computer via USB cord, then power on the MC11000 power...if you get a “new hardware wizard” starting, you can cancel it and proceed below:

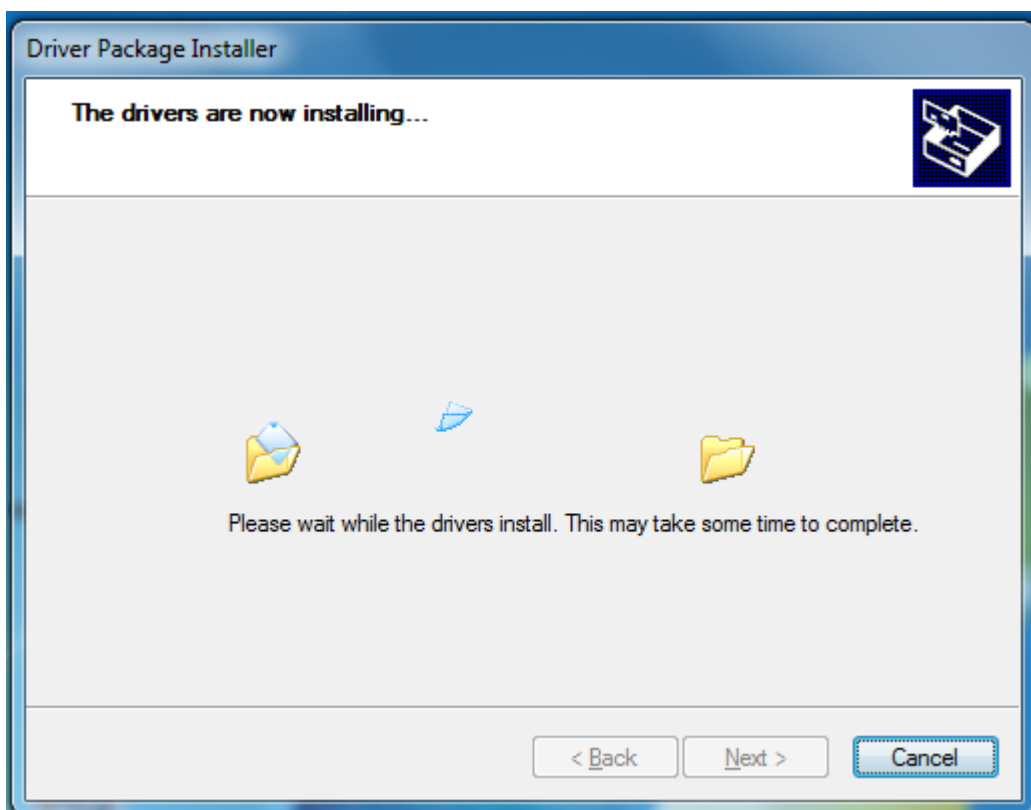


Please note that if your Memory Craft 11000 is version 1.31 or earlier, you will not be able to apply the AcuFil Print Tool to your embroidery machine. This function is only for MC11000SE versions 2 or 3.

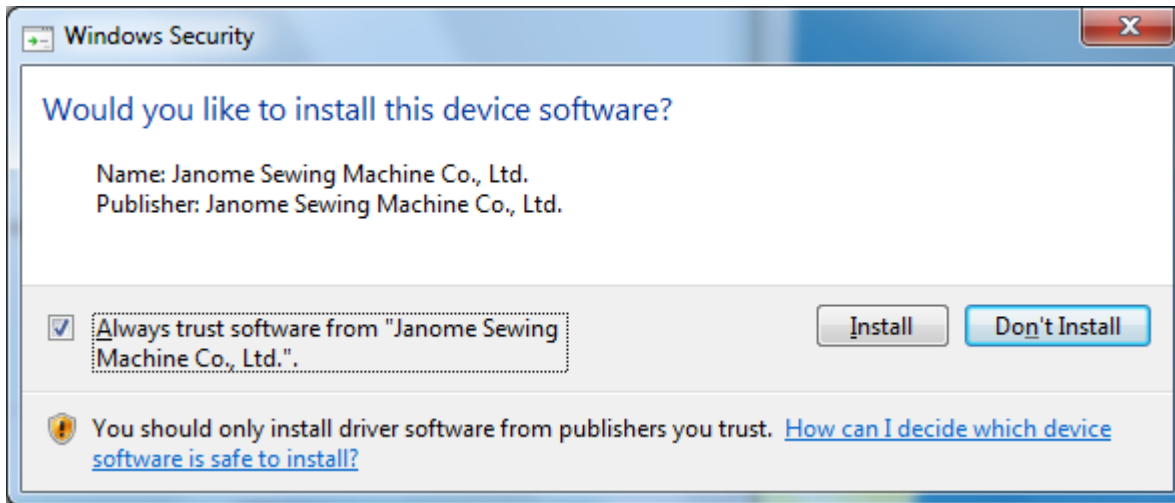
You will notice the AcuFil Print Tool, PC Folder Tool, Screen Saver Tool, and the USB Driver Installer. Please click the USB Driver Installer. You may once again get the message “Do you want to allow the following program from an unknown publisher to make changes to your computer?”, click Yes



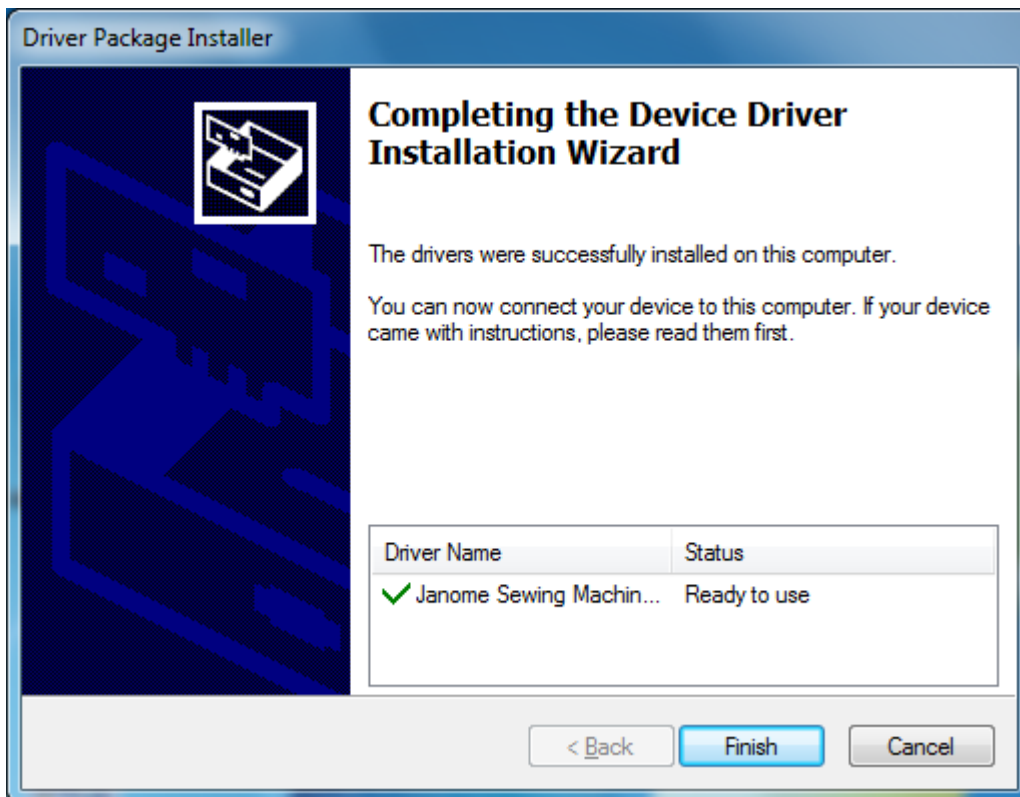
Click next....



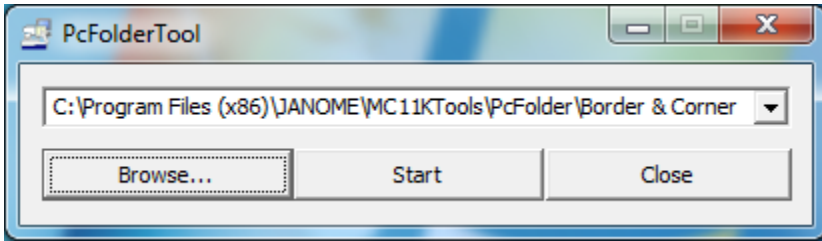
You may check the box to trust Janome software, and then click on Install shown below.



Please click "Finish".



You may now transfer a design from your PC to your MC11000/MC11000SE using Customizer, Digitizer, or PC Folder Tools.



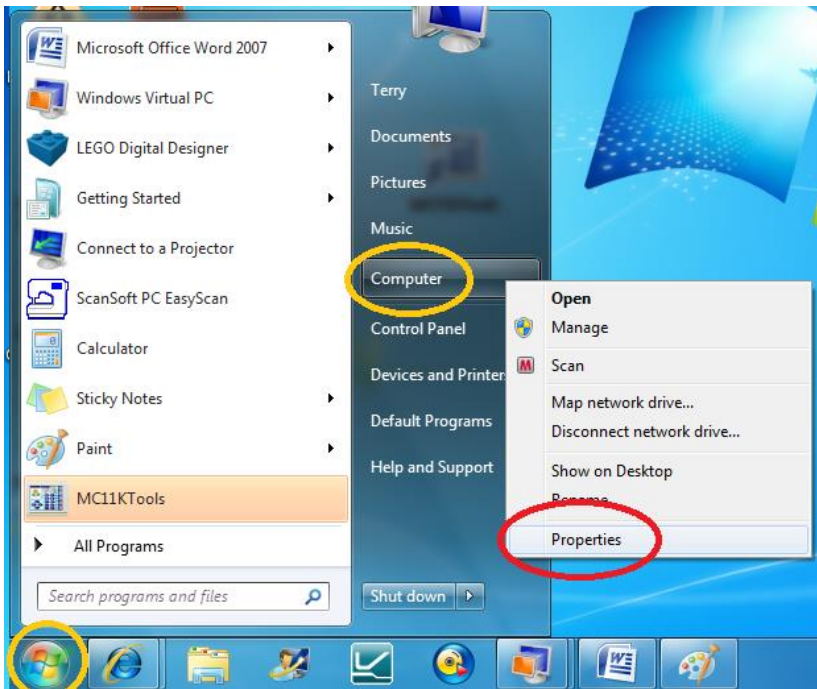
When using, **FIRST STEP** is to open PcFolderTool and browse for a folder containing .jef files, click “Start”.

SECOND STEP go over to your MC11000 and while in the Embroidery mode, choose “Open”, now touch the “PC” icon, this will allow the designs to start to transfer over to the MC11000.

If you are still receiving a message “failed to initialize communication port”, “driver has been improperly installed or damaged”, or “command error”, please follow this procedure to manually install the driver:

Disable the firewall either from Control Panel, or from your antivirus software.

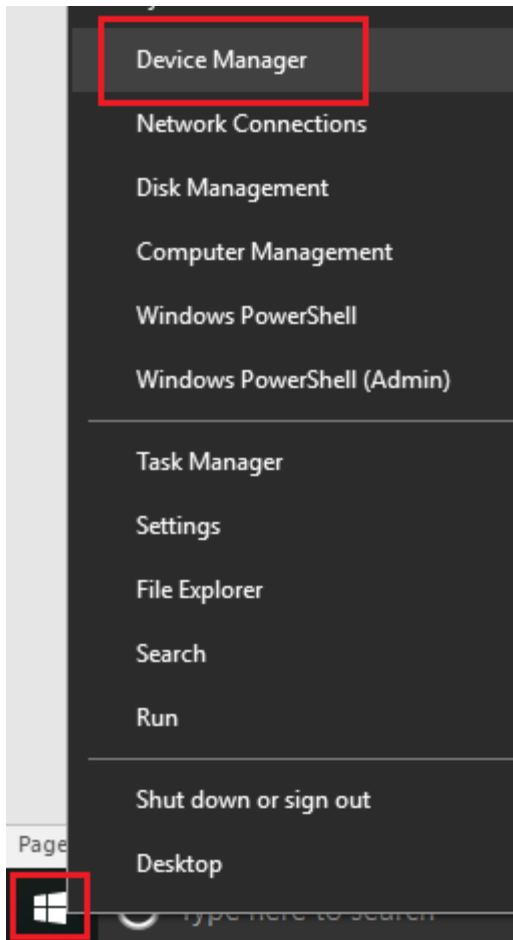
Windows 7: click on Start, right-click on Computer then choose “Properties”:



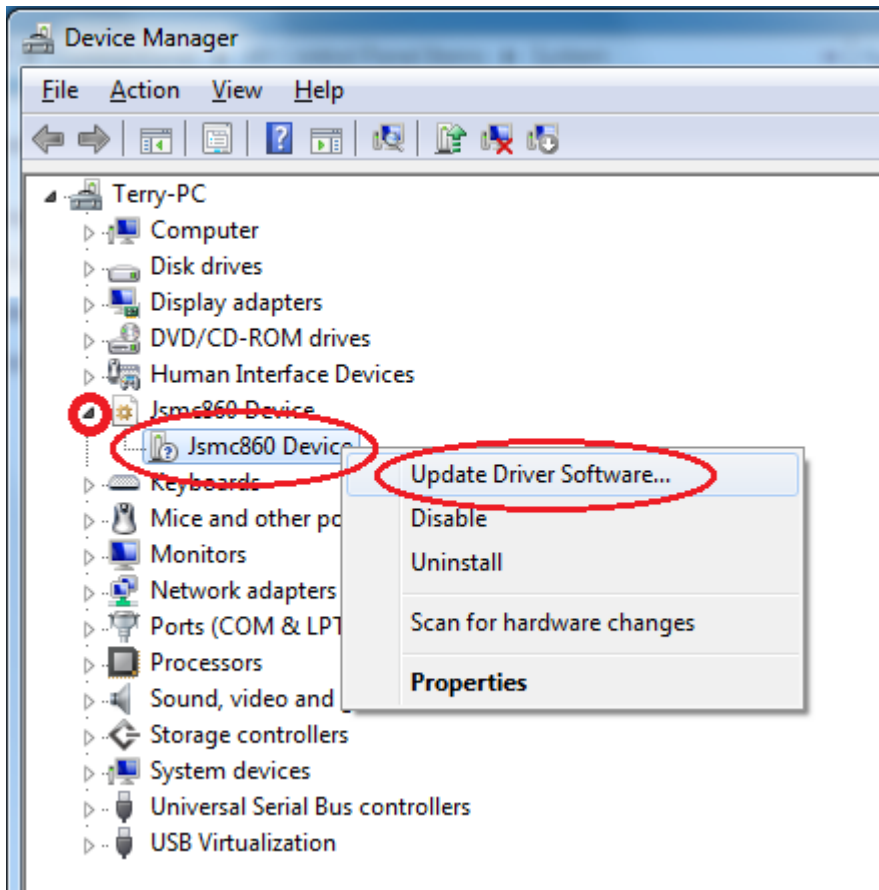
This will take you into the Properties page.

Please click on Device Manager on the upper left of the window.

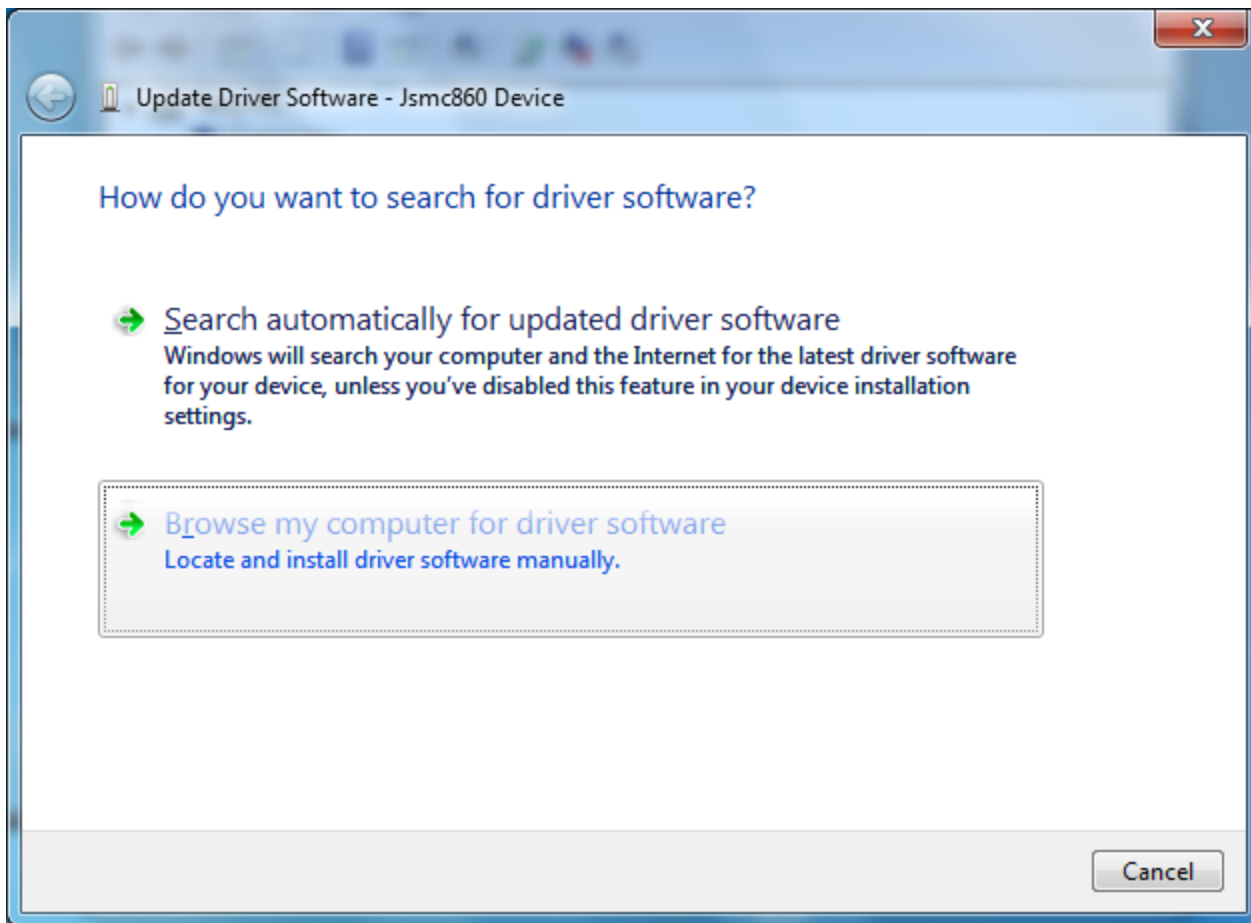
Windows 8.1/10: Right-click on the Windows logo in the bottom left corner of your screen, choose Device Manager:



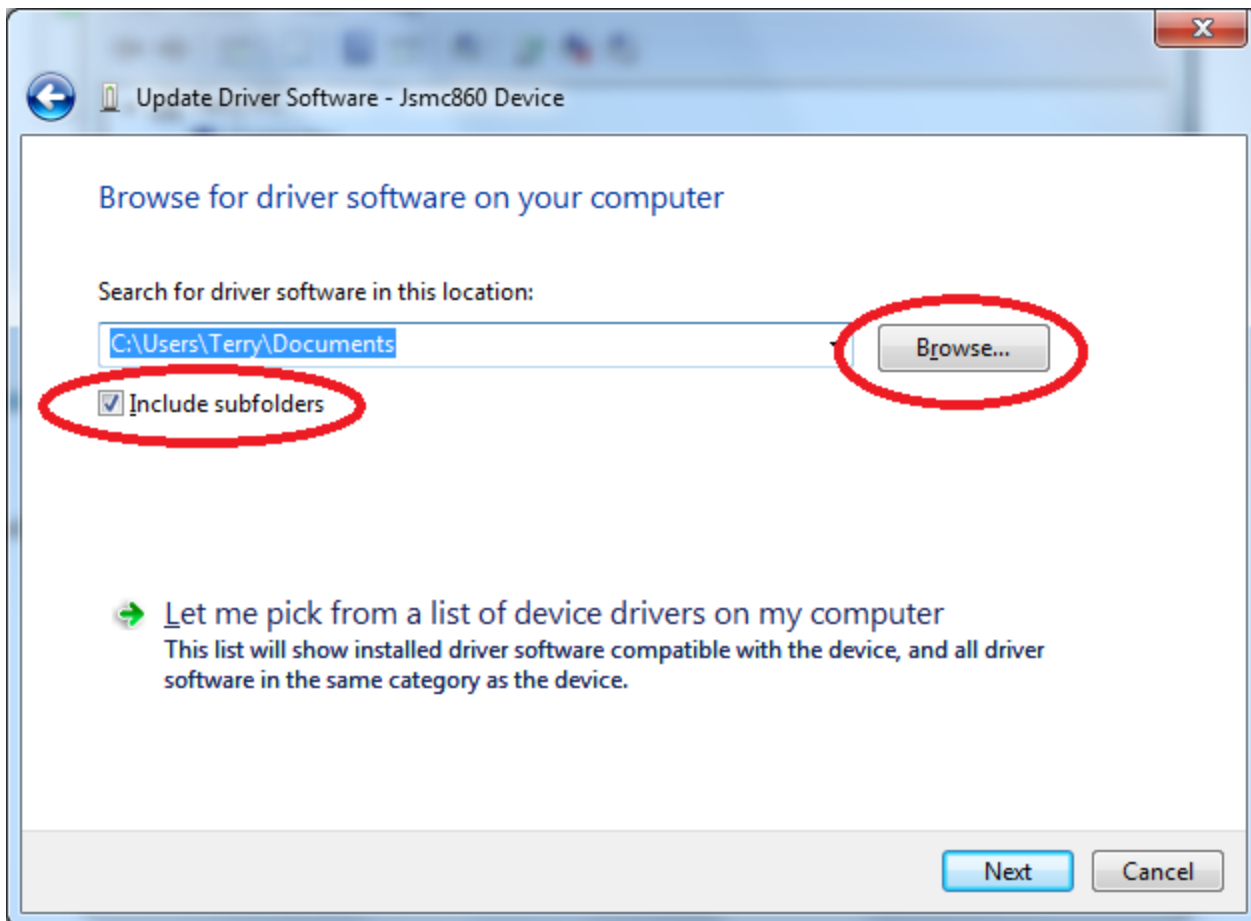
Click on the tiny arrow to the left of Jsmc860 Device to expand it as shown below, it may display either a “!” or a “?” next to the 860 device, then click on Update Driver Software



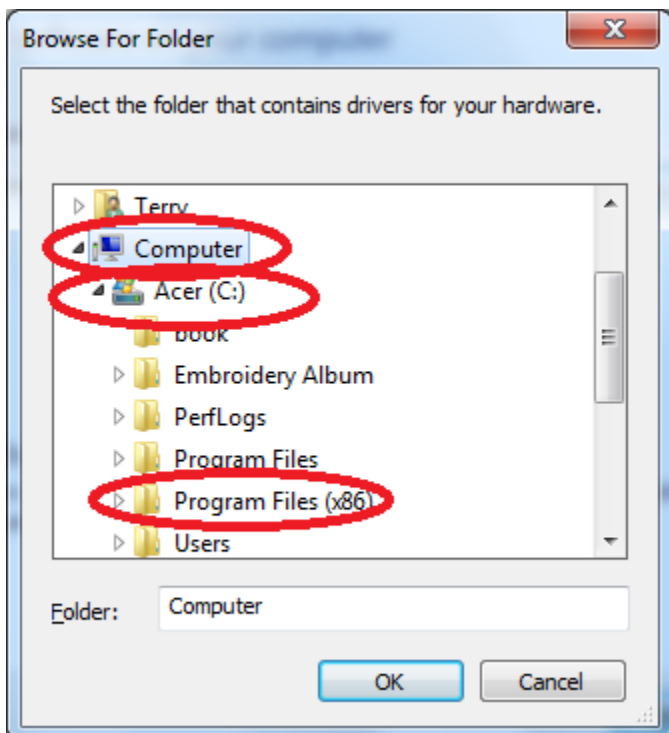
This will launch the installation wizard...please choose "Browse my computer...."



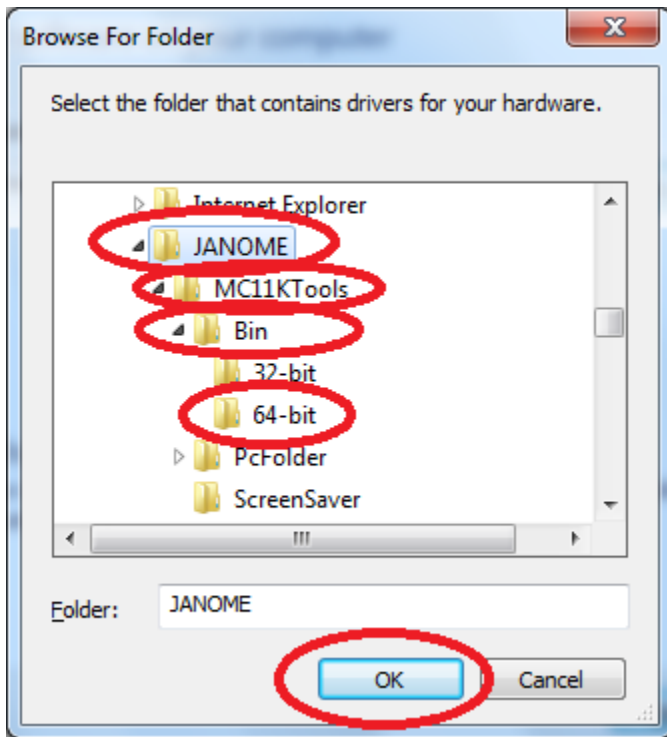
You will now be prompted to locate the driver, please click on Browse....



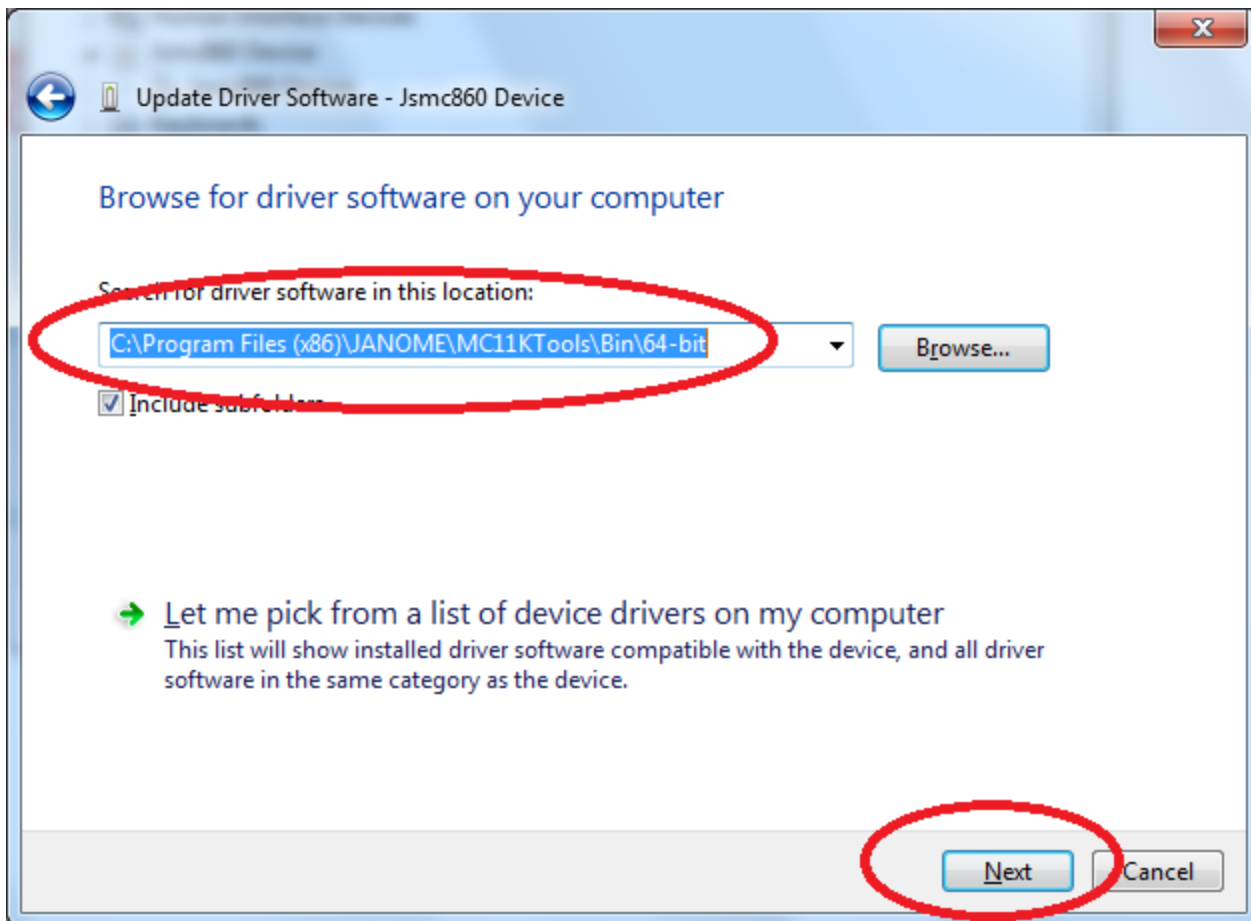
Follow the screen shots below to locate the folder where the driver is...



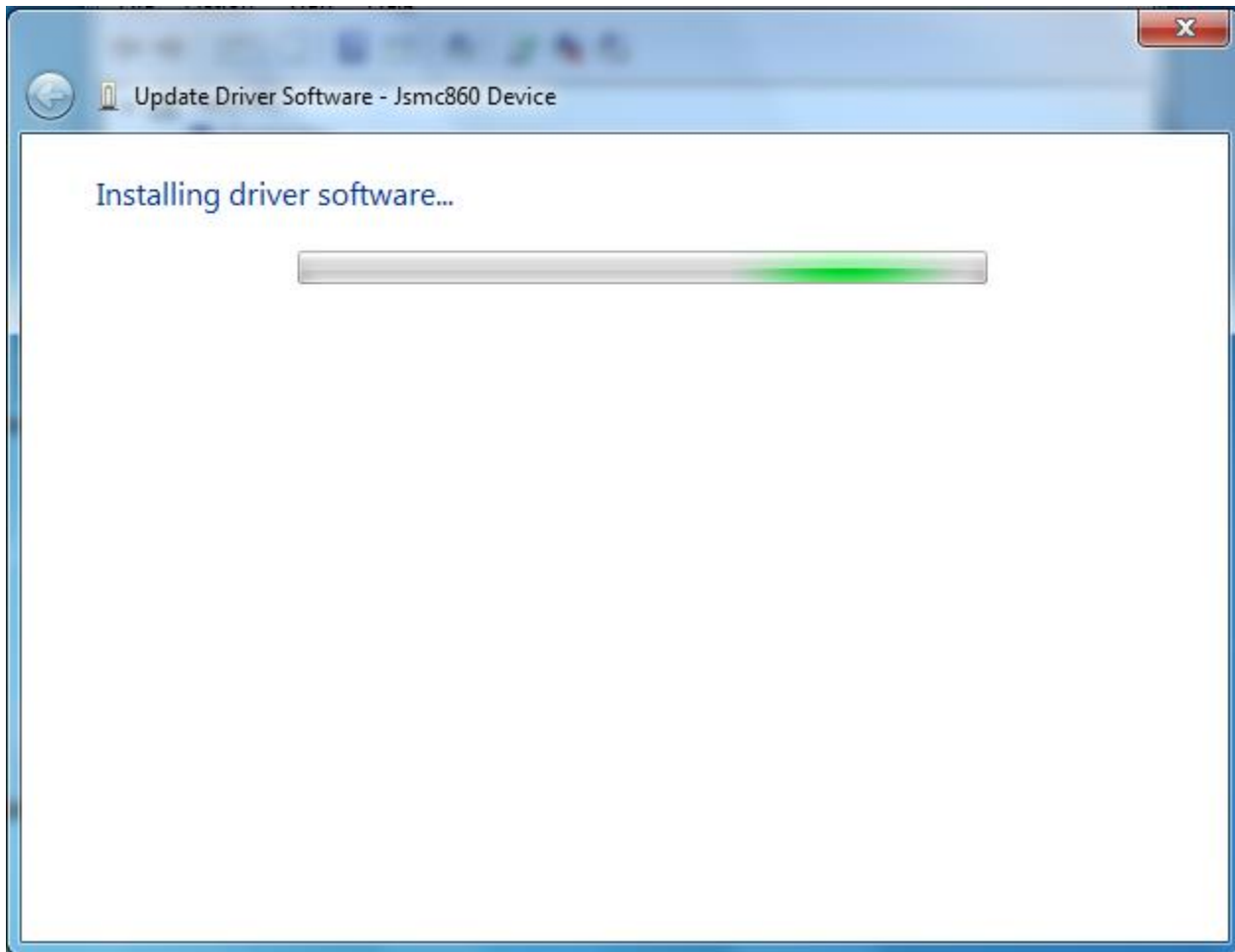
Still scrolling down in this window continue to open the Janome folder and the folders inside itOnce you have reached the 64-bit folder, click “ok”



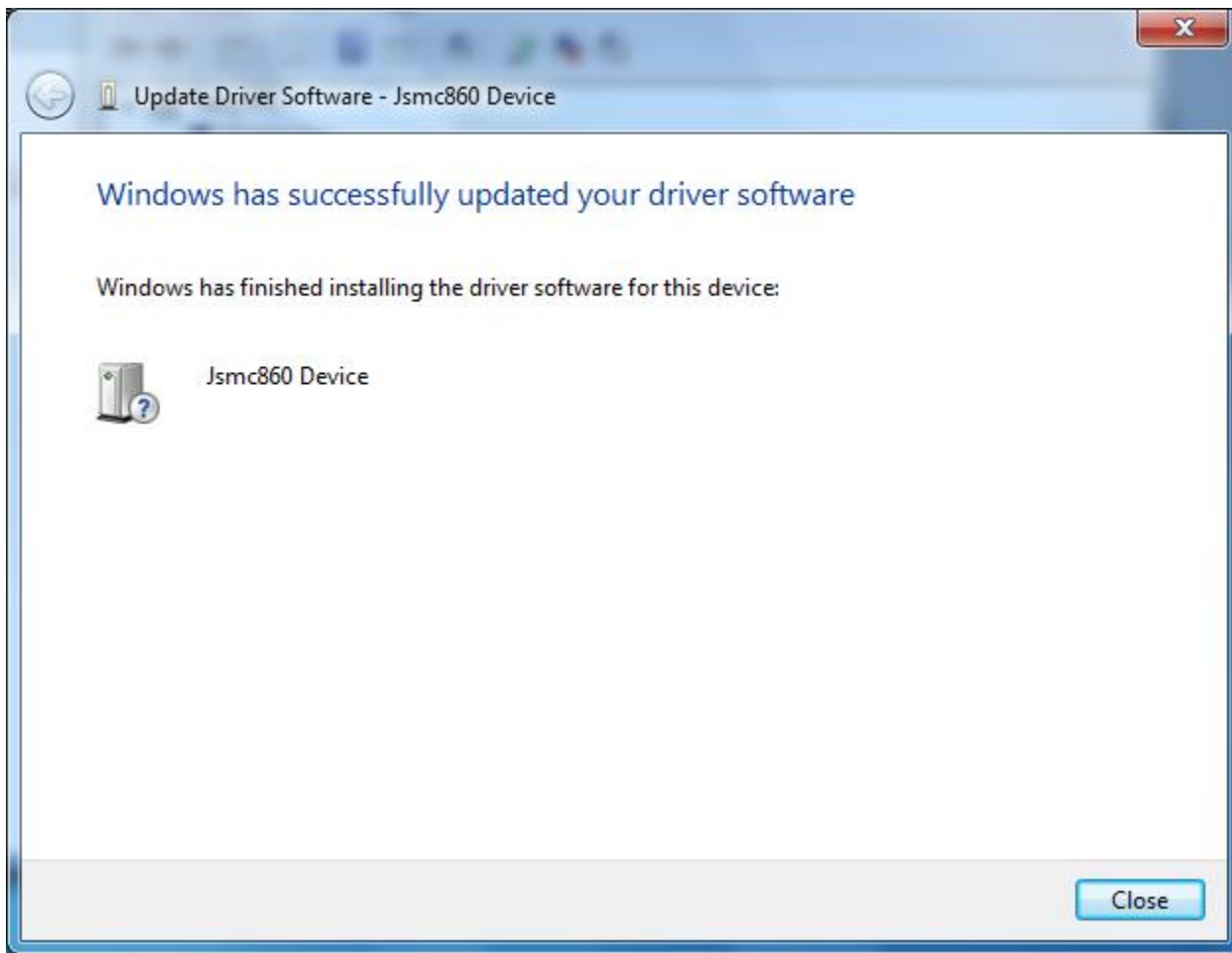
This is the proper path displayed below...click “next”



The driver will now be installed



You should see that the driver has been successfully installed.



You may now send designs to your machine from your PC Folder Tools, Customizer, or Digitizer software.

(If you are receiving a message "**check PC connection**" this means that you will need to first browse for a folder on your PC and click "start" on the PC Folder Tools **PRIOR** to touching the PC connection icon on your MC11000/MC11000SE.)