

Contour Adult Fashion Mask

Created by: Katy Mitchell, Janome Educator



This is a contour adult size “Fashion” face mask. It can be used as a general face covering to wear in public. There is a space in the mask for inserting a filter for better protection. The basic mask itself is made with 2 layers of cotton fabric and is also fused with a layer of cotton interfacing.

For a “trendier” face mask it is basically made the same way with the additional accessories added to the outside layer of the mask.

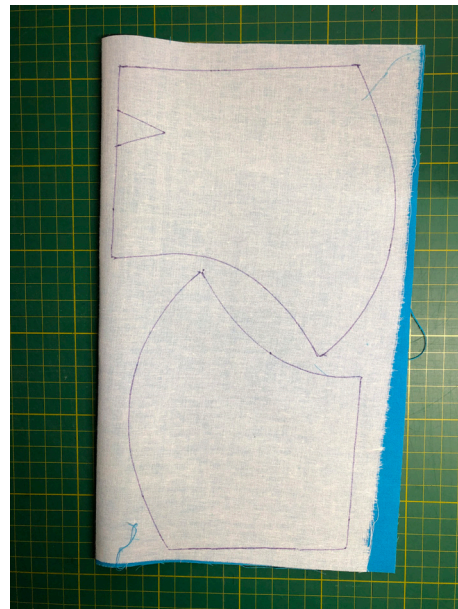
Janome Supplies:

- Pattern
- YD Main Fabric
- YD Lining Fabric
- YD Woven fusible interfacing Pellon Shape Flex 101
- YD Elastic 1/4” wide
- Sewing Thread
- Sewing machine 1/4” foot (optional)
- Ditch stitching foot (optional)

Wash and dry fabric before starting.

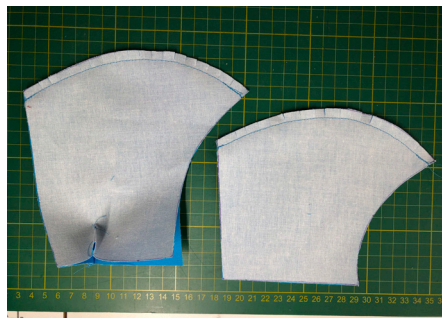
Basic Instructions:

1. Fuse interfacing to main fabric following manufacture instructions.



2. Print and cut pattern out. Cut out 2 from main fabric and 2 from lining fabric.
3. Set machine up for 1/4” sewing, and sew down front center curve, backing stitching in the beginning and end, main fabric and lining. Sew dart on main fabric piece. (optional)

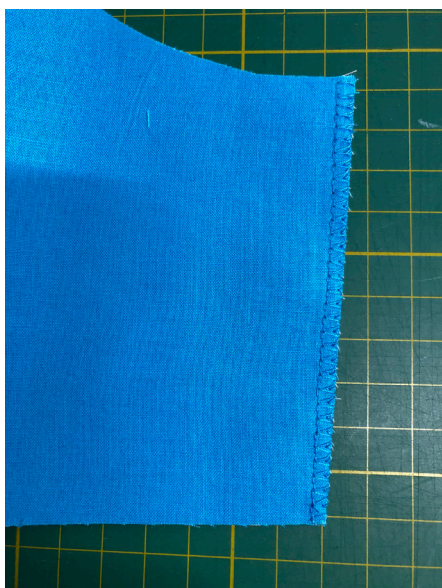
Contour Adult Fashion Mask



4. Clip Curve. Pic 2



5. Move needle position to the left as far as it will go and from the front seam. Use ditch stitching foot with the guide in the center seam, stitch down seam center seam, main fabric and lining.



6. Serge or use an overcast stitch on your machine and stitch the 2 sides of the lining fabric. As this will prevent the lining from fraying. Lining is shorter than main fabric to allow insert of filter.



7. With the right side of fabric and lining, matching the center seam stitch the top and bottom seam all the way across, turn inside out. Press seam flat.

Contour Adult Fashion Mask



8. Turn the raw edge of the two side seams in 1/4" in twice and stitch down.



9. For ear loops 6" for each piece. Pin elastic in place first and try to make sure it's not too long before sewing elastic in place.

Contour Adult Fashion Mask



Flag Style Mask

Janome Supplies:

- 3 of each 1 1/2" X 17" Red, and White Strips
- 3 of each 1 1/2" X 11 Red, and White Strips
- 1 6 1/2" X 6 1/2" Blue
- 1/4 YD Lining fabric
- 1/4 YD Woven fusible interfacing Pellon Shape Flex 101
- 1/2 YD Elastic 1/4" wide
- 1 pkg Hot Fix Stars (Stars from project are from <https://www.trimart.net/metalstud>)

Basic Instructions:

1. Fuse interfacing to fabric following manufacture instructions before cutting fabric to size indicated.
2. Sew the 1 1/2" X 17" Red to the White strips. Press to one side after sewing before going to the next.
3. Set the 6 strips to the Blue 6 1/2" right side. You are sewing this mirror imaged so that when you wear it the blue will be on the left side of the face.
4. Sew the rest of the strips together and press flat.



5. Place the pattern on top of pieced fabric and cut out each piece singularly.
6. Continue with basic instructions step 3 & 4 Omit sewing the dart.
7. Continue with step 6 to 9 of basic instructions to finish.



Quilted Dupioni Silk Mask

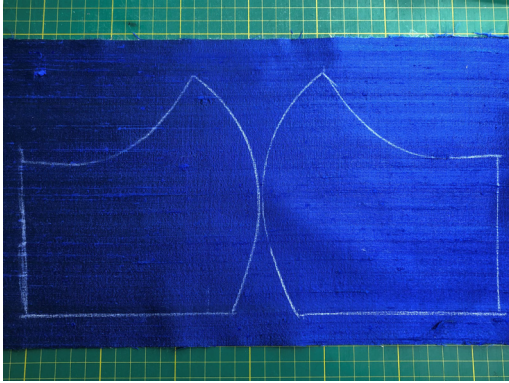
Janome Supplies:

- 1/4 YD Dupioni Silk Fabric
- 1/4 YD Cotton Lining Fabric
- 1/4 YD Fusible Armo Weft Interfacing from Pellon
- 1/4 YD Cotton Batting
- 1 Pkg Metallic Ribbon Floss from YLI (Blue Opal color used) <https://ylicorp.com/collections/ribbonfloss/products/ribbonfloss-metallic?variant=29211926429757>
- Clear Monofilament
- Narrow 2.5mm Beading foot
- Walking foot with quilting bar guide

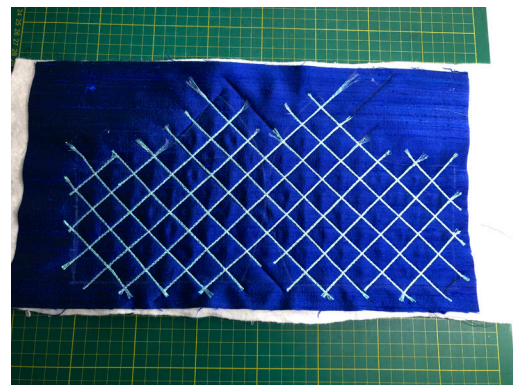
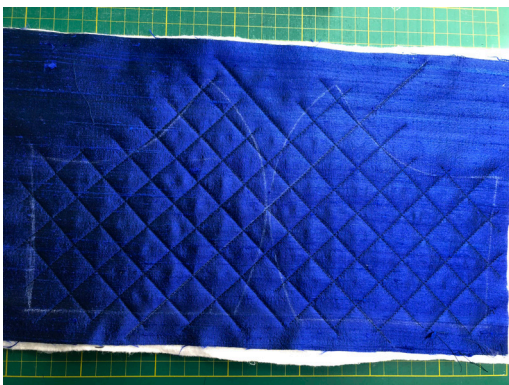
Contour Adult Fashion Mask

Basic Instructions:

1. Fuse interfacing to Silk fabric.



2. Trace pattern onto silk fabric.
3. Draw 2- 45 Degree lines in the center between the mask outline. (It will look like a X in the center between the 2 pieces.
4. Make a quilt Sandwich with lining fabric on bottom, batting and Silk.
5. Set machine up with walking foot and attach the quilting bar guide to the ankle, set to 1" from center needle position. Thread with a matching color thread.



6. Stitch on the drawn line, then use the quilting bar as a guide and quilt 1" squares.
7. Change to the beading foot, thread machine with clear monofilament. Set machine to center Zig Zag position with a 2.0 stitch width, and 2.0 stitch length. Bobbin thread should be same color as your lining fabric on the quilt sandwich.
8. Using the quilted lines as a guide, place the ribbon floss on top, lower the foot centering it on the floss, stitch the entire quilted lines. Make sure that you are stitching further than the outline of the drawn pattern.
9. Before cutting out, stitch just a hair inside the drawn outline to prevent the floss from pulling away from the stitching.
10. Go to step 3 of the Basic instructions for sewing out the rest of the mask. Omit the dart and skip Step five.

Contour Adult Fashion Mask



To make the lace version:

You can use a flat lace and gather it yourself or get pre gathered lace. For gathering lace the easiest way is to use the Gathering foot for your machine. The width is up to you.

1. Follow the basic directions steps 1-4
2. Sew lace onto mask after gathering. Spacing will depends on how wide the lace you are using.
3. Follow step 6-9 of basic instruction to finish. (yes you will skip step 5)